

METRIC

5 0 10

CONST. REV.

R/W REV.

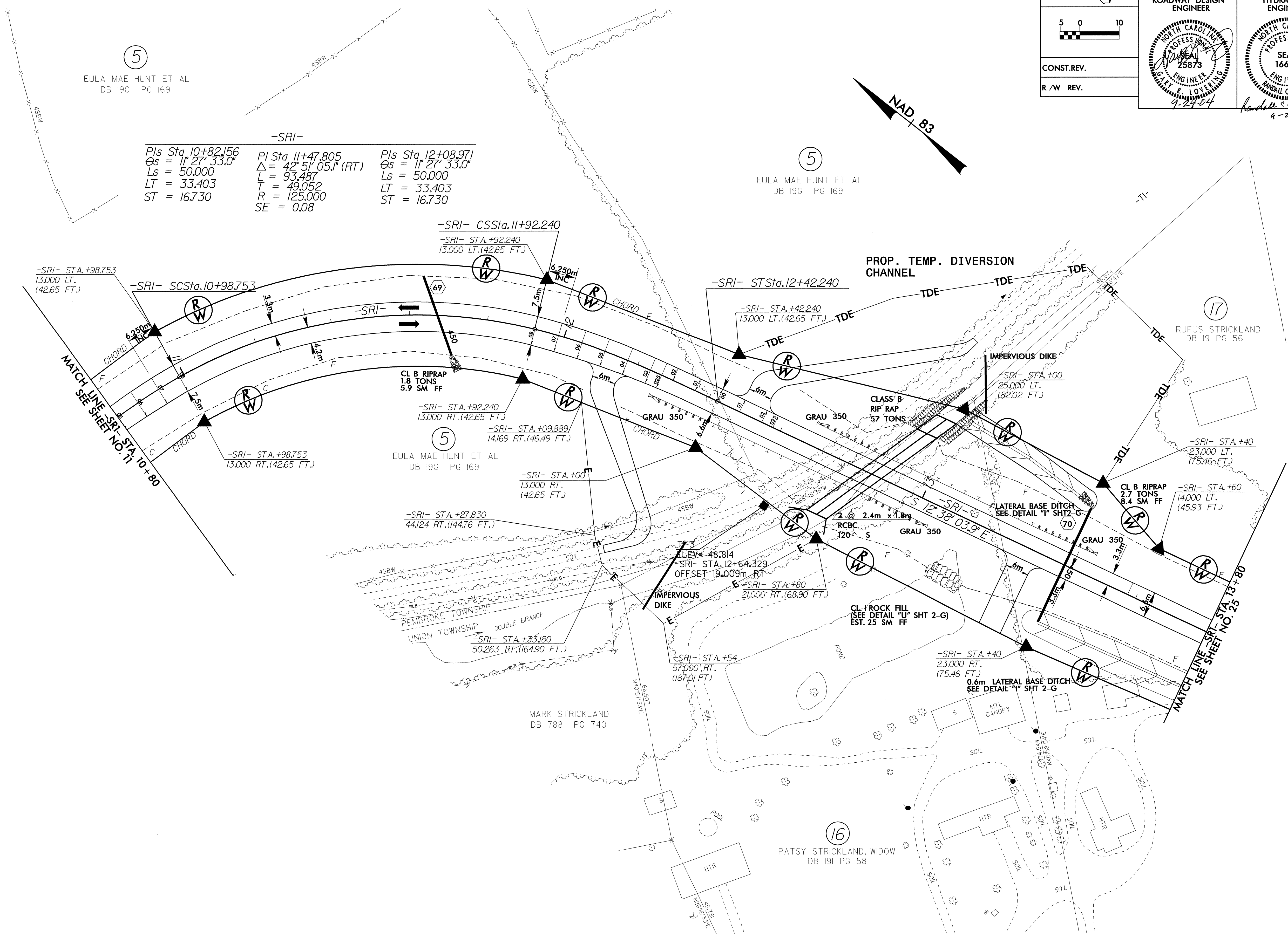
PROJECT REFERENCE NO. R-0513BA	SHEET NO. 24
R/W SHEET NO.	
ROADWAY DESIGN ENGINEER	HYDRAULICS ENGINEER
9-24-04	9-27-04

5
EULA MAE HUNT ET AL
DB 19G PG 169

5
EULA MAE HUNT ET AL
DB 19G PG 169

-SRI-

PIs Sta. 10+82.156 Cs = 11' 27" 33.0" Ls = 50.000 LT = 33.403 ST = 16.730	PI Sta. 11+47.805 Δ = 42° 51' 05.1" (RT) L = 93.487 R = 49.052 R = 125.000 SE = 0.08	PIs Sta. 12+08.971 Cs = 11' 27" 33.0" Ls = 50.000 LT = 33.403 ST = 16.730
---	---	---



NOTE: FOR PROFILE OF -SRI-, SEE SHEET NO. 42
FOR CULVERT PLANS AND DIVERSION CHANNEL PLANS
SEE SHEET C-15 TO C-19

8/17/04
 25 SEP 2004 15:48
 m:\work\0513ba\dwg\11021315.dwg
 R:\R161666.rvt