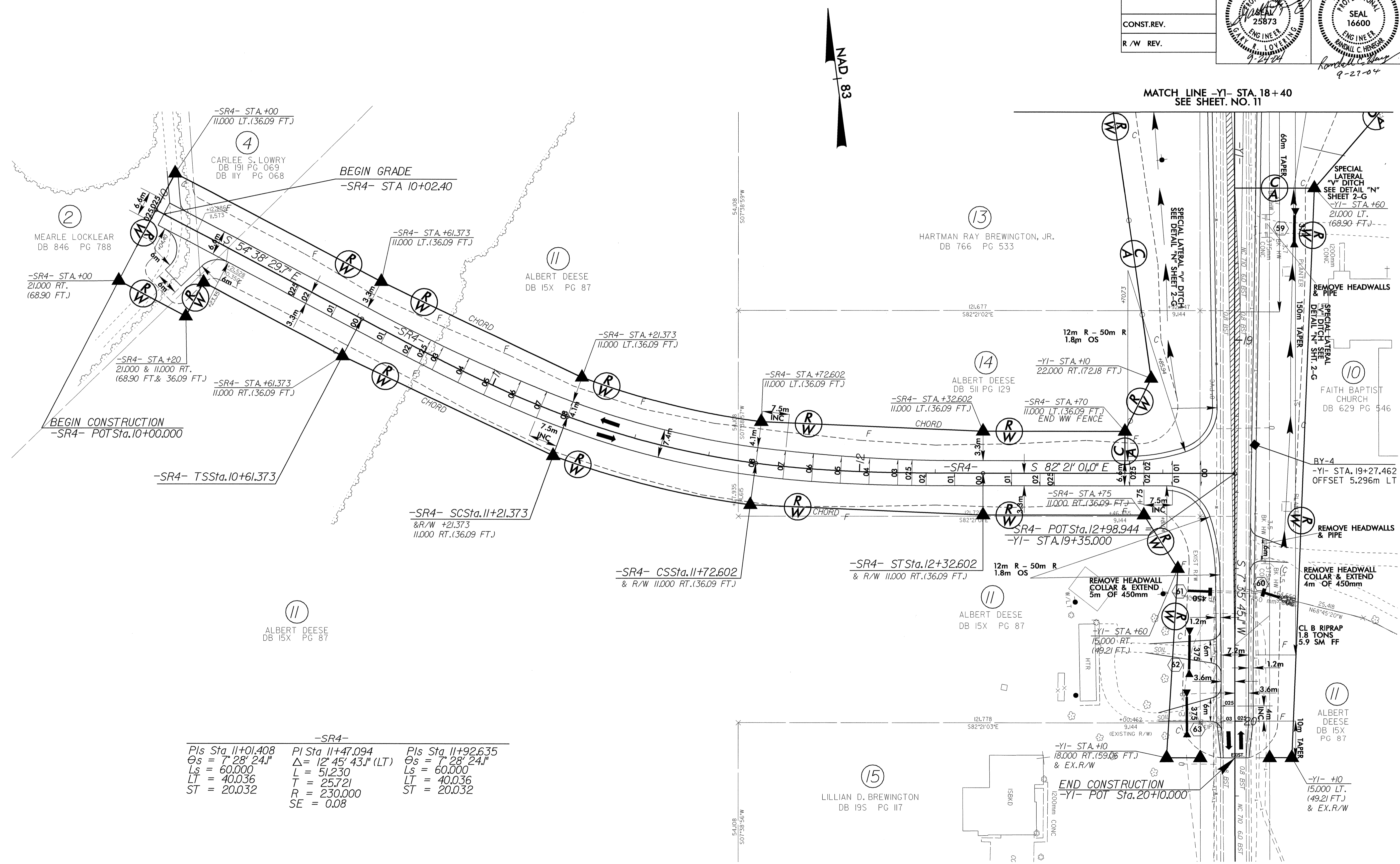


5 0 10

CONST. REV.

R/W REV.

PROJECT REFERENCE NO. R-0513BA	SHEET NO. 26
R/W SHEET NO.	
ROADWAY DESIGN ENGINEER	HYDRAULICS ENGINEER



-SR4-

PIs Sta. 11+01.408	PI Sta. 11+47.094	PIs Sta. 11+92.635
$\theta_s = 7^\circ 28' 24.11''$	$\Delta = 12^\circ 45' 43.11''$ (LT)	$\theta_s = 7^\circ 28' 24.11''$
$L_s = 60.000$	$L = 51.230$	$L_s = 60.000$
$LT = 40.036$	$T = 25.721$	$LT = 40.036$
$ST = 20.032$	$R = 230.000$	$ST = 20.032$
	$SE = 0.08$	

NOTE: FOR PROFILE OF -SR4-, SEE SHEET NO. 47
 FOR PROFILE OF -YI-, SEE SHEET NO. 37 & NO. 38

8/17/99
 20-SEP-2004 13:39
 R:\0513BA\DWG\26.dwg
 R:\0513BA\DWG\26.dwg