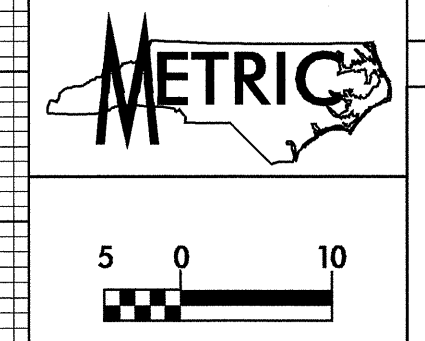


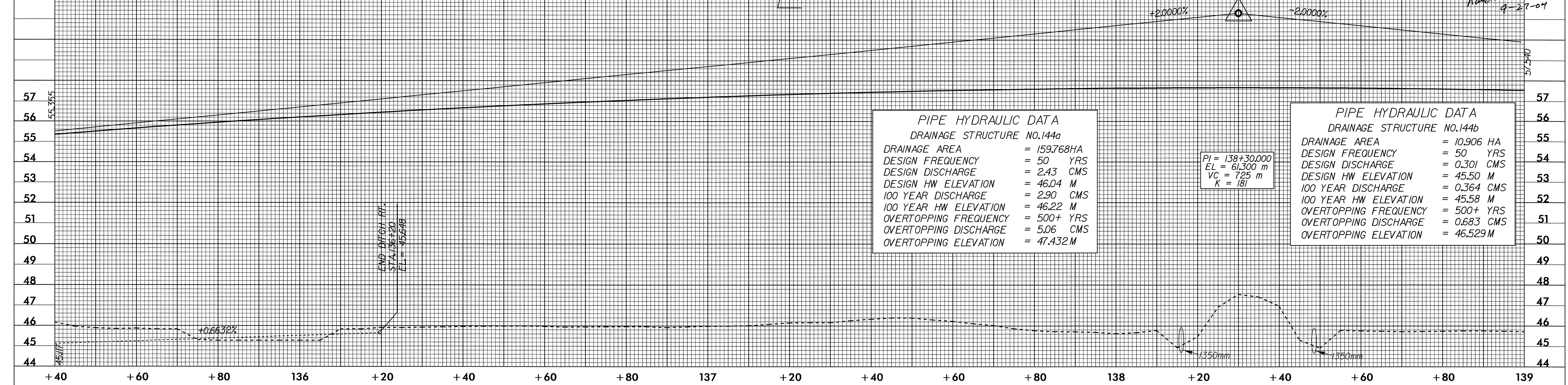
6.09/99

DITCH LEGEND  
RIGHT DITCH - - - - -



|                                   |                     |
|-----------------------------------|---------------------|
| PROJECT REFERENCE NO.<br>R-0513BA | SHEET NO.<br>34     |
| ROADWAY DESIGN ENGINEER           | HYDRAULICS ENGINEER |
|                                   |                     |
| CONST. REV.                       | R/W REV.            |

BM\*10 RR SPIKE IN BASE OF 450MM PINE  
-L- STA.137+99.685 142.679M LT  
N 98078.922 E 588788.132 EL = 45.887

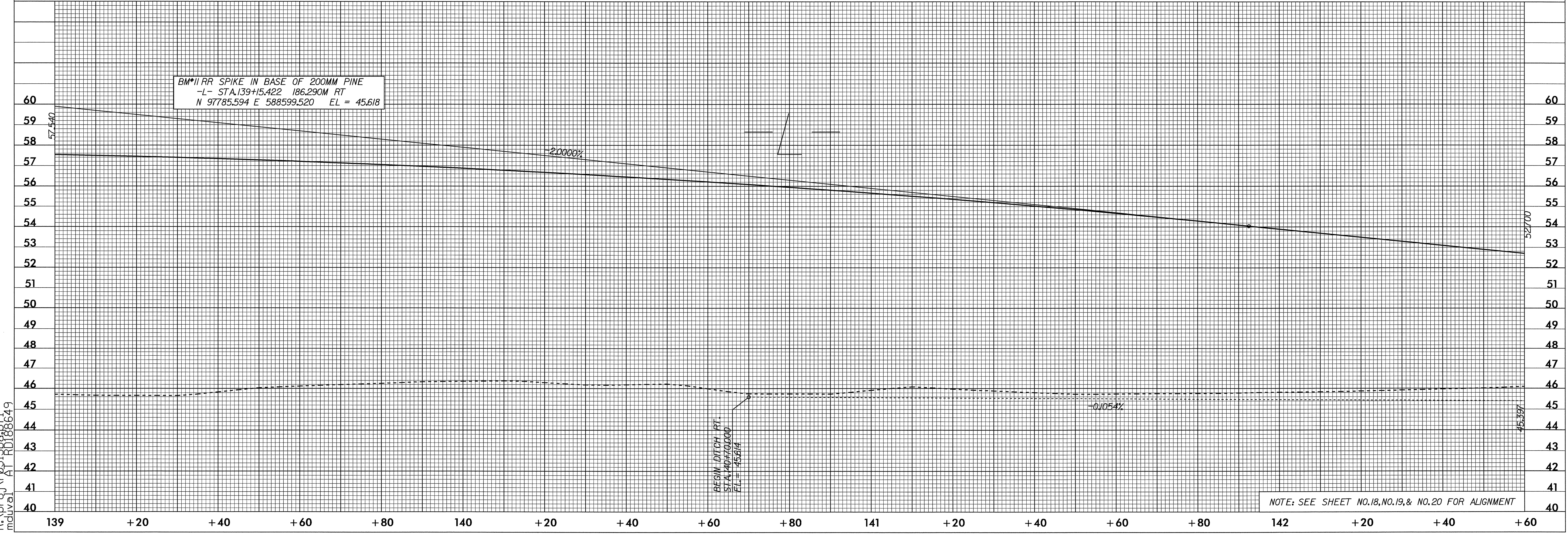


PIPE HYDRAULIC DATA  
DRAINAGE STRUCTURE NO.144a

|                       |             |
|-----------------------|-------------|
| DRAINAGE AREA         | = 159.768HA |
| DESIGN FREQUENCY      | = 50 YRS    |
| DESIGN DISCHARGE      | = 2.43 CMS  |
| DESIGN HW ELEVATION   | = 46.04 M   |
| 100 YEAR DISCHARGE    | = 2.90 CMS  |
| 100 YEAR HW ELEVATION | = 46.22 M   |
| OVERTOPPING FREQUENCY | = 500+ YRS  |
| OVERTOPPING DISCHARGE | = 5.06 CMS  |
| OVERTOPPING ELEVATION | = 47.432 M  |

PIPE HYDRAULIC DATA  
DRAINAGE STRUCTURE NO.144b

|                       |             |
|-----------------------|-------------|
| DRAINAGE AREA         | = 10.906 HA |
| DESIGN FREQUENCY      | = 50 YRS    |
| DESIGN DISCHARGE      | = 0.301 CMS |
| DESIGN HW ELEVATION   | = 45.50 M   |
| 100 YEAR DISCHARGE    | = 0.364 CMS |
| 100 YEAR HW ELEVATION | = 45.58 M   |
| OVERTOPPING FREQUENCY | = 500+ YRS  |
| OVERTOPPING DISCHARGE | = 0.683 CMS |
| OVERTOPPING ELEVATION | = 46.529 M  |



BM\*11 RR SPIKE IN BASE OF 200MM PINE  
-L- STA.139+15.422 186.290M RT  
N 97785.594 E 588599.520 EL = 45.618

BEGIN DITCH RT.  
STA.140+70.000  
EL = 45.614

NOTE: SEE SHEET NO.18, NO.19, & NO.20 FOR ALIGNMENT

20-SEP-2004 13:34  
R:\proj\051388641  
modval AT RD188649