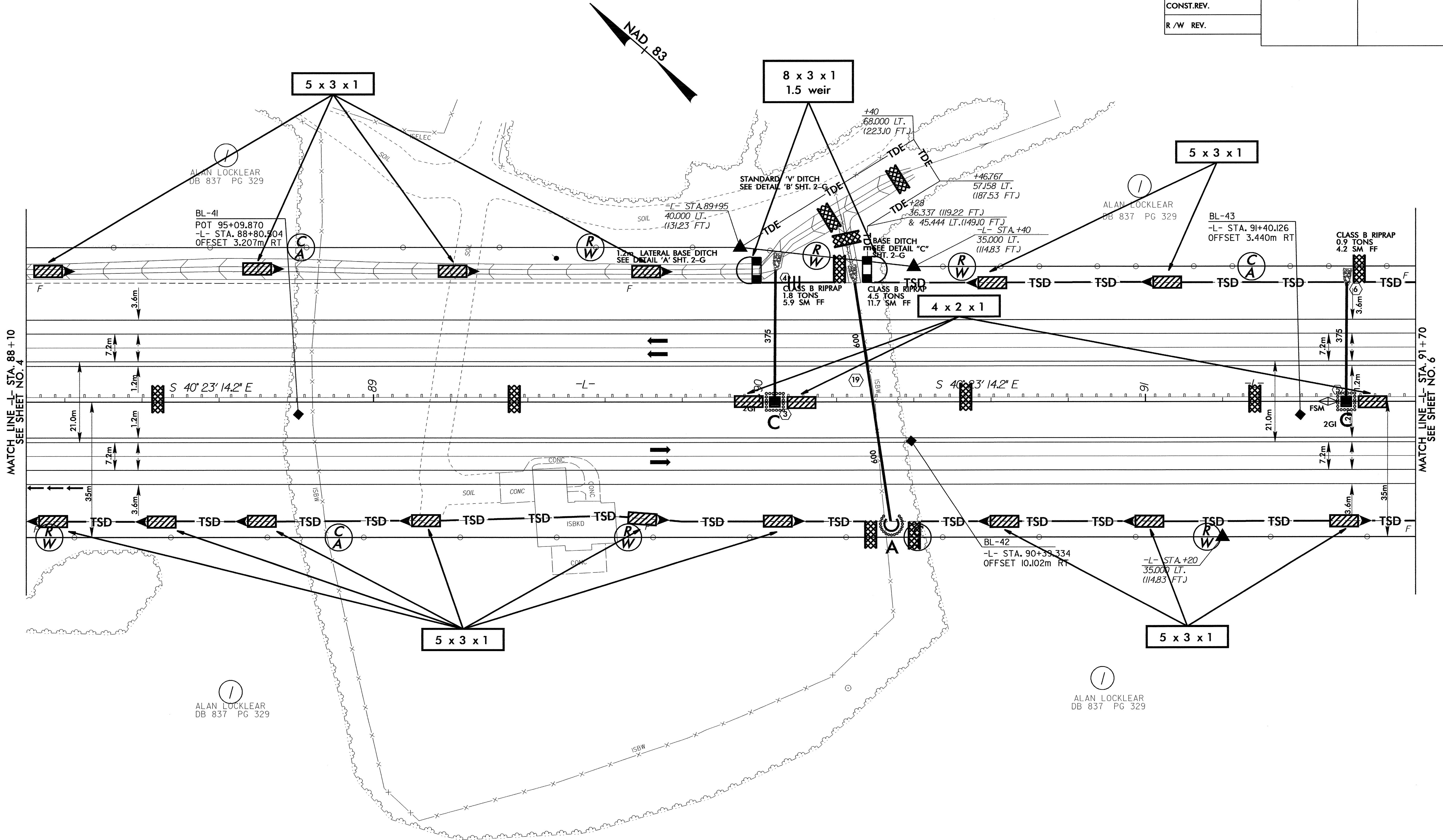
 CONST. REV.	PROJECT REFERENCE NO.	SHEET NO.
	R-05/3BA	EC-30/CONST.5
	R/W SHEET NO.	
ROADWAY DESIGN ENGINEER	HYDRAULICS ENGINEER	
R/W REV.		

8/17/93
 REVISIONS
 BL-41
 POT 95+09.870
 -L- STA. 88+80.504
 OFFSET 3.207m RT
 ALAN LOCKLEAR
 DB 837 PG 329
 BL-42
 -L- STA. 90+33.334
 OFFSET 10.102m RT
 ALAN LOCKLEAR
 DB 837 PG 329
 BL-43
 -L- STA. 91+40.126
 OFFSET 3.440m RT
 ALAN LOCKLEAR
 DB 837 PG 329
 CLASS B RIPRAP
 0.9 TONS
 4.2 SM FF
 CLASS B RIPRAP
 1.8 TONS
 5.9 SM FF
 CLASS B RIPRAP
 4.5 TONS
 11.7 SM FF
 CLASS B RIPRAP
 0.9 TONS
 4.2 SM FF



NOTE: FOR PROFILE OF -L-, SEE SHEET NO. 27