

UTILITIES BY OTHERS

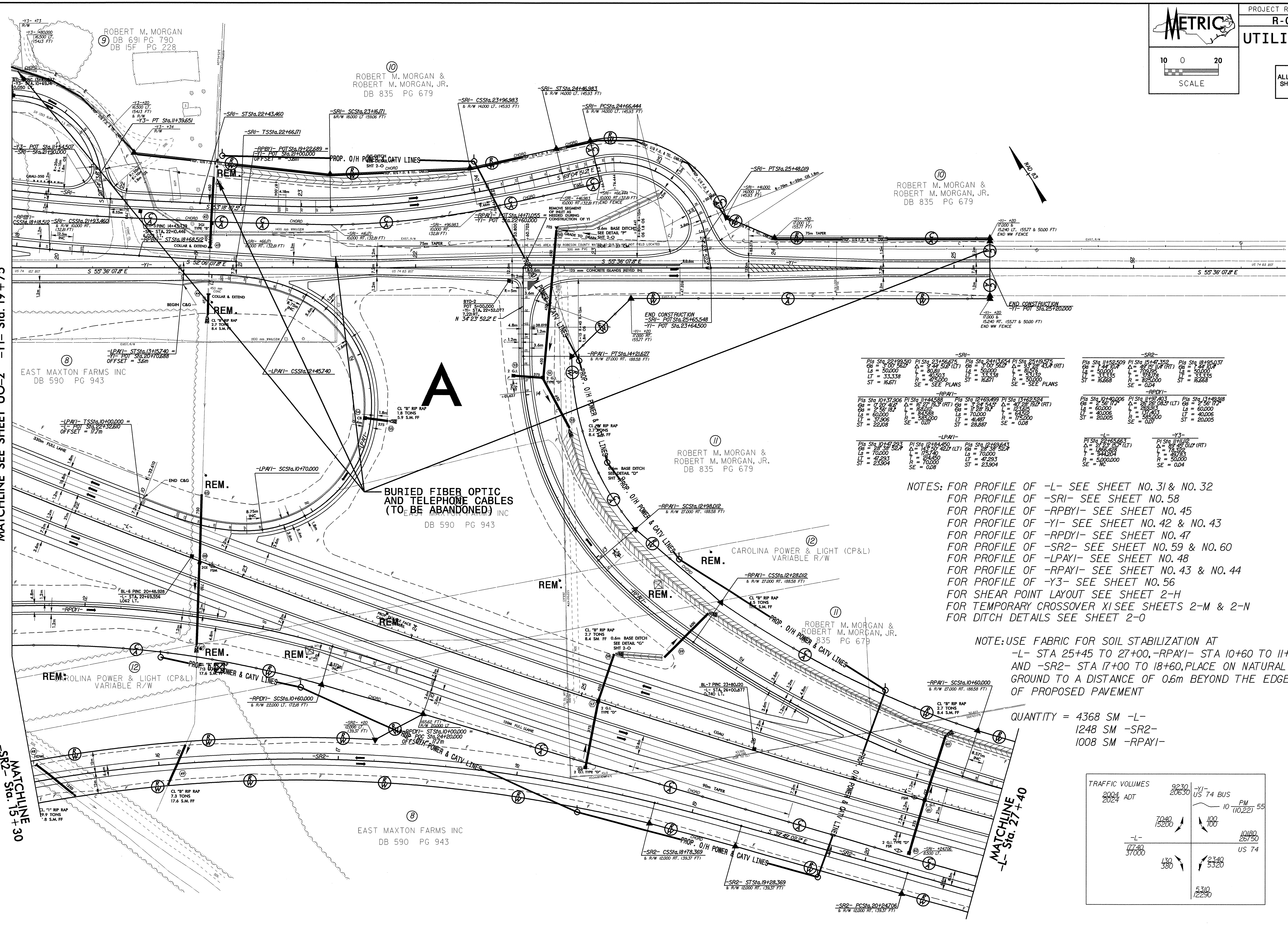
NOTE: ALL PROPOSED UTILITY WORK SHOWN ON THIS SHEET WILL BE DONE BY OTHERS

042597
21 JUL 2004 10:43 AM UO-3.dwg
sgodaba

MATCHLINE SEE SHEET UO-2 -Y1- Sta. 19 + 75

MATCHLINE -SR2- Sta. 15 + 30

MATCHLINE -L- Sta. 27 + 40

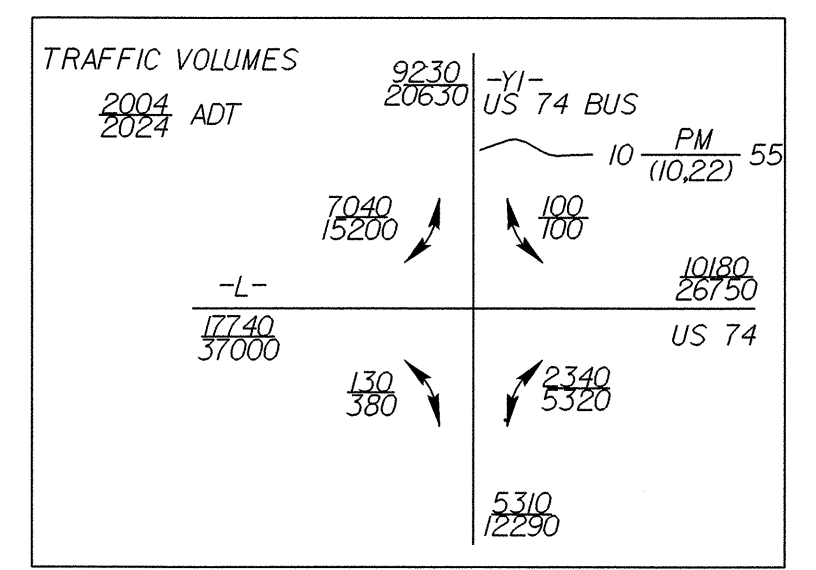


-SRI- Pile Sta. 22+99.50 Gs = 3.00' 56.0" Ls = 50.000' LT = 33.338' ST = 16.671' SE = SEE PLANS	-SRI- Pile Sta. 24+13.654 Gs = 3.00' 56.0" Ls = 50.000' LT = 33.338' ST = 16.671' SE = SEE PLANS	-SRI- Pile Sta. 25+18.575 Gs = 3.00' 56.0" Ls = 50.000' LT = 33.338' ST = 16.671' SE = SEE PLANS	-SR2- Pile Sta. 17+52.509 Gs = 1.44' 10.7" Ls = 50.000' LT = 33.338' ST = 16.668' SE = 0.04	-SR2- Pile Sta. 18+59.037 Gs = 1.44' 10.7" Ls = 50.000' LT = 33.338' ST = 16.668' SE = 0.04
-RPDI- Pile Sta. 10+137.906 Gs = 0.20' 4.6" Ls = 60.000' LT = 37.906' ST = 22.028' SE = 0.07	-RPDI- Pile Sta. 11+44.588 Gs = 0.20' 4.6" Ls = 60.000' LT = 37.906' ST = 22.028' SE = 0.07	-RPDI- Pile Sta. 12+69.499 Gs = 0.20' 4.6" Ls = 60.000' LT = 37.906' ST = 22.028' SE = 0.07	-RPDI- Pile Sta. 13+82.524 Gs = 0.20' 4.6" Ls = 60.000' LT = 37.906' ST = 22.028' SE = 0.07	-RPDI- Pile Sta. 14+97.403 Gs = 0.20' 4.6" Ls = 60.000' LT = 37.906' ST = 22.028' SE = 0.07
-LPAYI- Pile Sta. 10+147.293 Gs = 0.20' 4.6" Ls = 70.000' LT = 31.293' ST = 23.504' SE = 0.08	-LPAYI- Pile Sta. 12+84.450 Gs = 0.20' 4.6" Ls = 70.000' LT = 31.293' ST = 23.504' SE = 0.08	-LPAYI- Pile Sta. 12+89.643 Gs = 0.20' 4.6" Ls = 70.000' LT = 31.293' ST = 23.504' SE = 0.08	-Y3- Pile Sta. 22+165.663 Gs = 2.53' 7.7" Ls = 136.669' T = 944.264' R = 5,000.000' SE = WC	-Y3- Pile Sta. 11+112 Gs = 8.71' 26.7" Ls = 70.000' T = 287.83' R = 50,000' SE = 0.04

NOTES: FOR PROFILE OF -L- SEE SHEET NO. 31 & NO. 32
 FOR PROFILE OF -SRI- SEE SHEET NO. 58
 FOR PROFILE OF -RPYI- SEE SHEET NO. 45
 FOR PROFILE OF -YI- SEE SHEET NO. 42 & NO. 43
 FOR PROFILE OF -RPDI- SEE SHEET NO. 47
 FOR PROFILE OF -SR2- SEE SHEET NO. 59 & NO. 60
 FOR PROFILE OF -LPAYI- SEE SHEET NO. 48
 FOR PROFILE OF -RPAYI- SEE SHEET NO. 43 & NO. 44
 FOR PROFILE OF -Y3- SEE SHEET NO. 56
 FOR SHEAR POINT LAYOUT SEE SHEET 2-H
 FOR TEMPORARY CROSSOVER X SEE SHEETS 2-M & 2-N
 FOR DITCH DETAILS SEE SHEET 2-O

NOTE: USE FABRIC FOR SOIL STABILIZATION AT
 -L- STA 25+45 TO 27+00, -RPAYI- STA 10+60 TO 11+80
 AND -SR2- STA 17+00 TO 18+60, PLACE ON NATURAL
 GROUND TO A DISTANCE OF 0.6m BEYOND THE EDGE
 OF PROPOSED PAVEMENT

QUANTITY = 4368 SM -L-
 1248 SM -SR2-
 1008 SM -RPAYI-



21 JUL 2004 10:43 AM UO-3.dwg
sgodaba