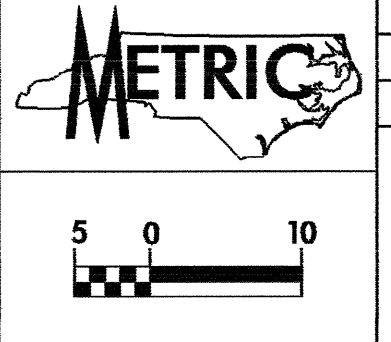


8/17/99

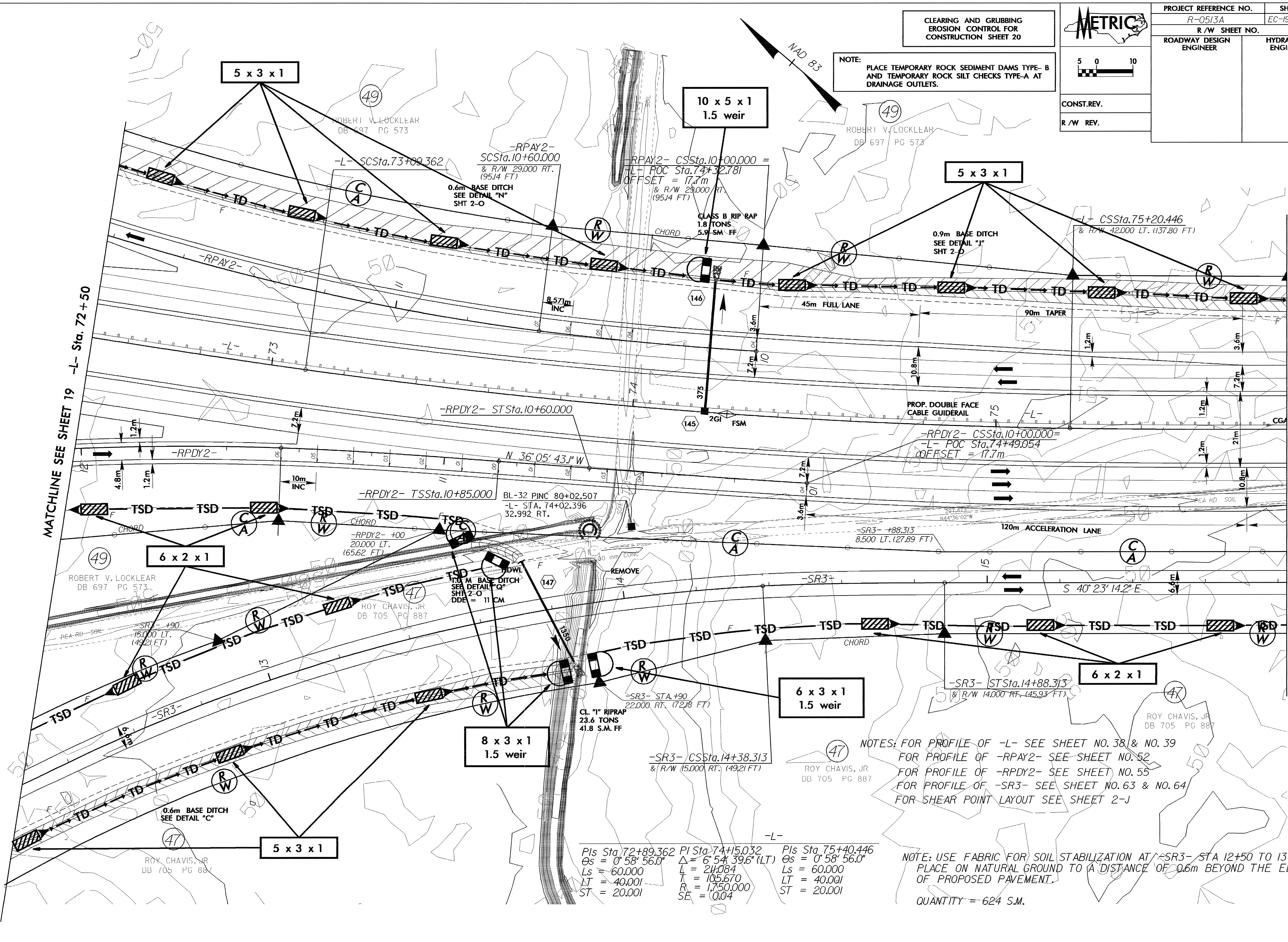
m/angsch AT

CLEARING AND GRUBBING  
EROSION CONTROL FOR  
CONSTRUCTION SHEET 20



PROJECT REFERENCE NO. R-0513A	SHEET NO. EC-19/CONST.20
R/W SHEET NO.	HYDRAULICS ENGINEER
ROADWAY DESIGN ENGINEER	
CONST. REV.	
R/W REV.	

NOTE:  
PLACE TEMPORARY ROCK SEDIMENT DAMS TYPE-B  
AND TEMPORARY ROCK SILT CHECKS TYPE-A AT  
DRAINAGE OUTLETS.



MATCHLINE SEE SHEET 19 -L- Sta. 72+50

MATCHLINE SEE SHEET 21 -L- Sta. 75+80

Pls Sta. 72+89.362 θs = 0° 58' 56.0" Ls = 60.000 LT = 40.001 ST = 20.001	Pls Sta. 74+15.032 Δ = 6° 54' 39.6" (LT) L = 211.084 T = 105.670 R = 1,750.000 SE = 0.04	Pls Sta. 75+40.446 θs = 0° 58' 56.0" Ls = 60.000 LT = 40.001 ST = 20.001
--------------------------------------------------------------------------------------	---------------------------------------------------------------------------------------------------------	--------------------------------------------------------------------------------------

NOTES: FOR PROFILE OF -L- SEE SHEET NO. 38 & NO. 39  
 FOR PROFILE OF -RPAY2- SEE SHEET NO. 52  
 FOR PROFILE OF -RPDY2- SEE SHEET NO. 55  
 FOR PROFILE OF -SR3- SEE SHEET NO. 63 & NO. 64  
 FOR SHEAR POINT LAYOUT SEE SHEET 2-J

NOTE: USE FABRIC FOR SOIL STABILIZATION AT -SR3- STA 12+50 TO 13+30,  
 PLACE ON NATURAL GROUND TO A DISTANCE OF 0.6m BEYOND THE EDGE  
 OF PROPOSED PAVEMENT.  
 QUANTITY = 624 S.M.