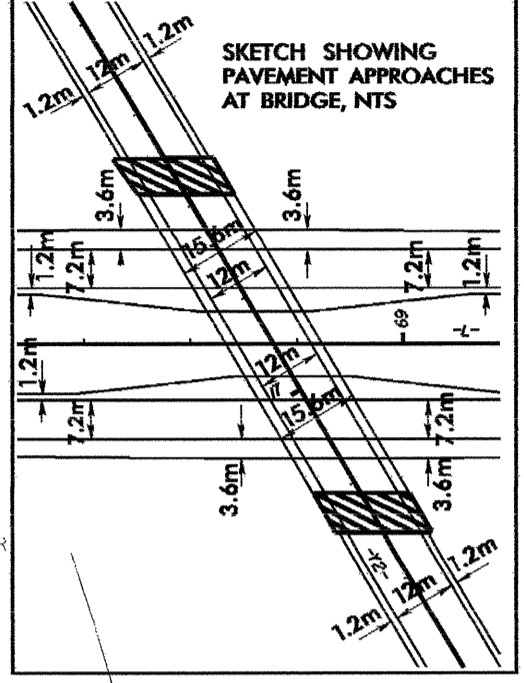
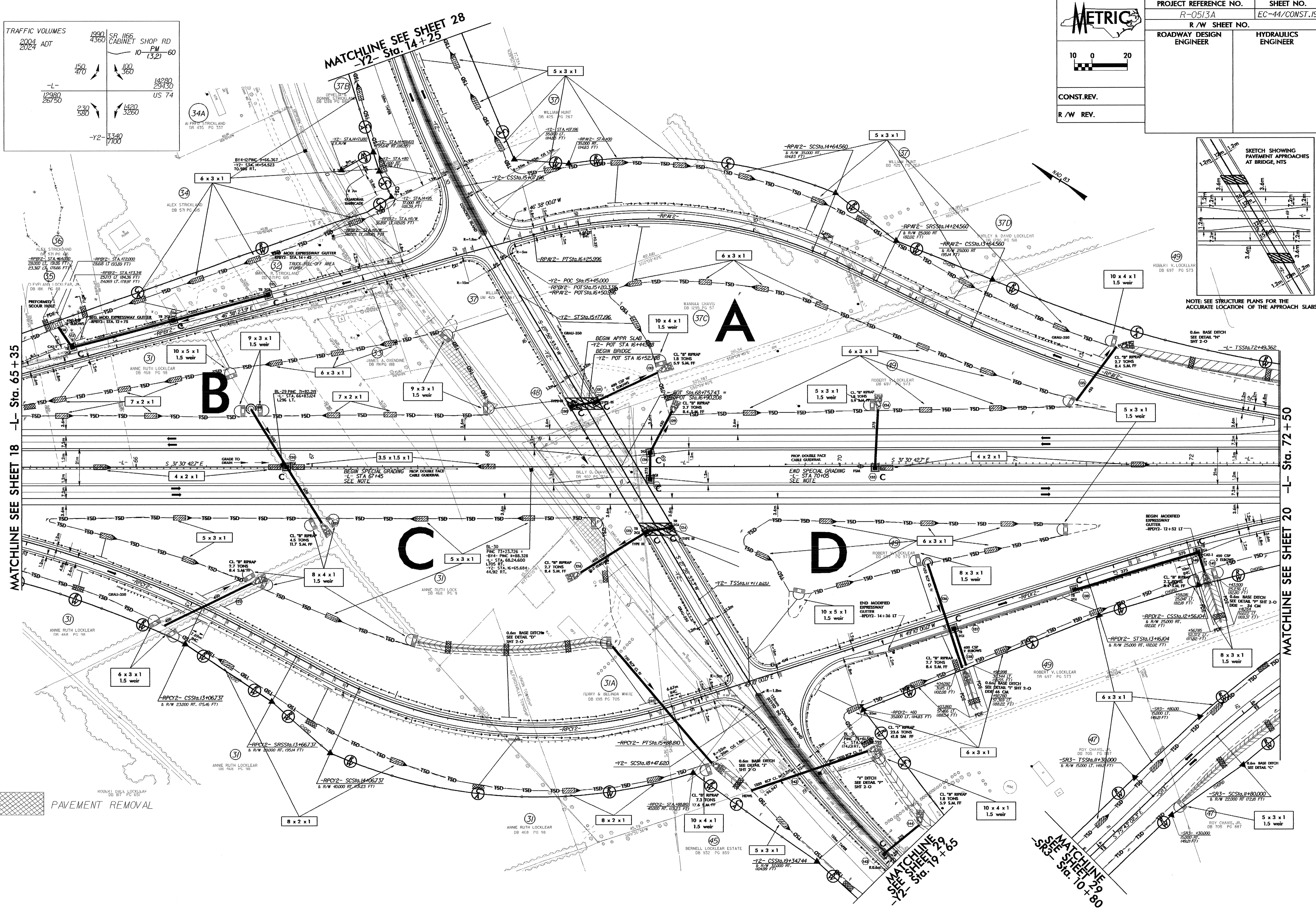


TRAFFIC VOLUMES	
1990 ADT	1990 PM
4360	360
SR 1166	SR 1166
CABINET SHOP RD	CABINET SHOP RD
10 (3.2) - 60	10 (3.2) - 60
14280	1420
25430	3260
US 74	US 74
12980	26750
230	580
-Y2	-3340
	1700

METRIC

CONST. REV.
R/W REV.

PROJECT REFERENCE NO. R-0513A	SHEET NO. EC-44/CONST.19
R/W SHEET NO.	HYDRAULICS ENGINEER
ROADWAY DESIGN ENGINEER	



NOTE: SEE STRUCTURE PLANS FOR THE ACCURATE LOCATION OF THE APPROACH SLABS.

PAVEMENT REMOVAL

MATCHLINE SEE SHEET 29
-Y2- Sta. 10+80

MATCHLINE SEE SHEET 29
-Y2- Sta. 19+65

MATCHLINE SEE SHEET 18
-L- Sta. 65+35

MATCHLINE SEE SHEET 20
-L- Sta. 72+50

MATCHLINE SEE SHEET 28
-Y2- Sta. 14+25