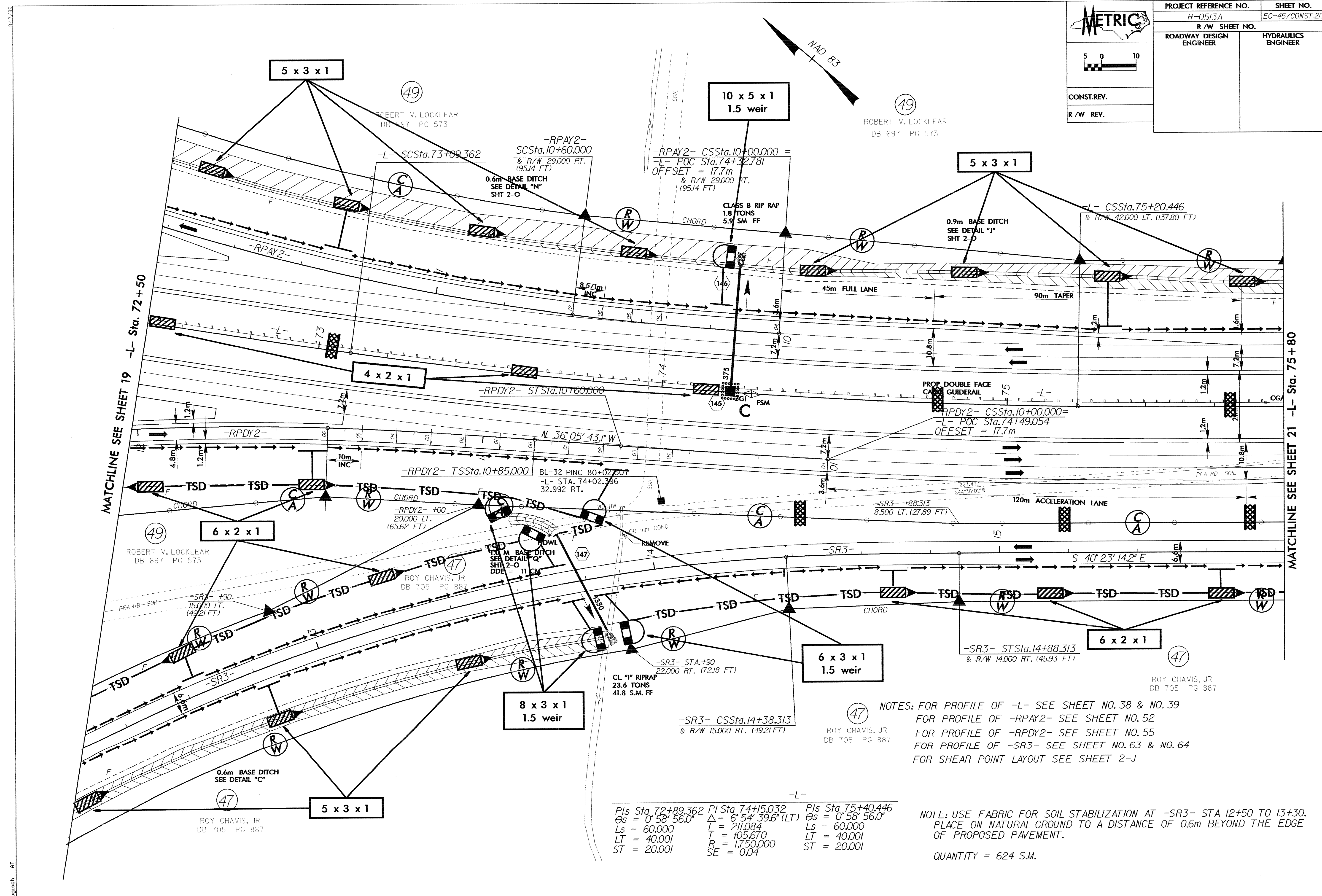
 5 0 10	PROJECT REFERENCE NO.	SHEET NO.
	R-0513A	EC-45/CONST.20
CONST.REV. R/W REV.	R/W SHEET NO.	ROADWAY DESIGN ENGINEER
		HYDRAULICS ENGINEER



MATCHLINE SEE SHEET 19 -L- Sta. 72+50

MATCHLINE SEE SHEET 21 -L- Sta. 75+80

(47) NOTES: FOR PROFILE OF -L- SEE SHEET NO. 38 & NO. 39
 FOR PROFILE OF -RPAY2- SEE SHEET NO. 52
 FOR PROFILE OF -RPDY2- SEE SHEET NO. 55
 FOR PROFILE OF -SR3- SEE SHEET NO. 63 & NO. 64
 FOR SHEAR POINT LAYOUT SEE SHEET 2-J

Pls Sta. 72+89.362	Pls Sta. 74+15.032	Pls Sta. 75+40.446
Os = 0° 58' 56.0"	Δ = 6° 54' 39.6" (LT)	Os = 0° 58' 56.0"
Ls = 60.000	L = 211.084	Ls = 60.000
LT = 40.001	T = 105.670	LT = 40.001
ST = 20.001	R = 1,750.000	ST = 20.001
	SE = 0.04	

NOTE: USE FABRIC FOR SOIL STABILIZATION AT -SR3- STA 12+50 TO 13+30, PLACE ON NATURAL GROUND TO A DISTANCE OF 0.6m BEYOND THE EDGE OF PROPOSED PAVEMENT.

QUANTITY = 624 S.M.

8/17/99
mhauglach AT