
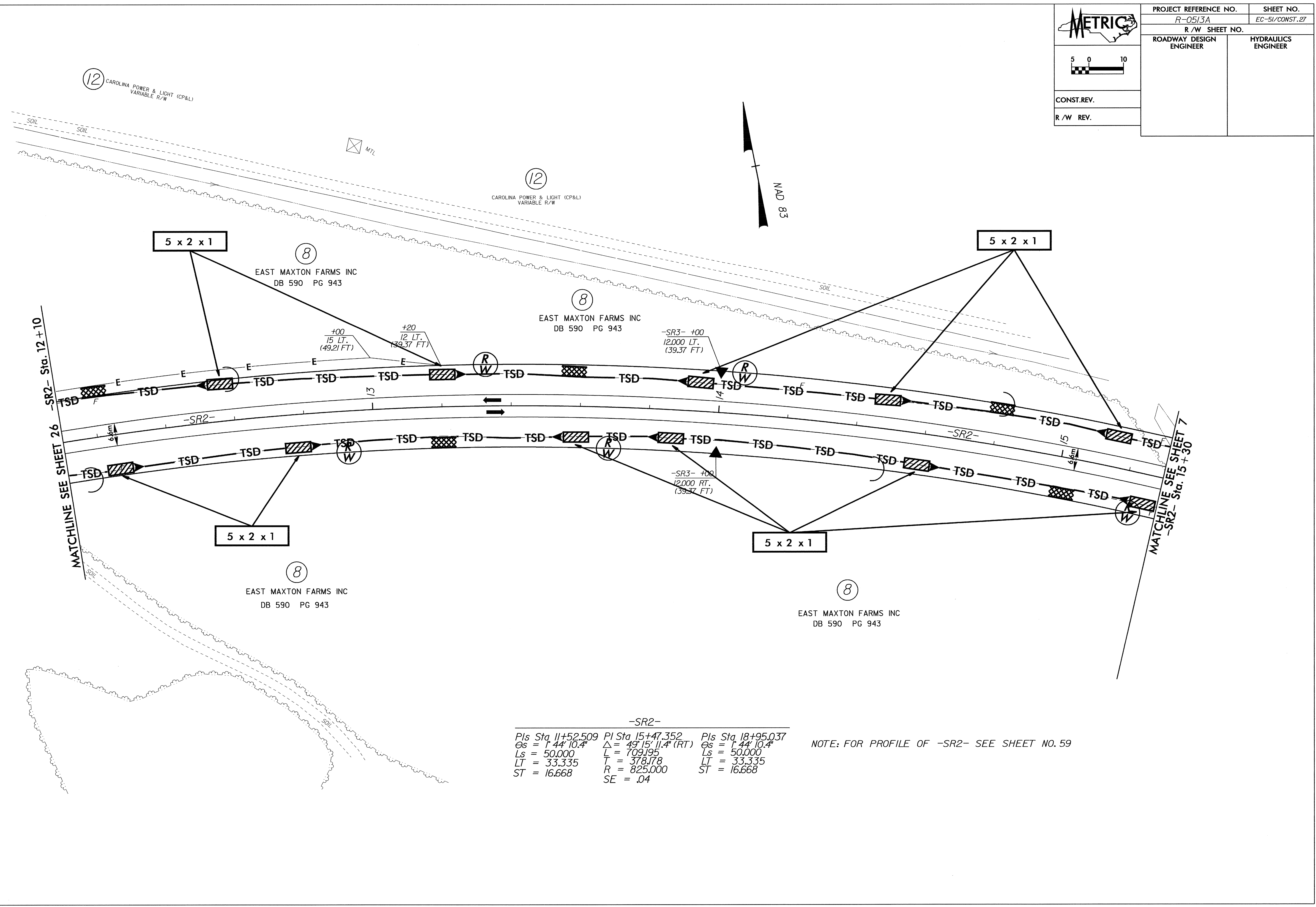


8/07/98
 C:\Users\p\OneDrive\Documents\Projects\0513\0513.dwg
 0513.dwg

 5 0 10 CONST. REV. R/W REV.	PROJECT REFERENCE NO. R-0513A	SHEET NO. EC-51/CONST. 27
	R/W SHEET NO. ROADWAY DESIGN ENGINEER	HYDRAULICS ENGINEER



-SR2-

PIs Sta 11+52.509	PI Sta 15+47.352	PIs Sta 18+95.037
$\theta_s = 1^{\circ}44'10.4''$	$\Delta = 49^{\circ}15'11.4''$ (RT)	$\theta_s = 1^{\circ}44'10.4''$
$L_s = 50.000$	$L = 709.195$	$L_s = 50.000$
$LT = 33.335$	$T = 378.178$	$LT = 33.335$
$ST = 16.668$	$R = 825.000$	$ST = 16.668$
	$SE = .04$	

NOTE: FOR PROFILE OF -SR2- SEE SHEET NO. 59