

8/17/04

METRIC

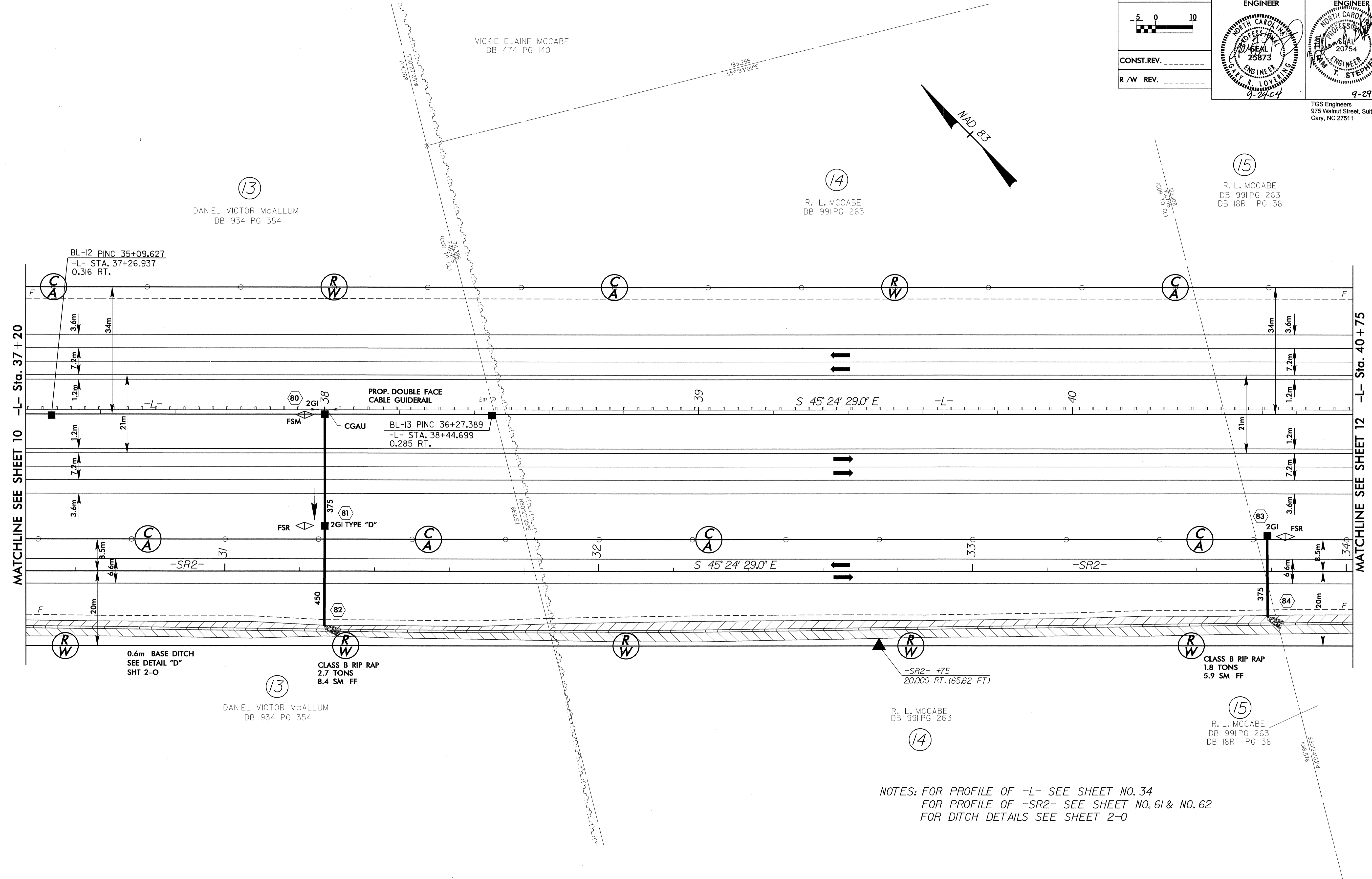
5 0 10

CONST. REV. _____

R/W REV. _____

PROJECT REFERENCE NO. R-0513A	SHEET NO. 11
R/W SHEET NO.	
ROADWAY DESIGN ENGINEER	HYDRAULICS ENGINEER

TGS Engineers
975 Walnut Street, Suite 141
Cary, NC 27511



NOTES: FOR PROFILE OF -L- SEE SHEET NO. 34
 FOR PROFILE OF -SR2- SEE SHEET NO. 61 & NO. 62
 FOR DITCH DETAILS SEE SHEET 2-0

08-JUL-2004 15:06
 TGS Engineers
 AT RD187155