
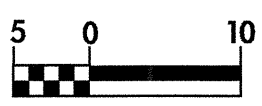

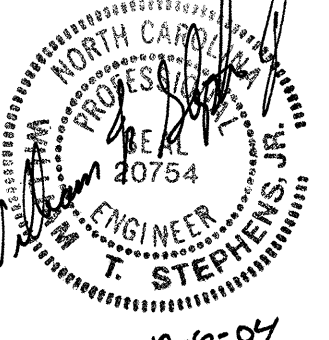
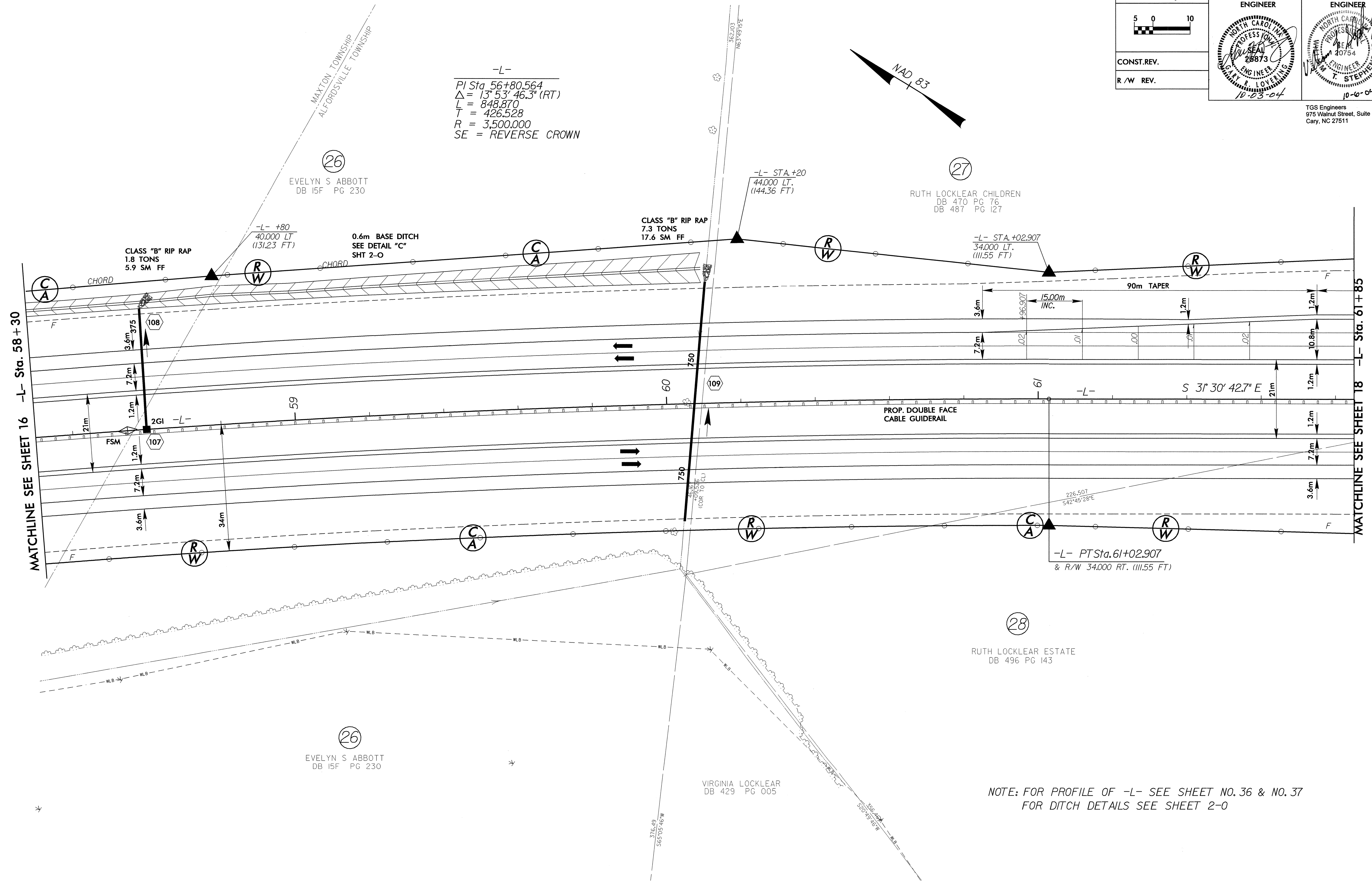


8/17/04

  CONST. REV.	PROJECT REFERENCE NO.	SHEET NO.
	R-0513A	17
R/W REV.	R/W SHEET NO.	
	ROADWAY DESIGN ENGINEER	HYDRAULICS ENGINEER
		
	10-03-04	10-0-04

TGS Engineers
975 Walnut Street, Suite 141
Cary, NC 27511



NOTE: FOR PROFILE OF -L- SEE SHEET NO. 36 & NO. 37
FOR DITCH DETAILS SEE SHEET 2-0

30-SEP-2004 14:50
DRAWN BY: R. B. B. / G. S. B.