

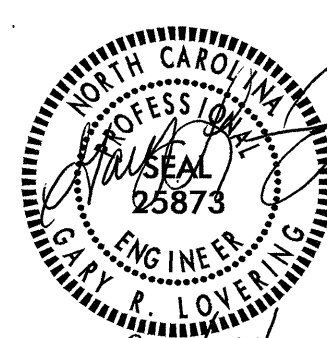
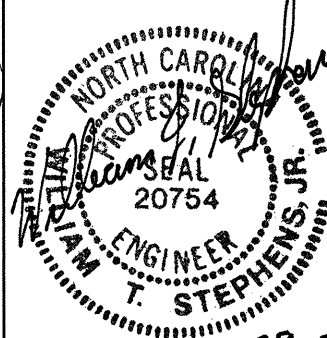
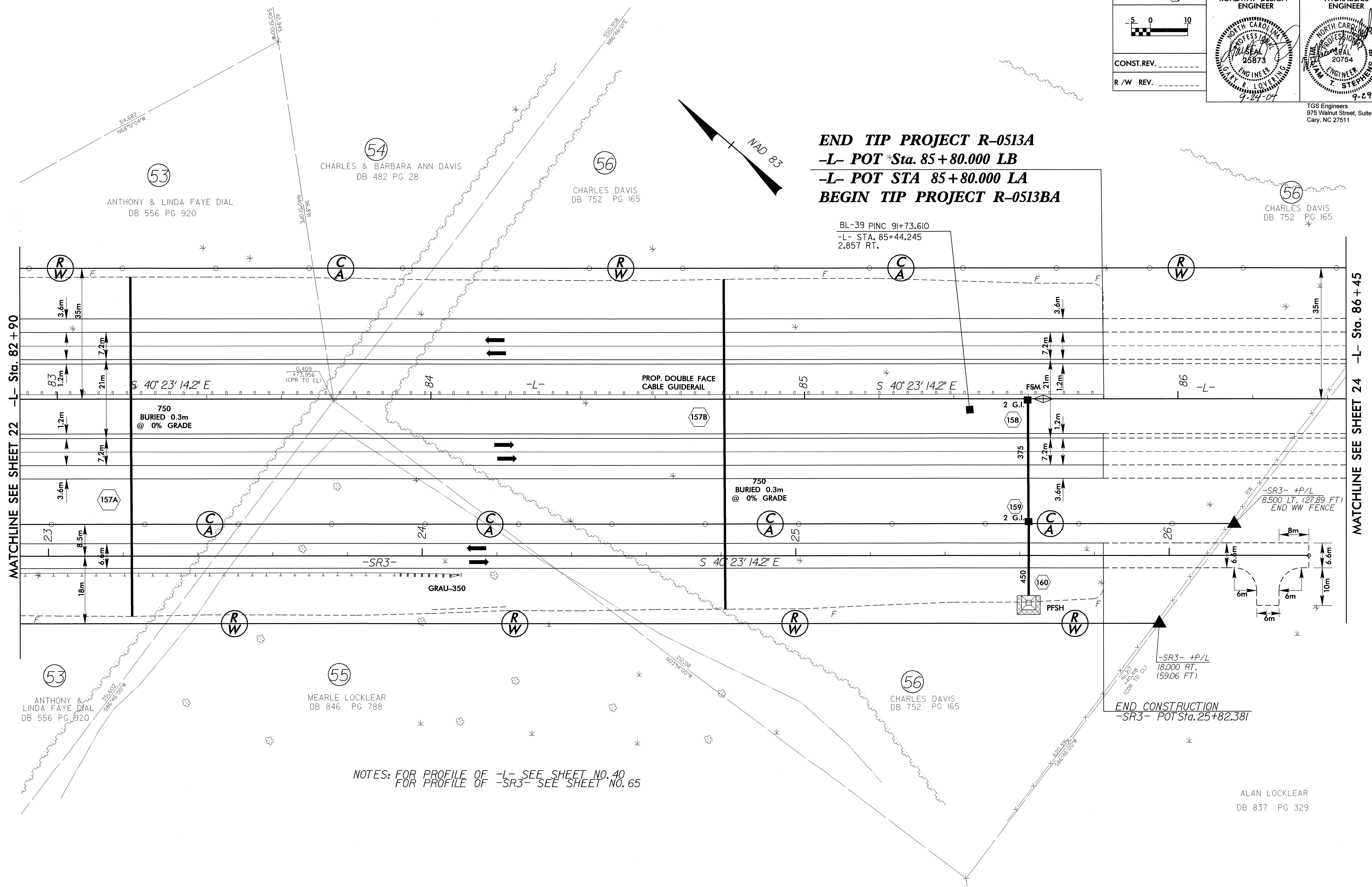


8/17/99

  CONST. REV. _____ R/W REV. _____	PROJECT REFERENCE NO. R-0513A	SHEET NO. 23
	R/W SHEET NO.	
ROADWAY DESIGN ENGINEER 	HYDRAULICS ENGINEER 	
	TGS Engineers 975 Walnut Street, Suite 141 Cary, NC 27511	



END TIP PROJECT R-0513A
-L- POT Sta. 85+80.00 LB
-L- POT STA 85+80.00 LA
BEGIN TIP PROJECT R-0513BA

BL-39 PINC 91+73.610
 -L- STA. 85+44.245
 2.857 RT.

NOTES: FOR PROFILE OF -L- SEE SHEET NO. 40
 FOR PROFILE OF -SR3- SEE SHEET NO. 65

END CONSTRUCTION
 -SR3- POT Sta. 25+82.38/

ALAN LOCKLEAR
 DB 837 PG 329

21-SEP-2004 07:45
 J:\PROJECTS\0513A\0513A.DWG
 10/13/04 7:132