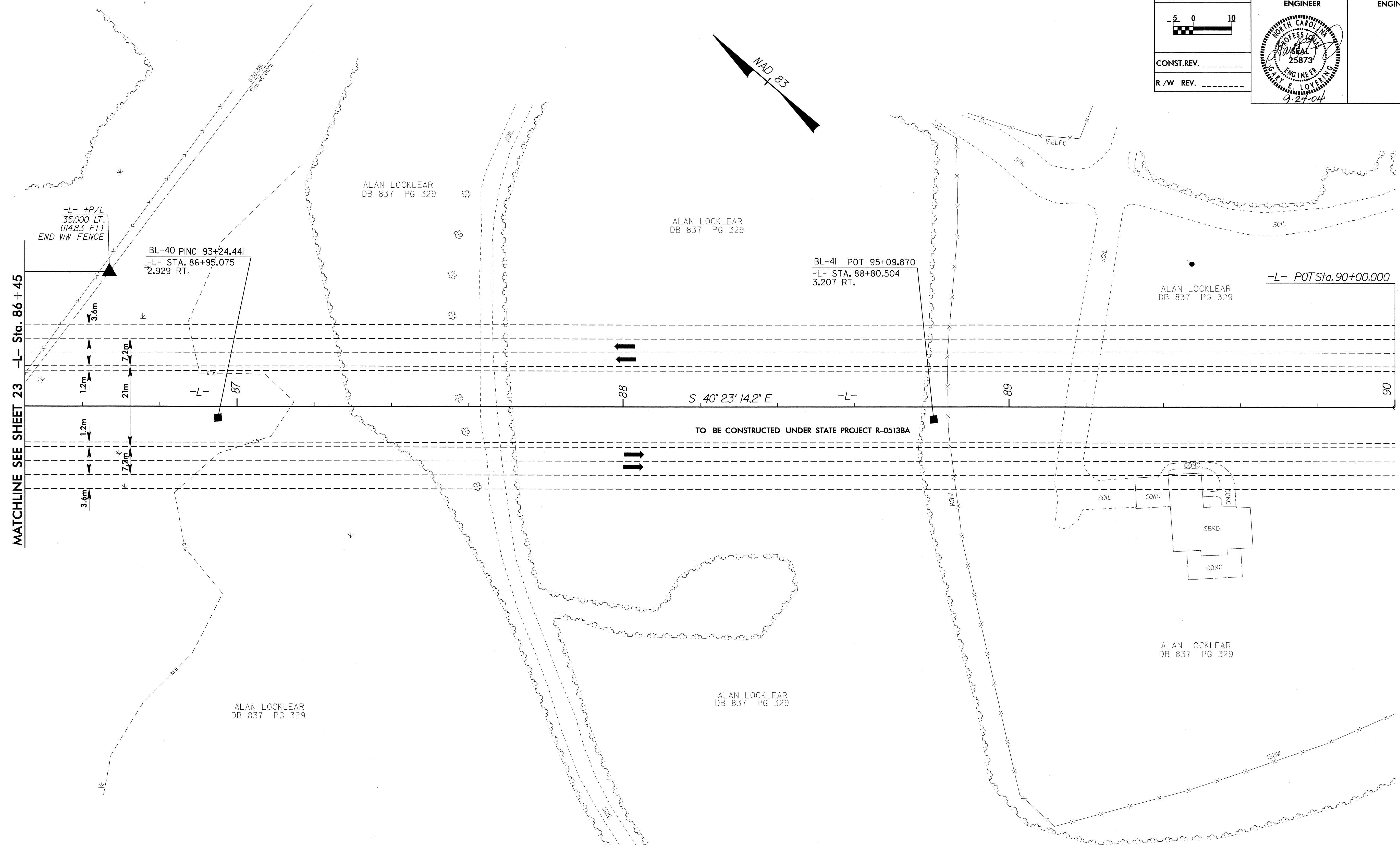
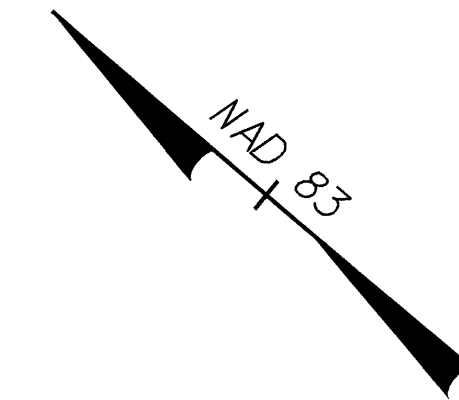
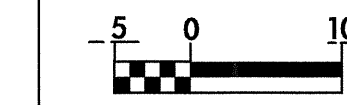


8/17/23



PROJECT REFERENCE NO. R-0513A	SHEET NO. 24
R/W SHEET NO.	
ROADWAY DESIGN ENGINEER	HYDRAULICS ENGINEER
CONST. REV. _____	
R/W REV. _____	



MATCHLINE SEE SHEET 23 -L- Sta. 86+45

S 40° 23' 14.2\"

TO BE CONSTRUCTED UNDER STATE PROJECT R-0513BA

NOTE: FOR PROFILE OF -L- SEE SHEET NO. 40

08-JUL-2004 15:00  
R:\Projects\0513A\0513A.dwg  
AL Locklear