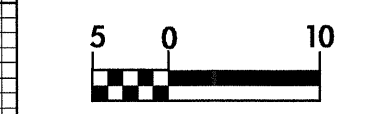


5/09/04

DITCH LEGEND
LEFT DITCH



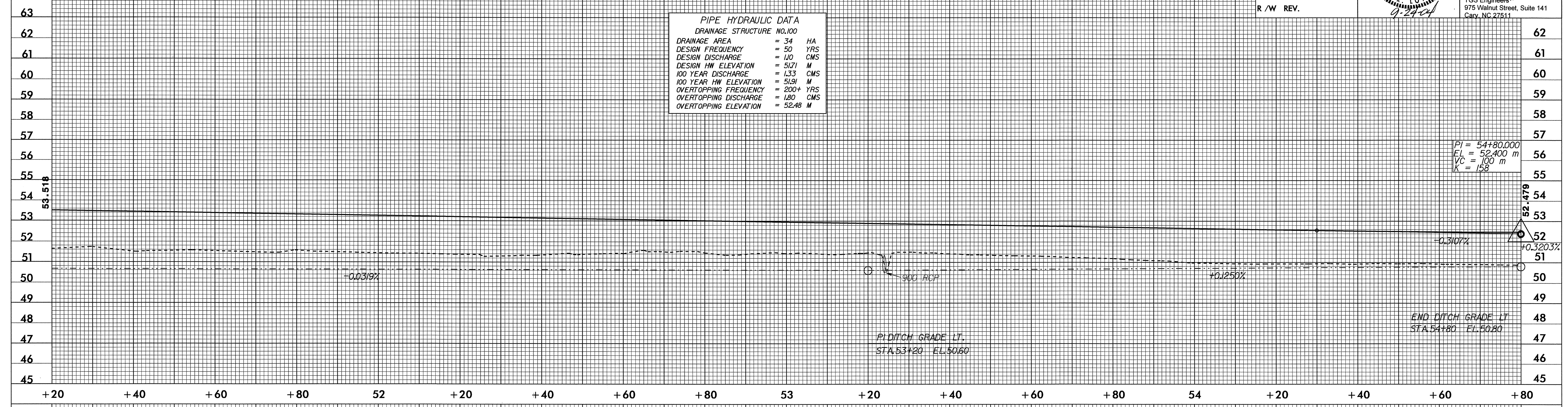
CONST. REV.

R / W REV.

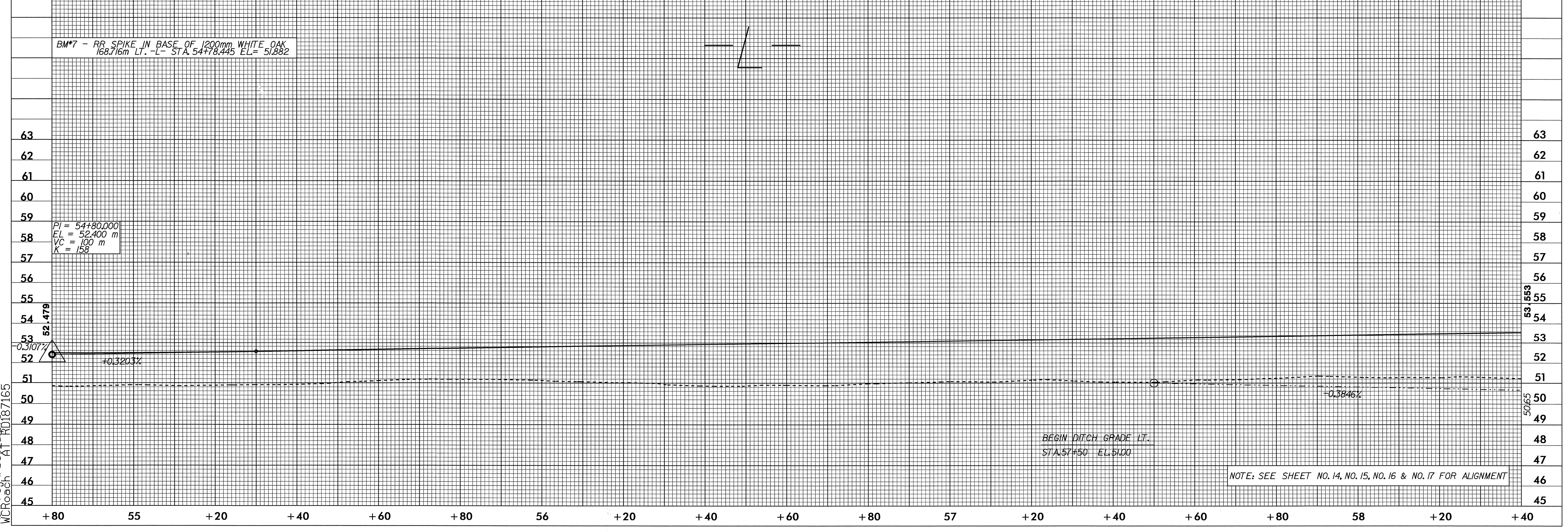
PROJECT REFERENCE NO. R-0513A	SHEET NO. 36
ROADWAY DESIGN ENGINEER	HYDRAULICS ENGINEER
TGS Engineering 975 Walnut Street, Suite 141 Cary, NC 27511	

PIPE HYDRAULIC DATA
DRAINAGE STRUCTURE NO.100

DRAINAGE AREA	= 34	HA
DESIGN FREQUENCY	= 50	YRS
DESIGN DISCHARGE	= 110	CMS
DESIGN HW ELEVATION	= 5171	M
100 YEAR DISCHARGE	= 133	CMS
100 YEAR HW ELEVATION	= 5191	M
OVERTOPPING FREQUENCY	= 200+	YRS
OVERTOPPING DISCHARGE	= 180	CMS
OVERTOPPING ELEVATION	= 5248	M



BM*7 - RR SPIKE IN BASE OF 1200mm WHITE OAK
168.716m LT. -L- STA. 54+78.445 EL= 51.882



BEGIN DITCH GRADE LT.
STA. 57+50 EL. 51.00

NOTE: SEE SHEET NO. 14, NO. 15, NO. 16 & NO. 17 FOR ALIGNMENT

08-JUL-2004 14:55
R:\proj\1105136\1105136.dwg
M:\roach_A1\1105136.dwg