

6/09/04

-SR2-

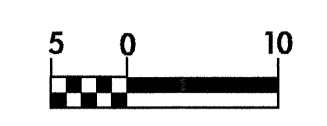
RIGHT DITCH

DITCH LEGEND



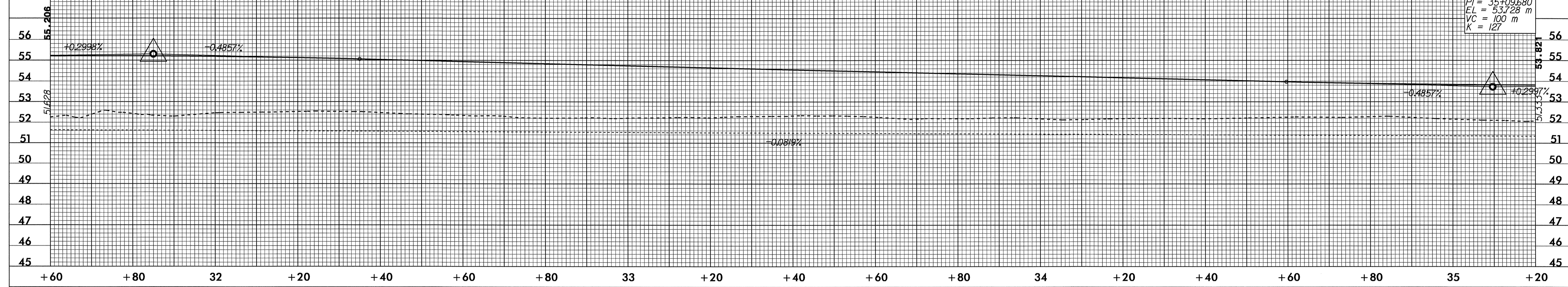
PROJECT REFERENCE NO. R-0513A	SHEET NO. 62
ROADWAY DESIGN ENGINEER	HYDRAULICS ENGINEER
CONST. REV.	
R / W REV.	

TGS Engineers  
976 Walnut Street, Suite 141  
Cary, NC 27511



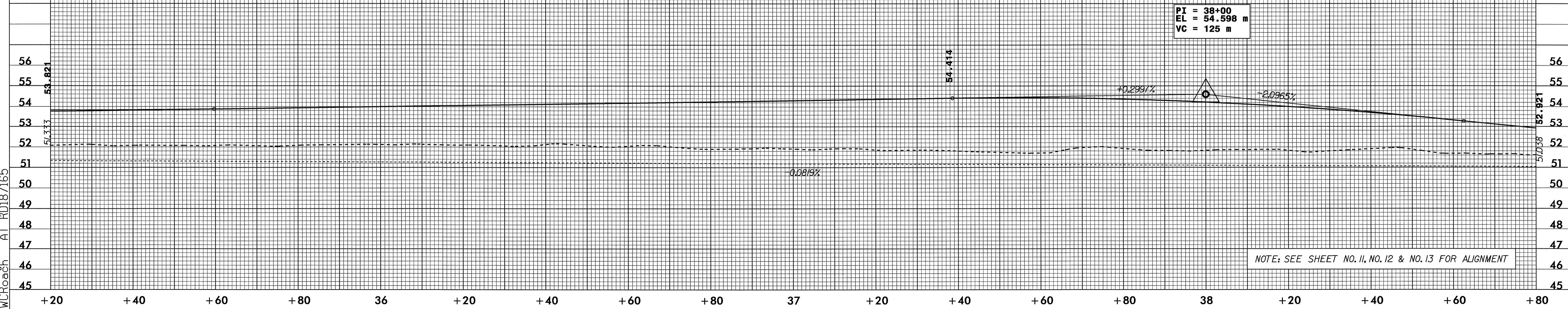
$PI = 31+85.000$   
 $EL = 55.305 \text{ m}$   
 $VC = 100 \text{ m}$   
 $K = 127$

$PI = 35+09.680$   
 $EL = 53.728 \text{ m}$   
 $VC = 100 \text{ m}$   
 $K = 127$



-SR2-

$PI = 38+00$   
 $EL = 54.598 \text{ m}$   
 $VC = 125 \text{ m}$



NOTE: SEE SHEET NO. 11, NO. 12 & NO. 13 FOR ALIGNMENT

08-JUL-2004 14:00  
 R:\Proj\0513a\Pl1  
 WCRoach At RD187165