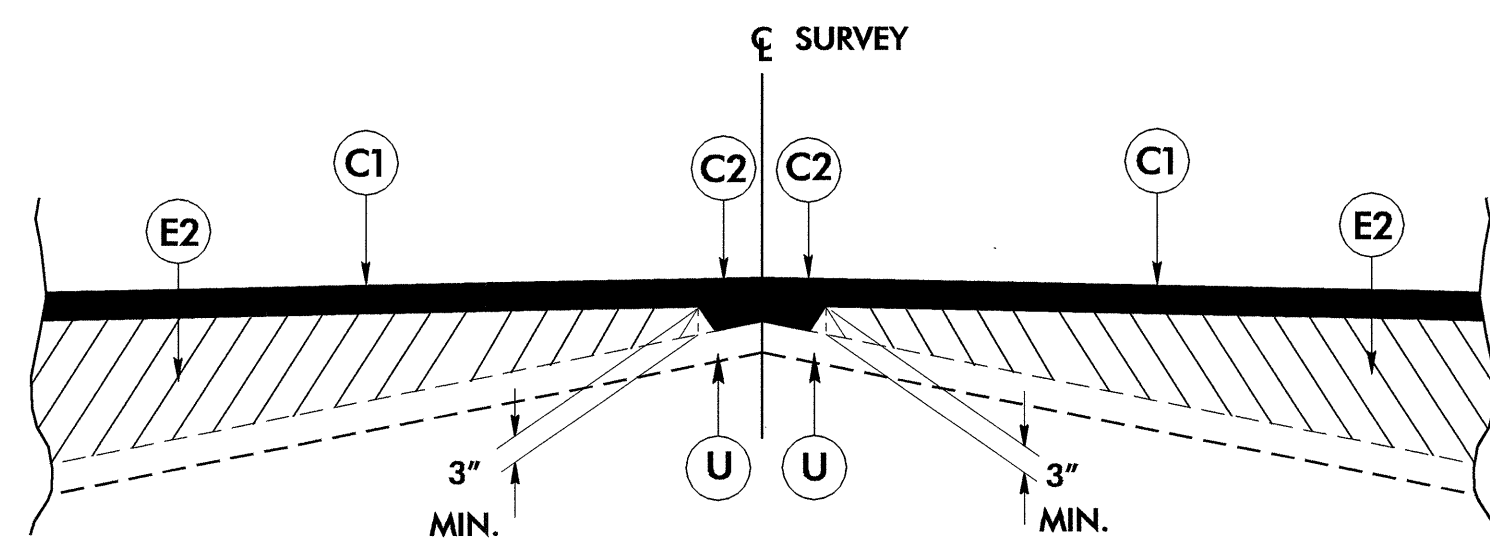


5/28/99

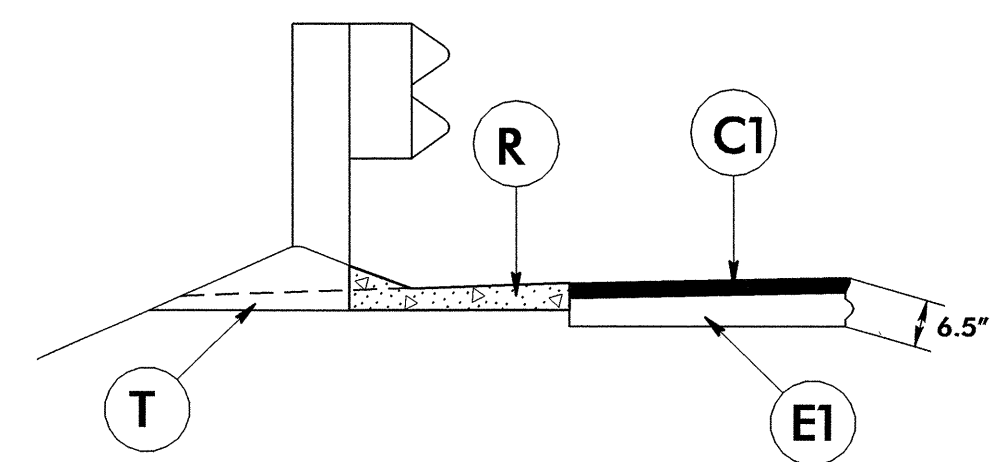
FINAL PAVEMENT DESIGN SCHEDULE

C1	PROP. APPROX. 2.5" ASPHALT CONCRETE SURFACE COURSE, TYPE SF9.5A, AT AN AVERAGE RATE OF 137.50 LBS. PER SQ. YD. IN EACH TWO LAYERS.
C2	PROP. VAR. DEPTH ASPHALT CONCRETE SURFACE COURSE, TYPE SF9.5A, AT AN AVERAGE RATE OF 110 LBS. PER SQ. YD. PER 1" DEPTH. TO BE PLACED IN LAYERS NOT TO EXCEED 1.5" IN DEPTH.
E1	PROP. APPROX. 4" ASPHALT CONCRETE BASE COURSE, TYPE B25.0B, AT AN AVERAGE RATE OF 456 LBS. PER SQ. YD.
E2	PROP. VAR. DEPTH ASPHALT CONCRETE BASE COURSE, TYPE B25.0B, AT AN AVERAGE RATE OF 114 LBS. PER SQ. YD. PER 1" DEPTH. TO BE PLACED IN LAYERS NOT LESS THAN 3" IN DEPTH OR GREATER THAN 5.5" IN DEPTH.
J	PROP. 8" AGGREGATE BASE COURSE.
P	PRIME COAT AT THE RATE OF 0.35 GAL. PER SQ. YD.
R	SHOULDER BERM GUTTER.
T	EARTH MATERIAL.
U	EXISTING PAVEMENT.
W	VARIABLE DEPTH ASPHALT PAVEMENT (SEE WEDGING DETAIL ON THIS SHEET).

NOTE: PAVEMENT EDGE SLOPES ARE 1:1 UNLESS SHOWN OTHERWISE.



Wedging Detail

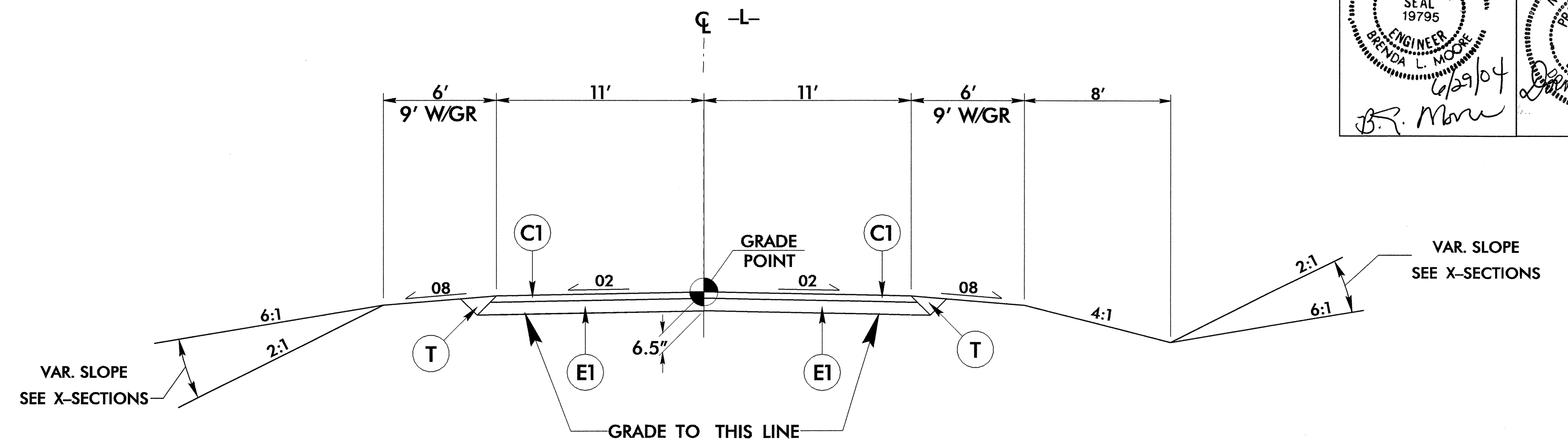


SHOULDER BERM GUTTER DETAIL

USE SHOULDER BERM GUTTER

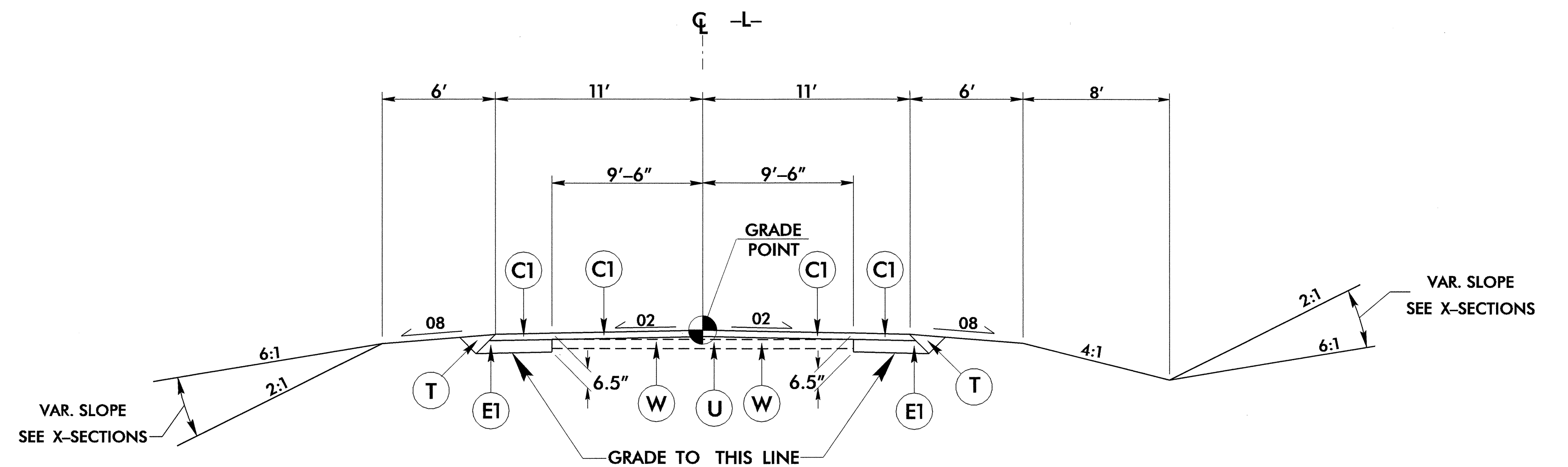
- L- STA. 15+14.00 TO -L- STA. 16+80.10 (RT.)
- L- STA. 19+09.76 TO -L- STA. 19+14.25 (LT. & RT.)
- L- STA. 16+91.75 TO -L- STA. 16+96.50 (LT.)

PROJECT REFERENCE NO. B-3506	SHEET NO. 2
RW SHEET NO.	
ROADWAY DESIGN ENGINEER BRENDAN L. MOORE SEAL 19795 6/29/04	PAVEMENT DESIGN ENGINEER NORTH CAROLINA PROFESSIONAL ENGINEER SEAL 13368 6/30/04



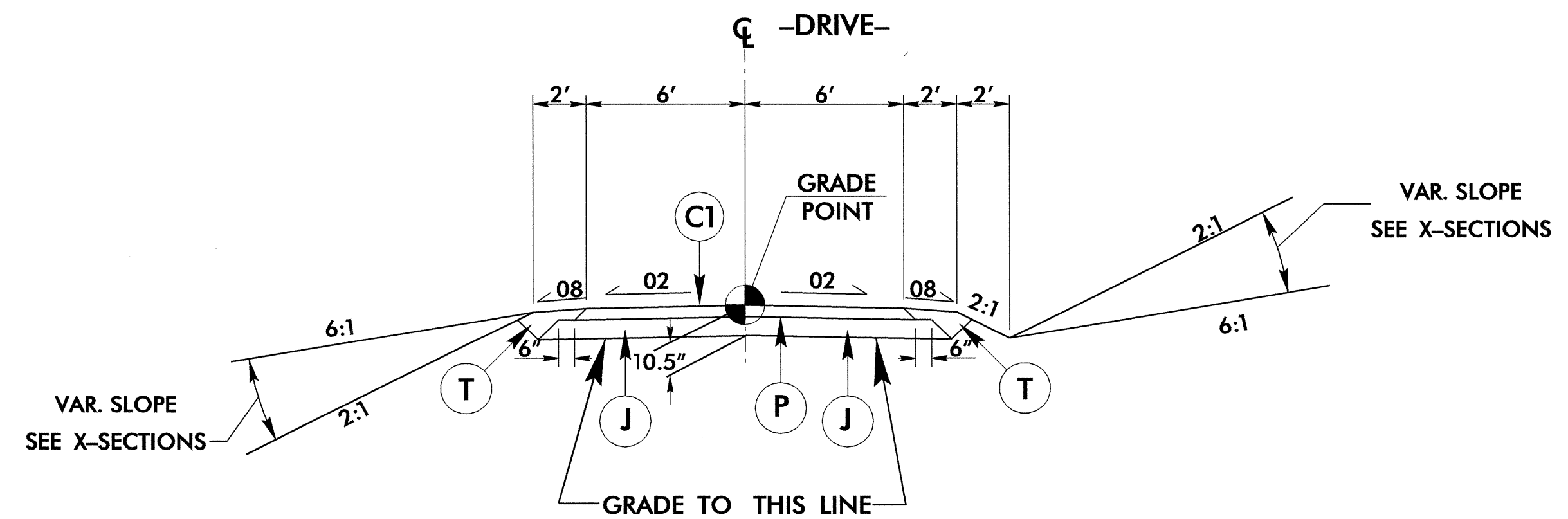
TYPICAL SECTION NO. 1

USE TYPICAL SECTION NO. 1
-L- STA. 13+00.00 TO -L- STA. 17+15.00 (BEGIN BRIDGE)
-L- STA. 18+80.00 (END BRIDGE) TO -L- STA. 24+75.00



TYPICAL SECTION NO. 2

USE TYPICAL SECTION NO. 2
-L- STA. 24+75.00 TO -L- STA. 25+00.00



TYPICAL SECTION NO. 3

USE TYPICAL SECTION NO. 3
-DRIVE- STA. 10+20.00 TO -DRIVE- STA. 11+45.82

29-JUN-2004 12:24
P:\Woodley\Proj\B3506.txd
AHF:slb