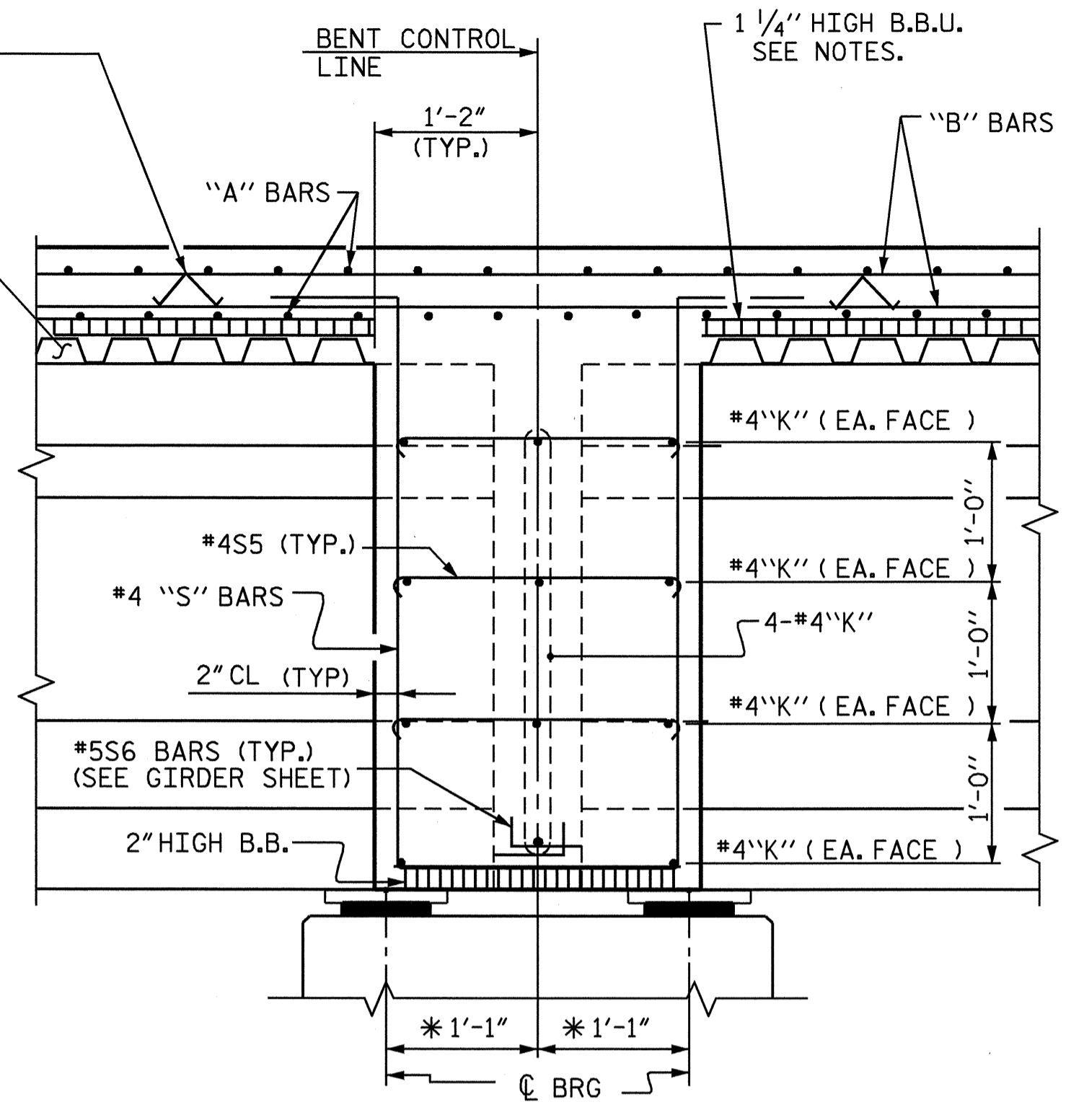


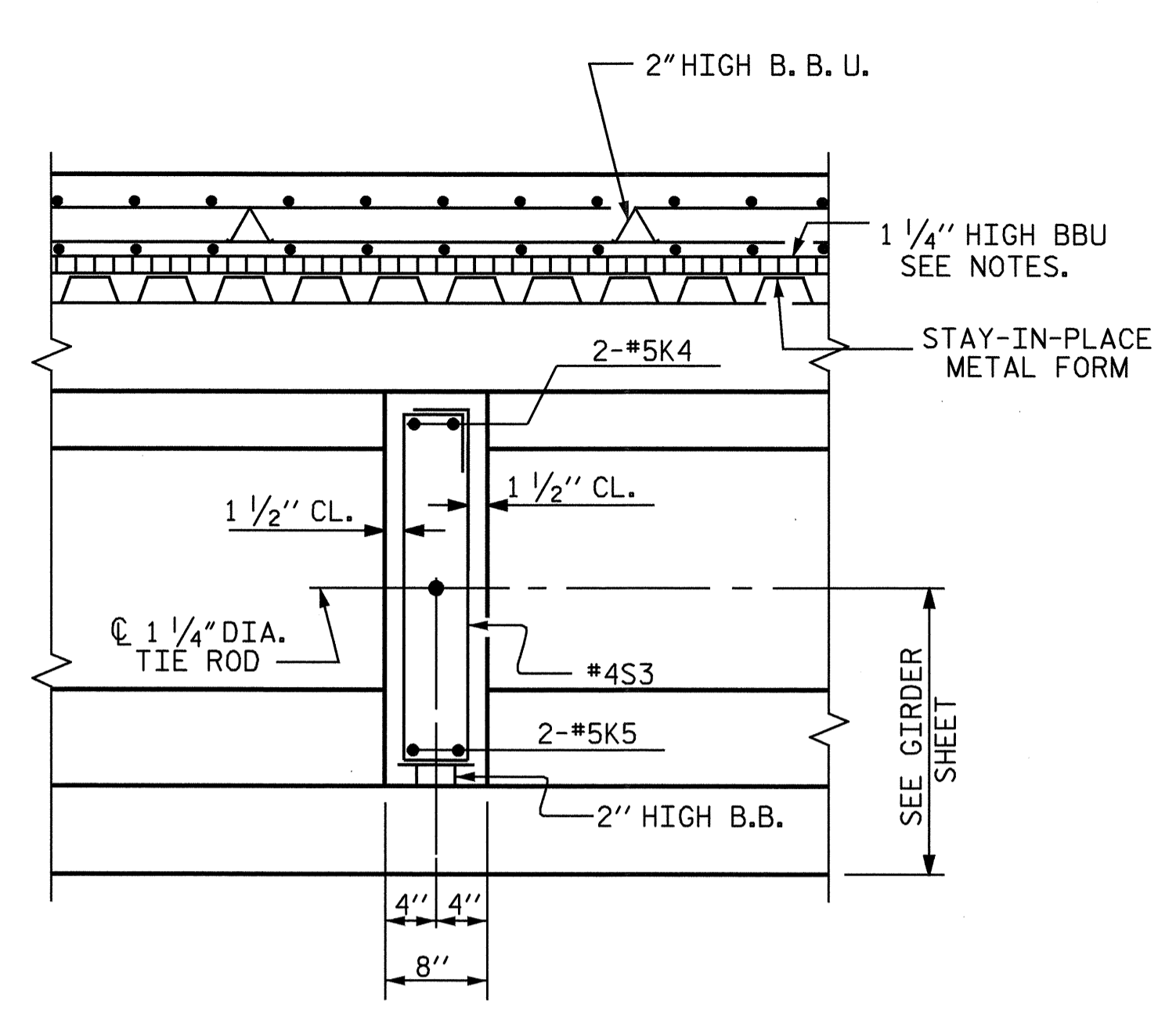
SECTION @ END BENT DIAPHRAGM

* #5G BAR MAY BE SHIFTED SLIGHTLY, AS NECESSARY, TO CLEAR REINFORCING STEEL AND STIRRUPS.

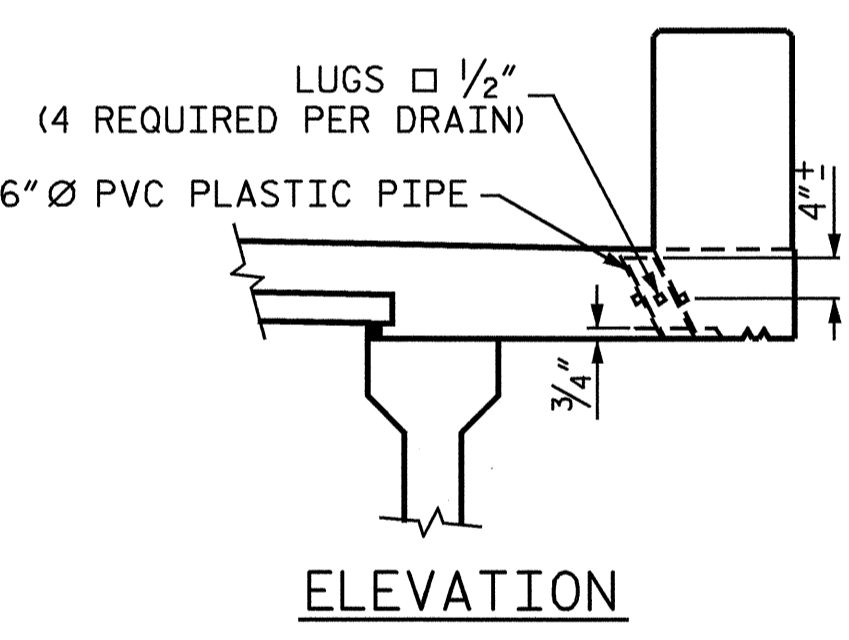


SECTION @ BENT DIAPHRAGM

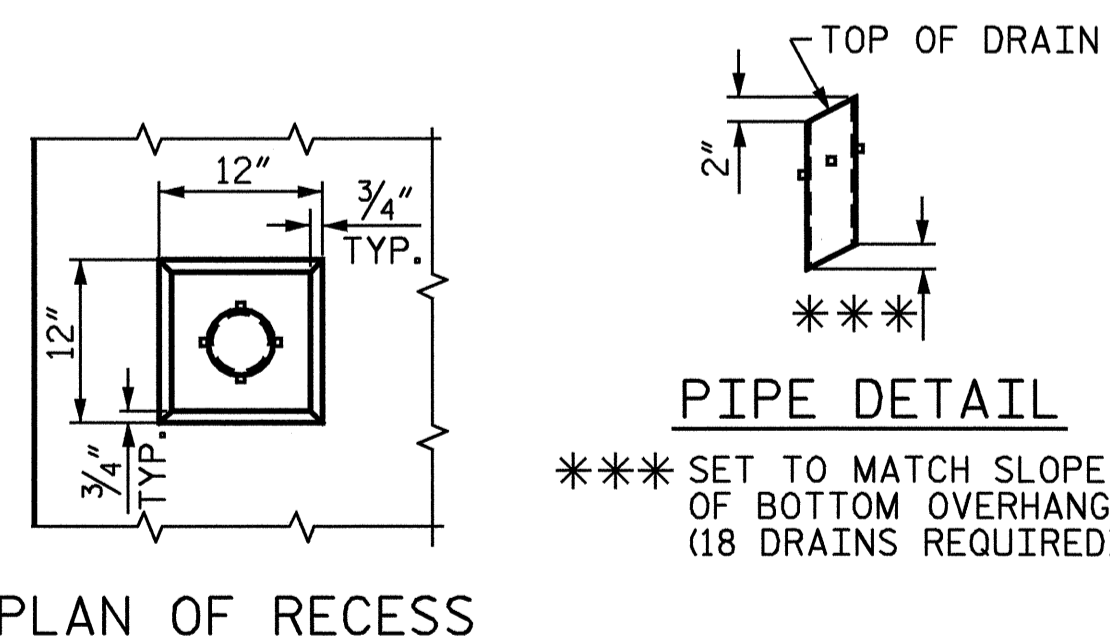
** MEASURED ALONG CL GIRDER



SECTION @ INTERMEDIATE DIAPHRAGM



ELEVATION



PIPE DETAIL

*** SET TO MATCH SLOPE OF BOTTOM OVERHANG (18 DRAINS REQUIRED)

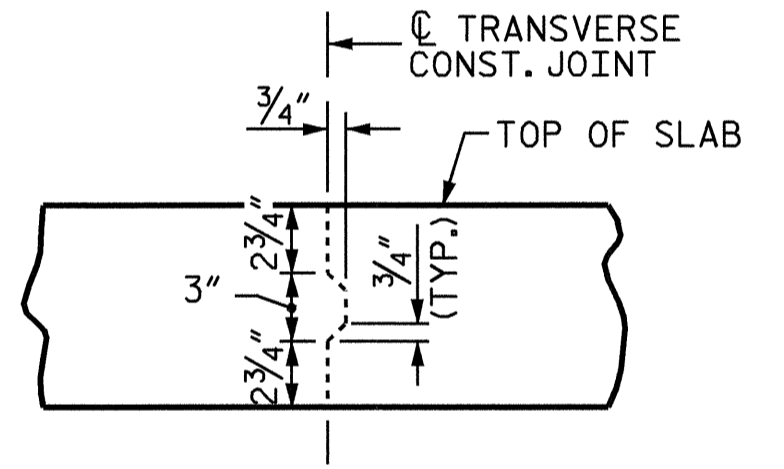
DRAIN DETAILS

NOTES: TOP OF FLOOR DRAINS TO BE SET 3/8 inch BELOW SURFACE OF SLAB.

4 - 1/2 inch LUGS TO BE GLUED TO THE PVC PLASTIC PIPE AT EQUAL SPACES AROUND THE PIPE DRAIN APPROXIMATELY 4 inch FROM THE TOP OF THE PIPE.

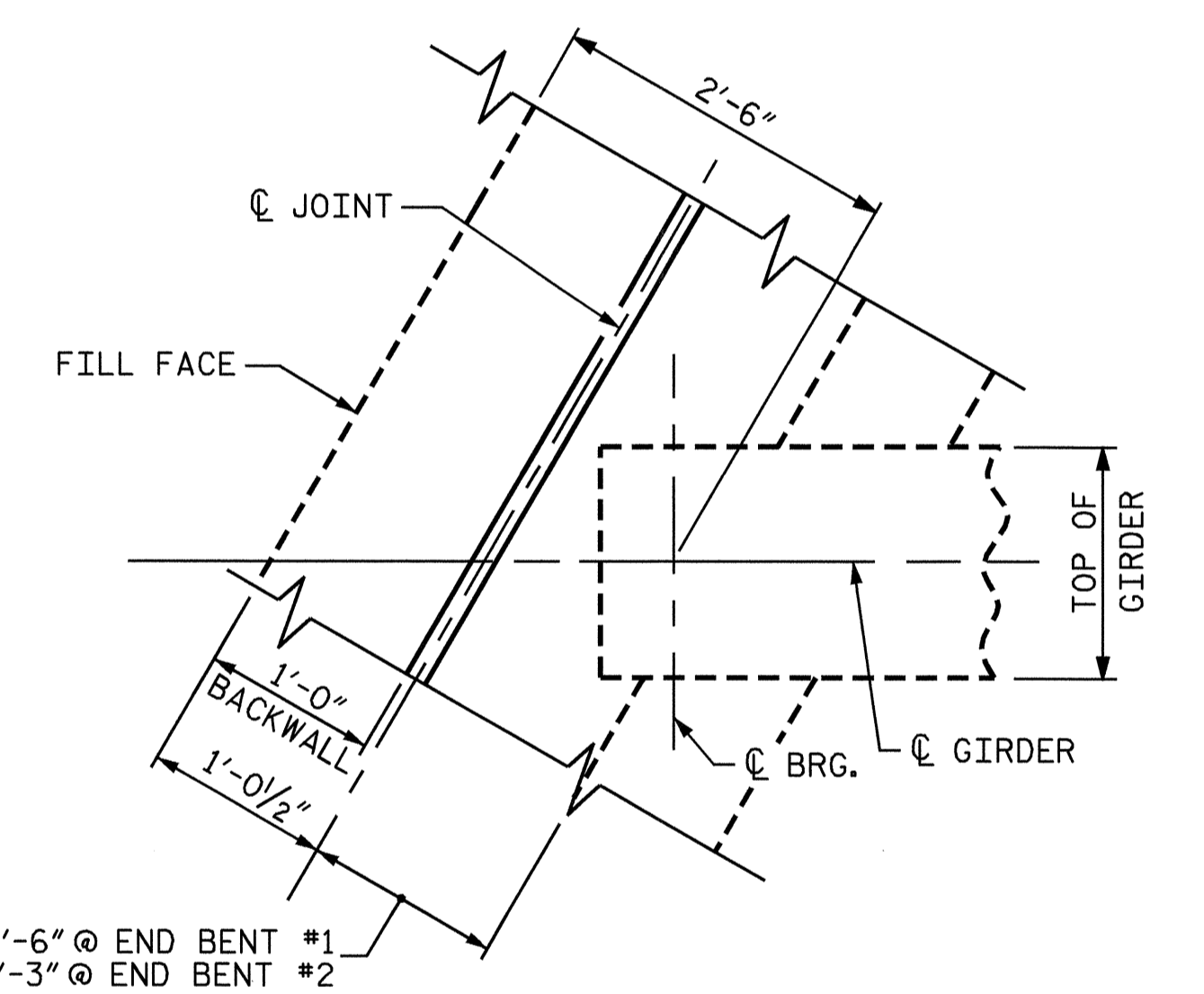
THE 6 inch Ø PVC PLASTIC PIPE AND FITTINGS SHALL BE SCHEDULE 40 AND CONFORM TO ASTM D1785.

DRAWN BY : H. T. BARBOUR DATE : 11-17-03
 CHECKED BY : D. A. DAVENPORT DATE : 3-04

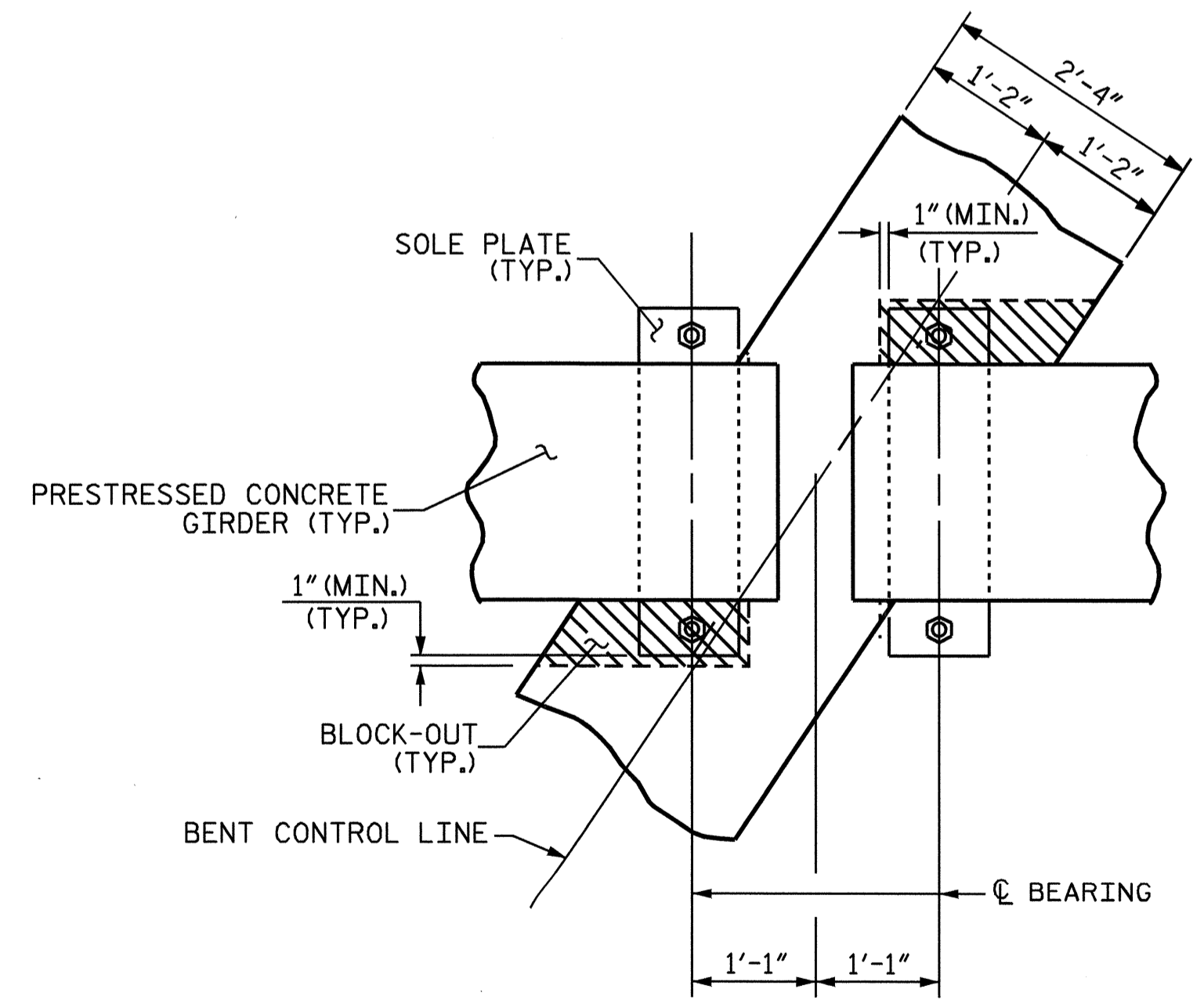


TRANSVERSE CONSTRUCTION JOINT DETAIL

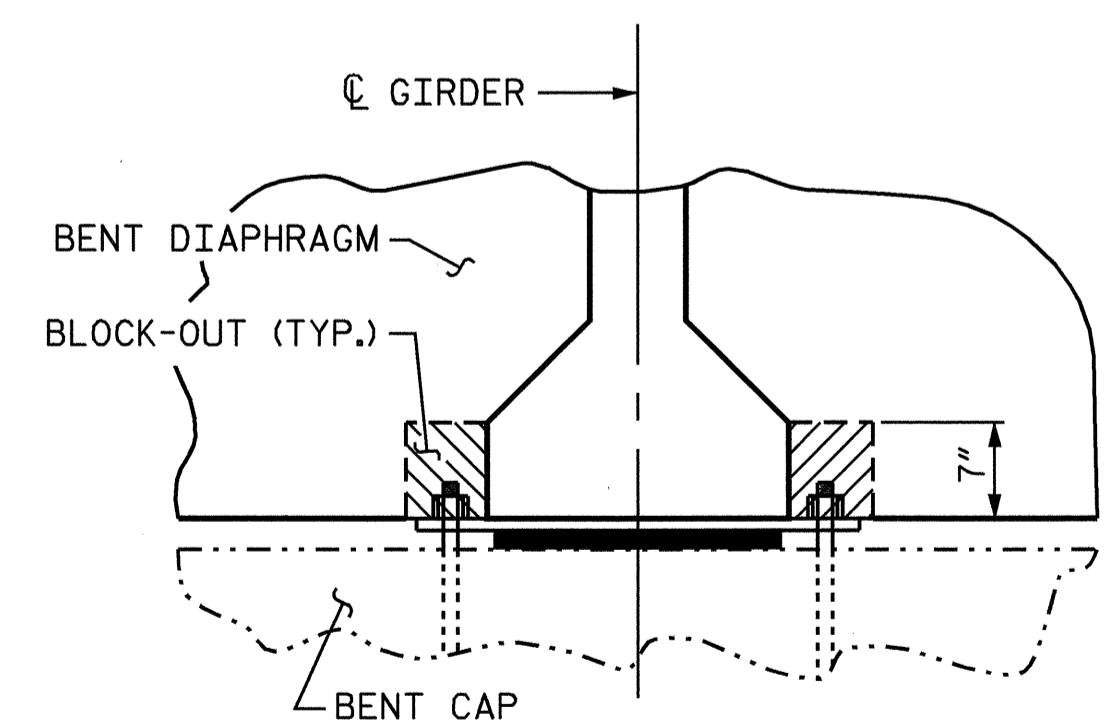
NOTE: REINFORCING STEEL IN SLAB NOT SHOWN. LONGITUDINAL REINFORCING STEEL SHALL BE CONTINUOUS THRU JOINT.



PLAN @ END BENT DIAPHRAGM



PLAN



SECTION

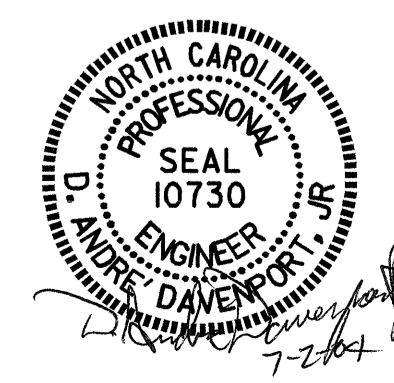
BENT DIAPHRAGM BLOCKOUT DETAIL

PROJECT NO. B-3506
RANDOLPH COUNTY
 STATION: 17+97.50 -L-

SHEET 2 OF 2

STATE OF NORTH CAROLINA
 DEPARTMENT OF TRANSPORTATION
 RALEIGH

**SUPERSTRUCTURE
 TYPICAL SECTION
 DETAILS**



REVISIONS						SHEET NO. S-6
NO.	BY:	DATE:	NO.	BY:	DATE:	
1			3			TOTAL SHEETS 35
2			4			