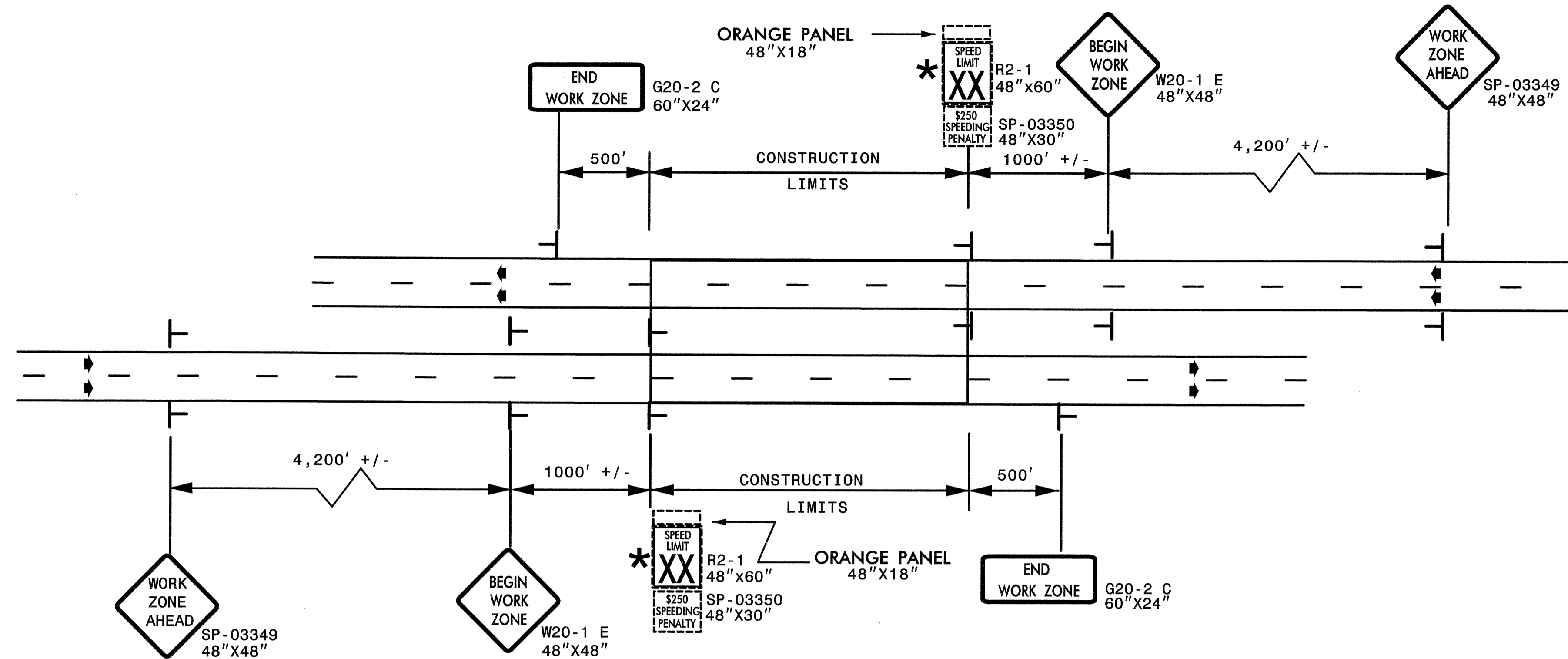


ADVANCED WORK ZONE WARNING SIGNING FOR FREEWAYS (4 LANES OR GREATER)

PROJ. REFERENCE NO.	SHEET NO.
R-4484	TCP-6
34632.3.1	

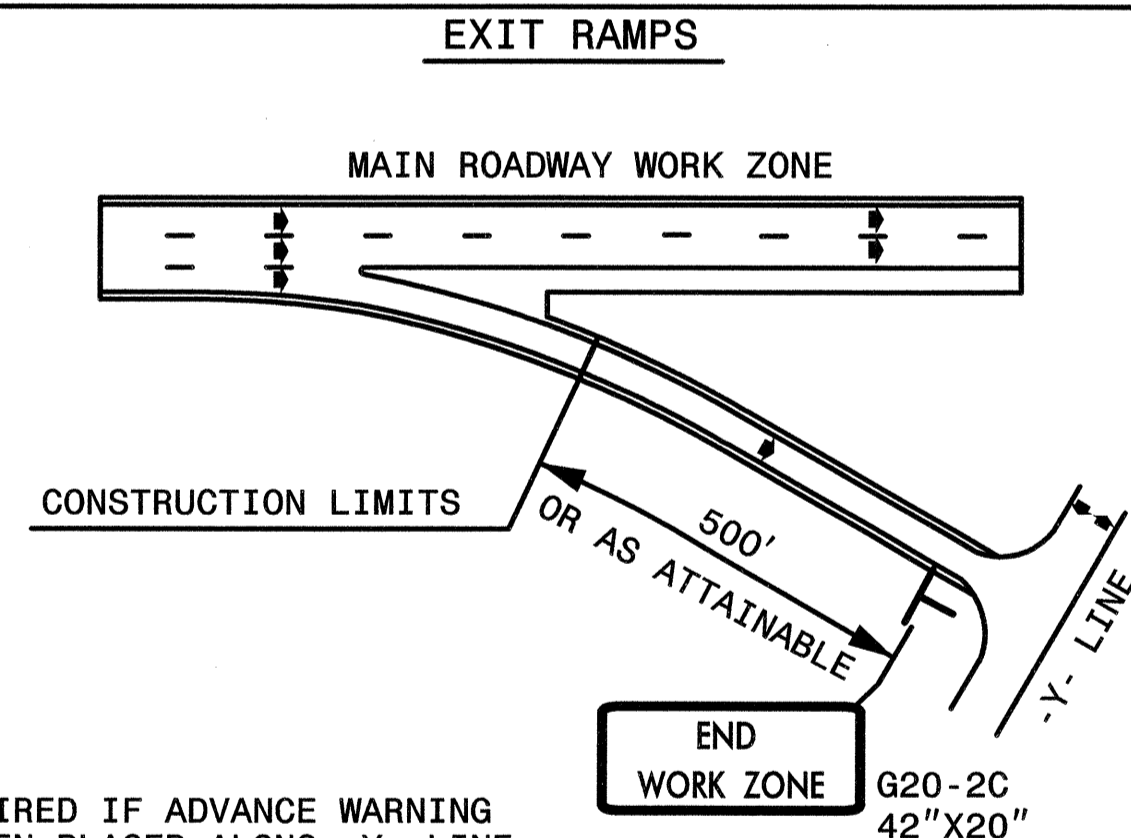
DETAIL A



LEGEND	
	STATIONARY SIGN
◆	DIRECTION OF TRAFFIC FLOW

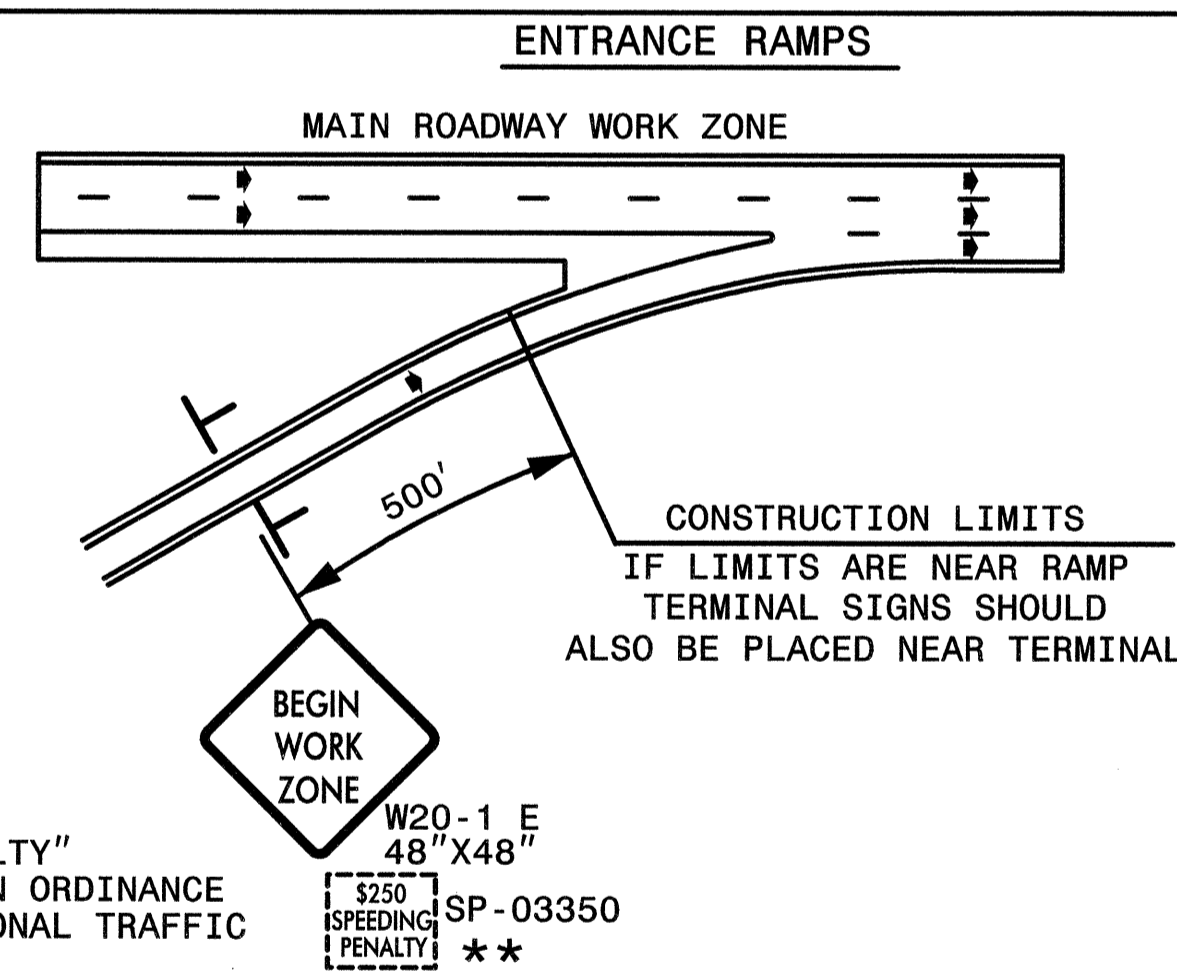
* USE THE "\$250 SPEEDING PENALTY" SIGN, SPEED LIMIT SIGN, AND ORANGE PANEL; ONLY WHEN A "\$250 SPEEDING PENALTY" ORDINANCE HAS BEEN ISSUED BY THE REGIONAL TRAFFIC ENGINEER.

DETAIL B



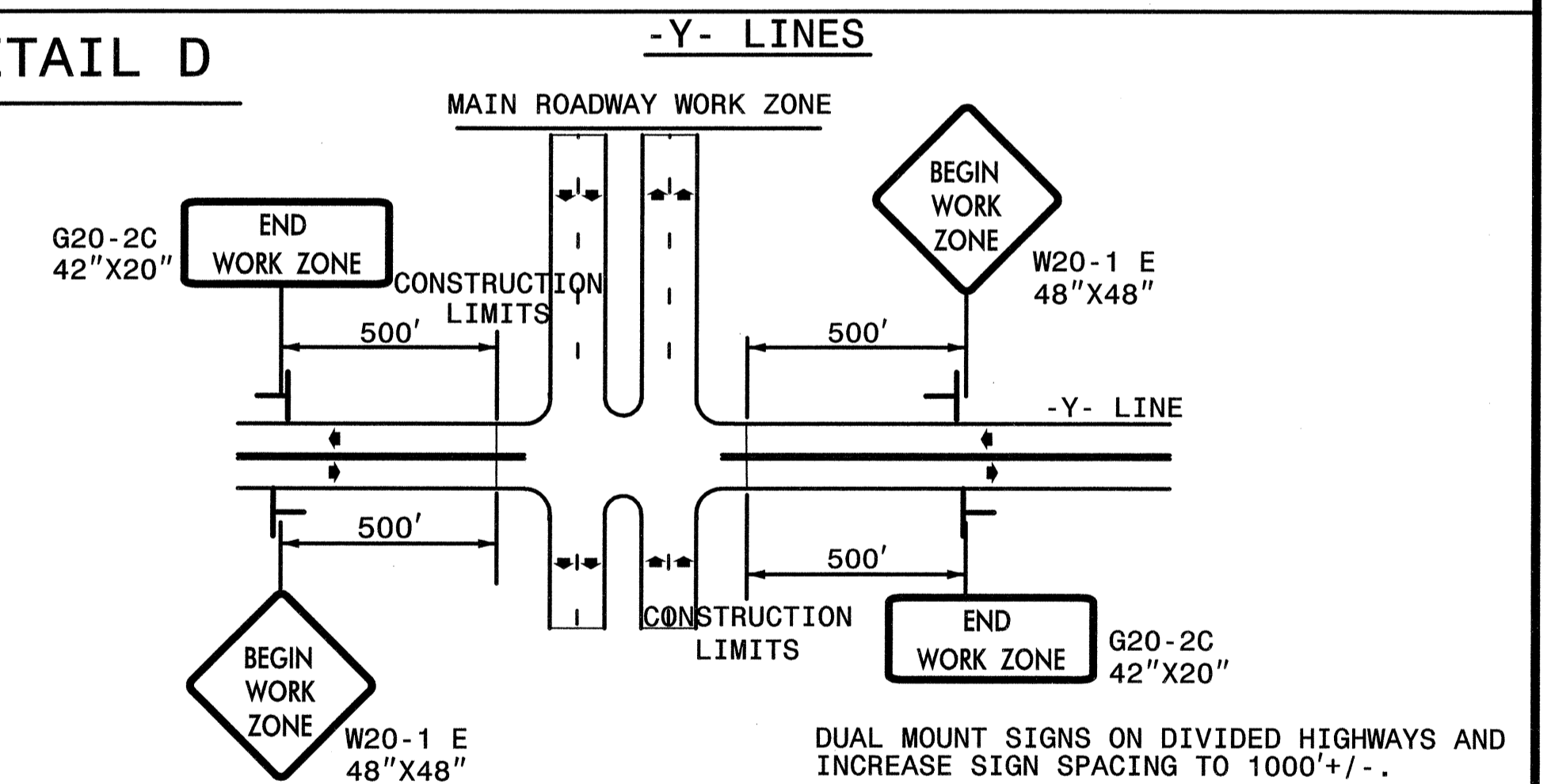
NOTE: SIGN NOT REQUIRED IF ADVANCE WARNING SIGNS HAVE BEEN PLACED ALONG -Y- LINE THAT RAMP INTERSECTS. IF CONSTRUCTION LIMITS ARE AT END OF RAMP, PLACE SIGN AT END OF RAMP.

DETAIL C



** USE THE "\$250 SPEEDING PENALTY" SUPPLEMENTAL SIGN ONLY IF AN ORDINANCE HAS BEEN ISSUED BY THE REGIONAL TRAFFIC ENGINEER.

DETAIL D



DUAL MOUNT SIGNS ON DIVIDED HIGHWAYS AND INCREASE SIGN SPACING TO 1000'+/-.

GENERAL NOTES

- USE TYPE I AND TYPE II SHEETING FOR ALL WORK ZONE WARNING SIGNS UNTIL THE EXISTING TYPE I AND TYPE II SHEETING INVENTORIES ARE EXHAUSTED, OTHERWISE USE TYPE VII SHEETING OR HIGHER. (STANDARD PRACTICE FOR SIGN SHEETING, S-68)
- DO NOT INSTALL ADVANCE WARNING SIGNS MORE THAN 3 DAYS PRIOR TO BEGINNING OF WORK.
- SIGNS SHOWN ARE REQUIRED FOR WORK ZONES THAT WILL REMAIN IN EFFECT OVERNIGHT. FOR SHORT-TERM DAILY MAINTENANCE TYPE OPERATIONS, THIS SIGNING APPLICATION IS OPTIONAL; MAY USE ONLY APPLICABLE ROADWAY STANDARD DRAWINGS INSTEAD. HOWEVER, IF THIS SIGNING APPLICATION IS USED, SIGNS MAY BE PORTABLE MOUNTED.
- ALL SIGN SPACING DIMENSIONS ARE APPROXIMATE, FIELD ADJUST AS NECESSARY OR AS DIRECTED.
- USE 3LB STEEL U-CHANNEL POST OR 4" X 4" WOOD POST FOR ALL WORK ZONE SIGNS. 3LB STEEL U-CHANNEL POSTS MUST MEET THE REQUIREMENTS OF STANDARD SPECIFICATION SECTION 1094-1(B). MAY BE GALVANIZED STEEL, OR MAY BE PAINTED GREEN BY THE POST MANUFACTURER. SQUARE STEEL TUBING POSTS HAVING EQUIVALENT STRENGTH OF THE 3 LB STEEL U-CHANNEL POST ARE ALSO ACCEPTABLE FOR USE. ERECT SIGNS PER ROADWAY STANDARD DRAWING 1110.01. PAYMENT FOR WOOD POSTS, 3LB STEEL U-CHANNEL AND SQUARE STEEL TUBING POSTS WITH SIGNS WILL BE MADE ACCORDING TO STANDARD SPECIFICATION "WORK ZONE SIGNS" SECTION 1110.
- WHEN NECESSARY, USE SPLICING IN ACCORDANCE WITH ROADWAY STANDARD DRAWING NO. 1110.01. REMOVE ENTIRE POST WHEN REMOVING SIGNS WITH SPLICED POSTS.
- DO NOT BACK BRACE SIGN SUPPORTS.

HNTB HNTB NORTH CAROLINA, P.C.
343 E. Six Forks Rd., Suite 200
Raleigh, North Carolina 27609

APPROVED: *Scott A. Yarley* DATE: 9/18/04

ADVANCED WORK ZONE WARNING SIGNS FOR FREEWAYS (4 LANES OR GREATER)

SCALE: NONE		REVISIONS
DATE: 8/03		
DWG. BY: JI		
DESIGN BY: JI		
REVIEWED BY:		