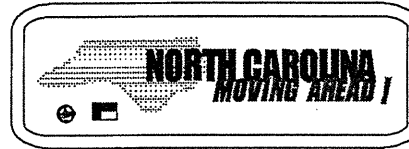


# TWO LANE, TWO WAY WORK ZONE (L-LINES)

POSTED SPEED LIMIT (M.P.H.)	RECOMMENDED MINIMUM SIGN SPACING
P.S.L. ≤ 50	350'
P.S.L. ≥ 55	500'

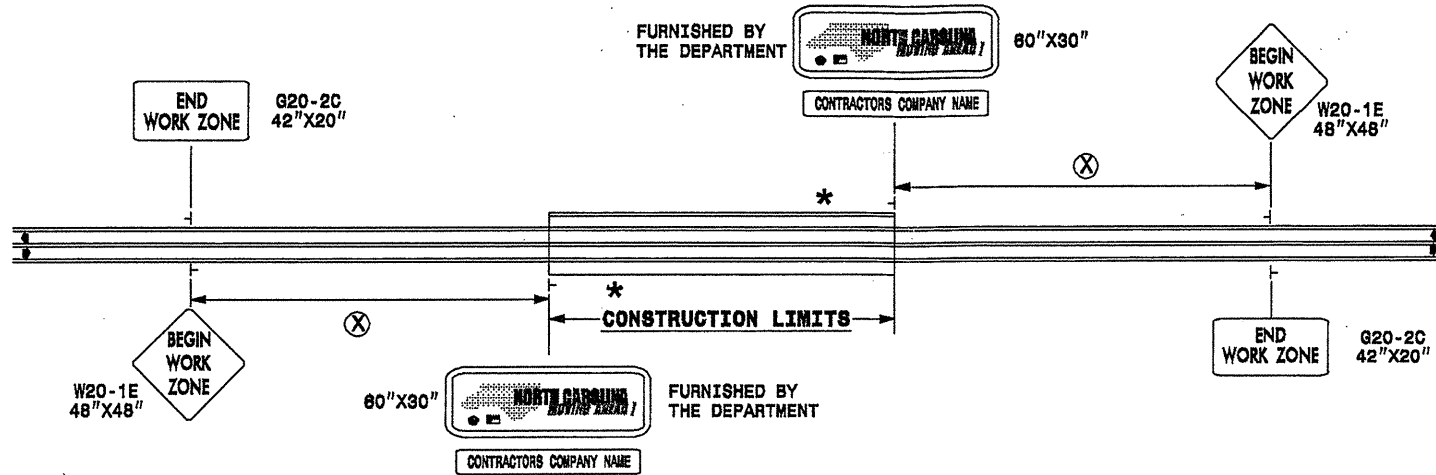
FURNISHED BY THE DEPARTMENT



60"X30"

CONTRACTORS COMPANY NAME

60" Max. X 12"

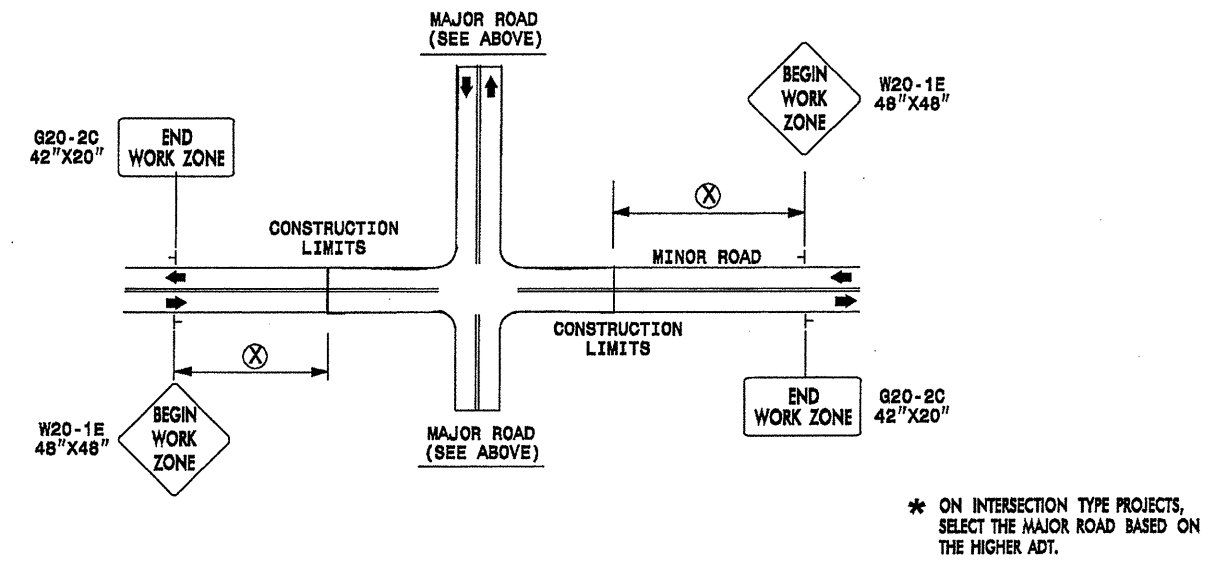


\* **WORK ZONE NEXT XX MILES** G20-1 42"X20"

\* THIS SIGN TO BE USED ON PROJECTS LONGER THAN 2 MILES. THE NUMBER DISPLAYED ON THE SIGN IS TO BE A WHOLE NUMBER ROUNDED UP TO THE NEXT MILE. IT'S TO BE LOCATED 1,500 FEET INSIDE OF THE CONSTRUCTION LIMITS.

STATE OF NORTH CAROLINA  
DEPT. OF TRANSPORTATION  
DIVISION OF HIGHWAYS  
RALEIGH, N.C.

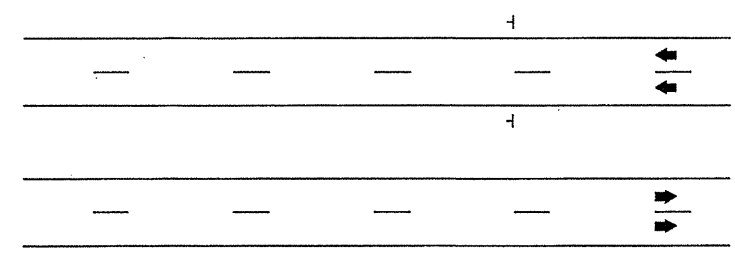
# INTERSECTIONS (-Y- LINES)



# FREEWAYS/INTERSTATES

DUAL MOUNT "BEGIN WORK ZONE" SIGNS 1,000' IN ADVANCE OF PROJECT LIMITS

DUAL MOUNT "MOVING AHEAD" SIGNS 500' IN ADVANCE OF PROJECT LIMITS



# GENERAL NOTES

SEE SPECIAL PROVISIONS FOR "NORTH CAROLINA MOVING AHEAD" REQUIREMENTS.

**LEGEND**

⊥	STATIONARY SIGN
←	DIRECTION OF TRAFFIC FLOW

DETAIL DRAWING FOR ADVANCE  
WARNING WORK ZONE SIGNS

SHEET 1 OF 1

ADVANCE WARNING WORK ZONE SIGNS FOR "MOVING AHEAD"

SCALE: NONE		REVISIONS
DATE: 07/03		
DWG. BY: JSK		
DESIGN BY: JSK		
REVIEWED BY: SK		