

STATE	PROJECT NO.	SHEET NO.	SHEET NO.
N.C.	7CR.10681.3, ETC.	12	20

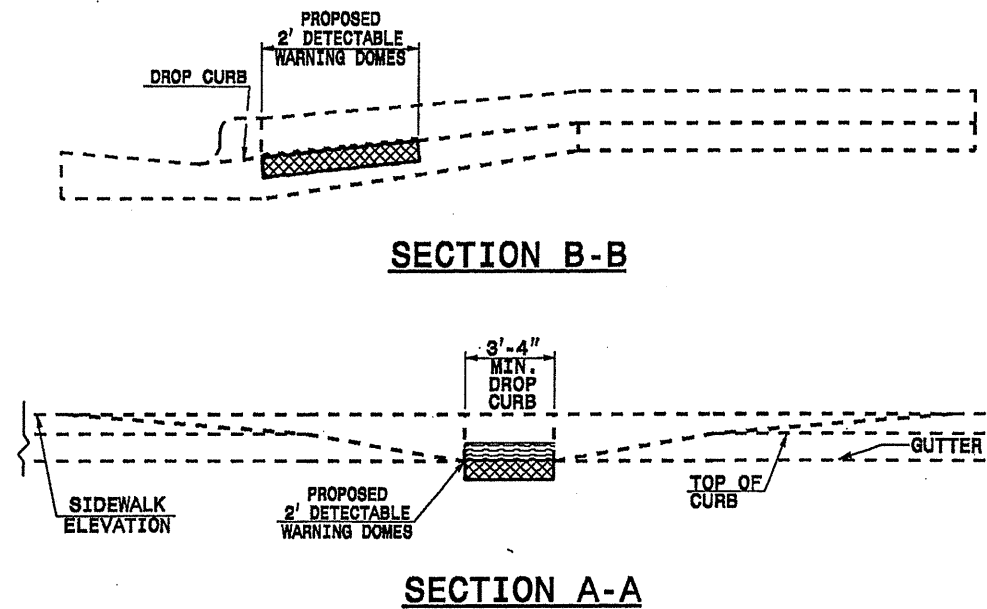
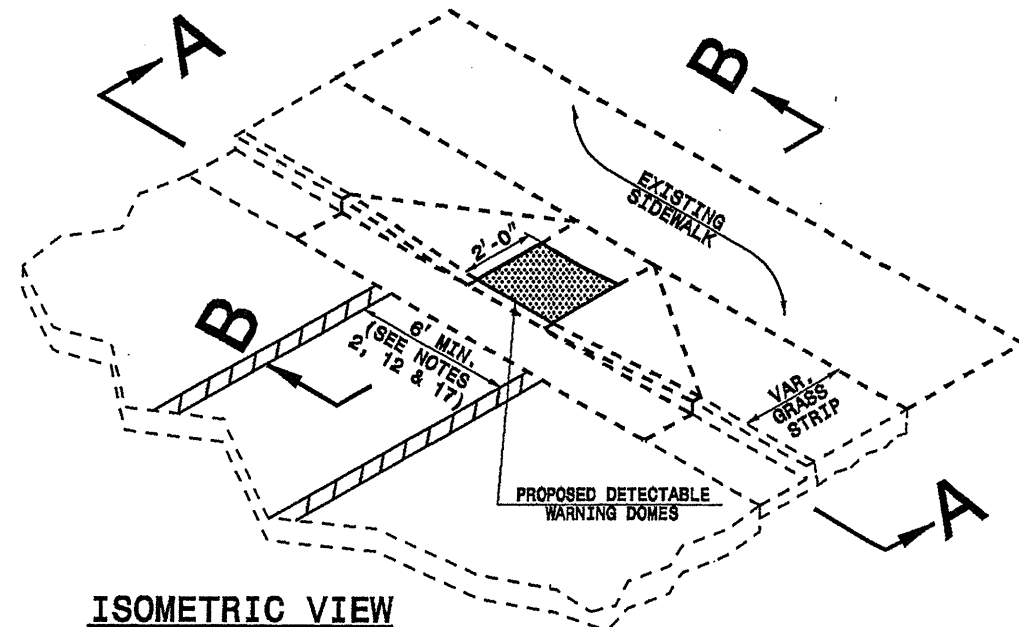
7CR.10681.3  
7CR.20171.3  
7CR.20681.3  
7CR.306802.3  
7CR.306811.3

STATE OF  
NORTH CAROLINA  
DEPT. OF TRANSPORTATION  
DIVISION OF HIGHWAYS  
RALEIGH, N.C.

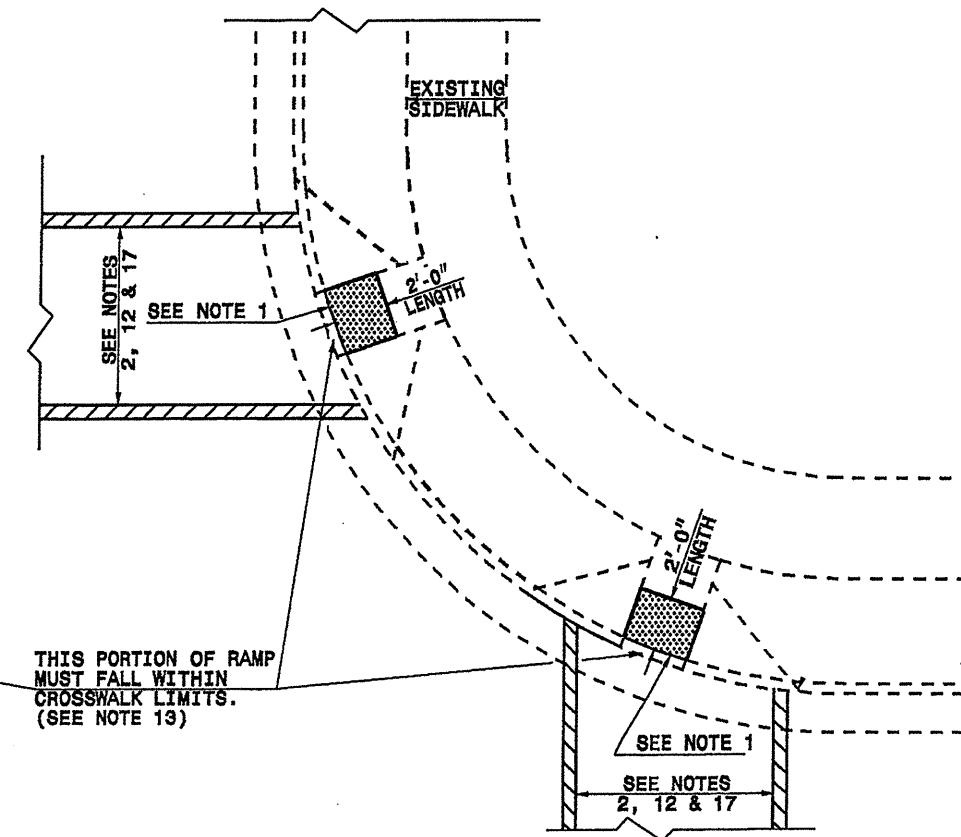
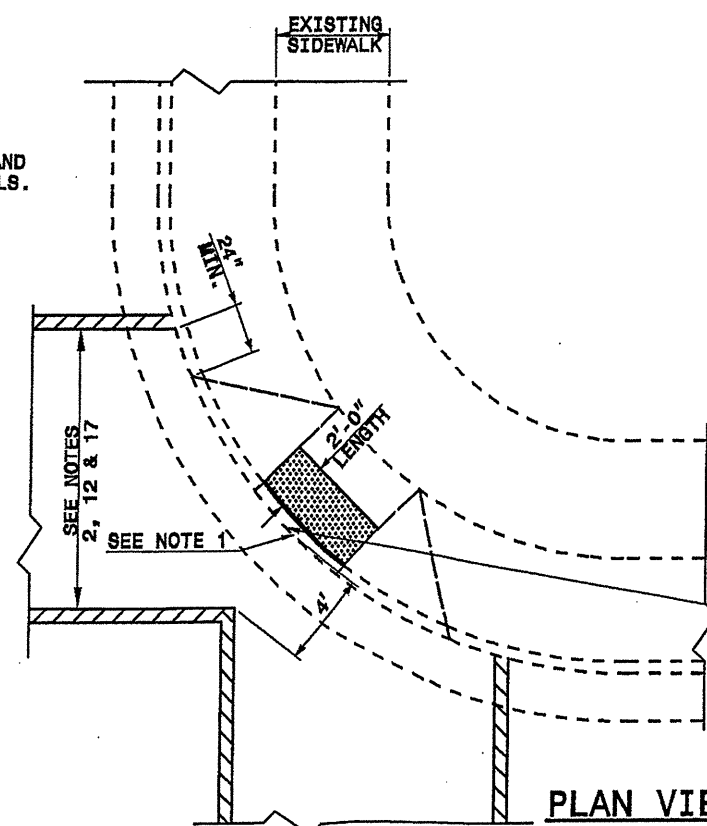
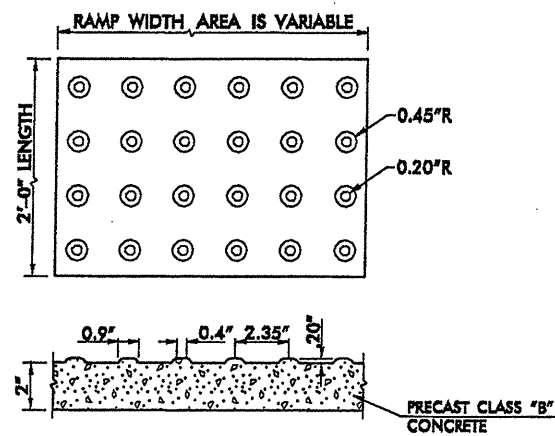
ENGLISH DETAIL DRAWING FOR  
RETROFITTING DETECTABLE WARNING DOMES  
ONTO EXISTING WHEELCHAIR RAMP  
CURB CUT

STATE OF  
NORTH CAROLINA  
DEPT. OF TRANSPORTATION  
DIVISION OF HIGHWAYS  
RALEIGH, N.C.

ENGLISH DETAIL DRAWING FOR  
RETROFITTING DETECTABLE WARNING DOMES  
ONTO EXISTING WHEELCHAIR RAMP  
CURB CUT



1. DETECTABLE WARNING DOMES SHALL COVER 2'-0" LENGTH AND FULL WIDTH OF THE RAMP FLOOR AS SHOWN ON THE DETAILS.
2. THE RAMP MAY BE YELLOW IN COLOR OR ANY COLOR WITH A 70% CONTRAST RATIO.



21-SEP-2004 10:17  
esur\Facings\10-Change 2005\Contract Package\WheelChair\_1.dgn