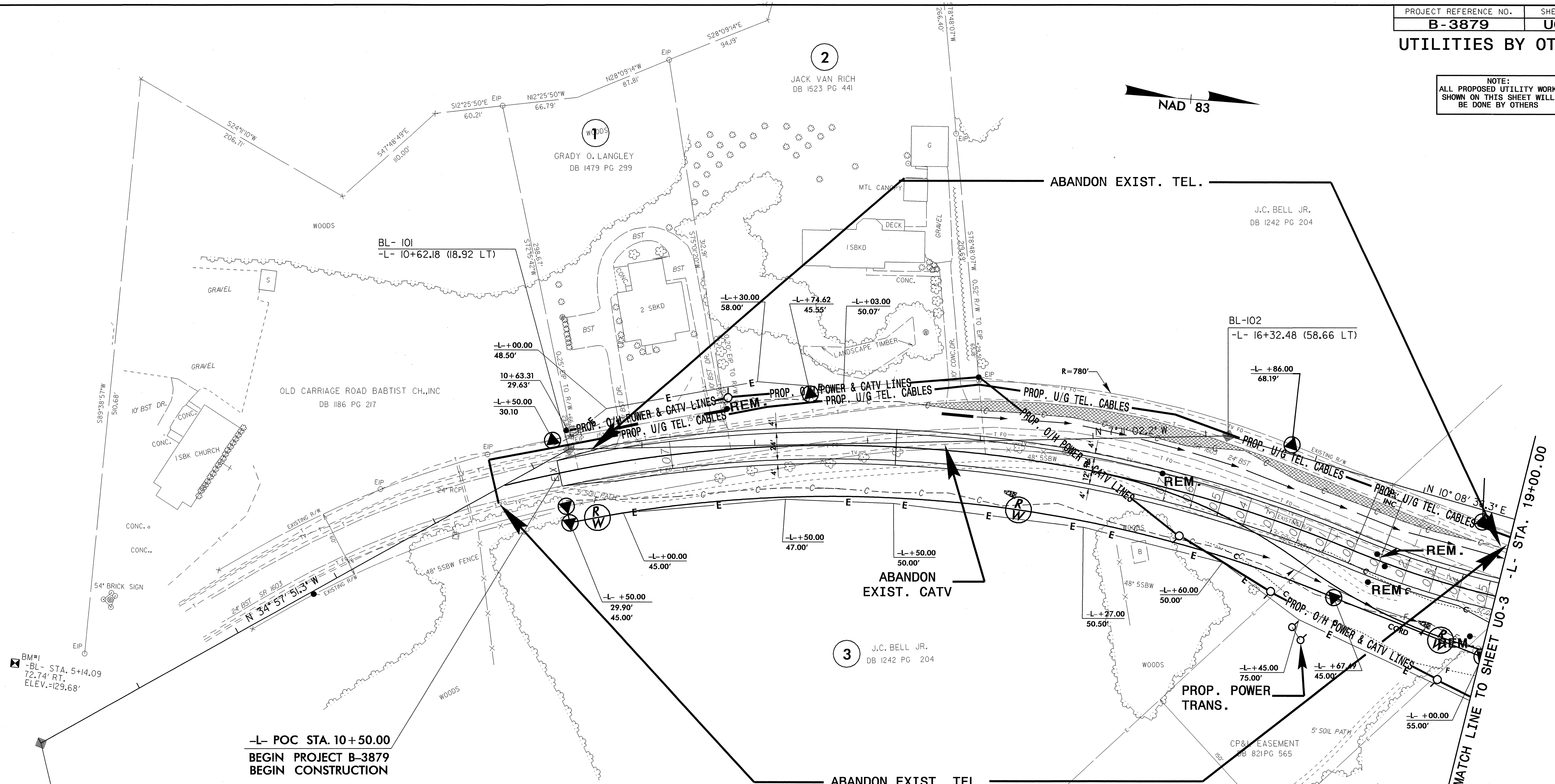
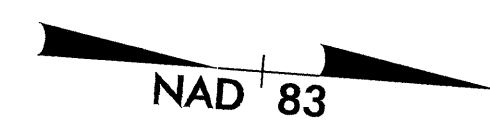


NOTE:
ALL PROPOSED UTILITY WORK
SHOWN ON THIS SHEET WILL
BE DONE BY OTHERS



-L- POC STA. 10+50.00
BEGIN PROJECT B-3879
BEGIN CONSTRUCTION

GPS B3879-2 5+00.00 POT

DATUM DESCRIPTION

THE LOCALIZED COORDINATE SYSTEM DEVELOPED FOR THIS PROJECT IS BASED ON THE STATE PLANE COORDINATES ESTABLISHED BY NCDOT FOR MONUMENT "GPS B3879-3" WITH NAD 1983/95 STATE PLANE GRID COORDINATES OF NORTHING: 816865.302(ft) EASTING: 2324903.841(ft) THE AVERAGE COMBINED GRID FACTOR USED ON THIS PROJECT (GROUND TO GRID) IS: 0.99995431 THE N.C. LAMBERT GRID BEARING AND LOCALIZED HORIZONTAL GROUND DISTANCE FROM "GPS B3879-3" TO -L- STATION 10+50.00 IS S 5°01'06.34" E 1,492.35 FT ALL LINEAR DIMENSIONS ARE LOCALIZED HORIZONTAL DISTANCES VERTICAL DATUM USED IS NAVD 88

LEGEND

--- -L- SLOPE STAKE
..... -DET- SLOPE STAKE

3
J.C. BELL JR.
DB I242 PG 204

NOTE: SEE SHEET 7 FOR -L- PROFILE.
SEE SHEET 6 FOR DETOUR.

08-JUN-2004 15:56
C:\Users\jgibson\Documents\Projects\B3879\4_UO2.psh
jgibson -A- 102514319