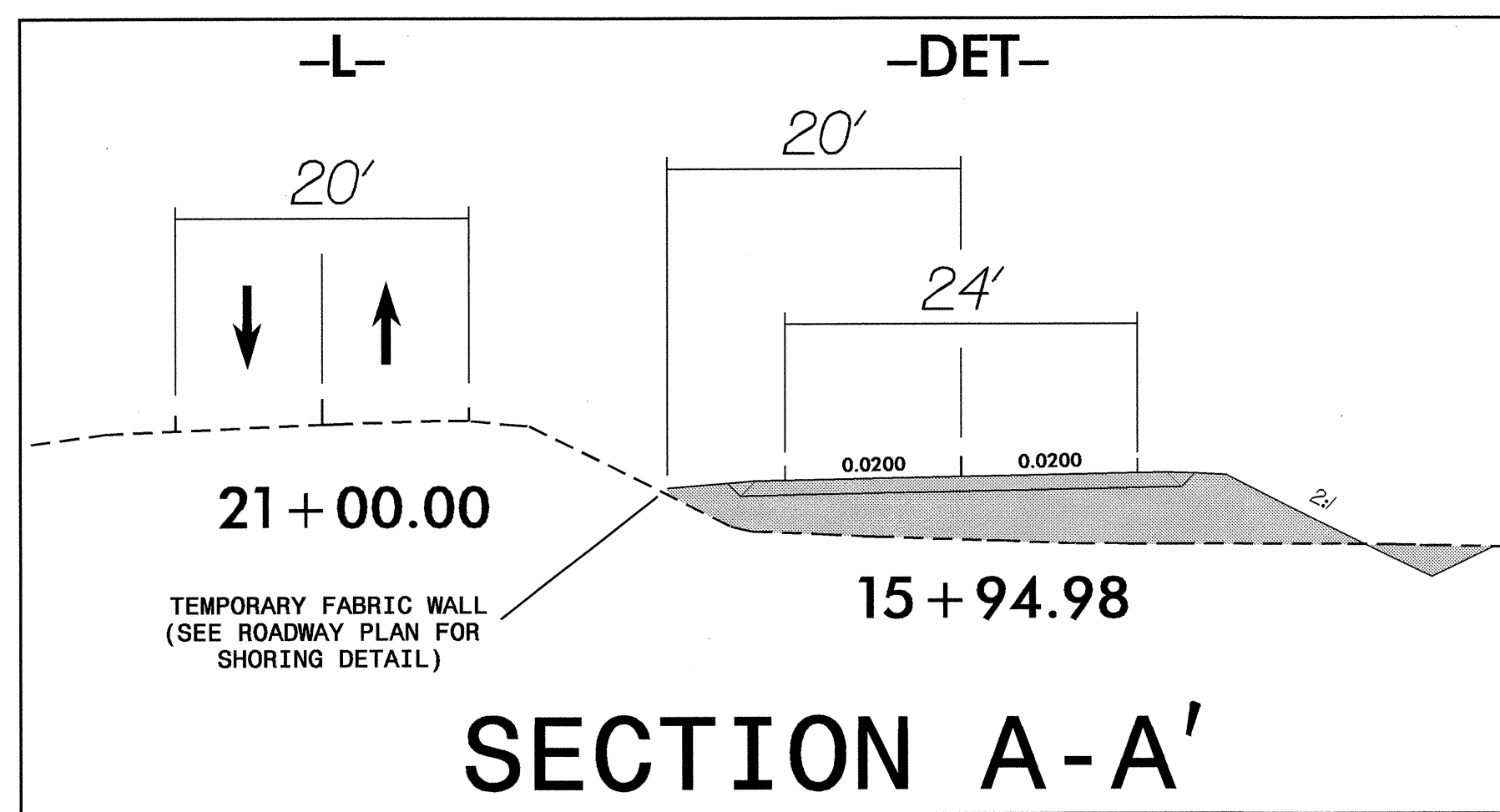
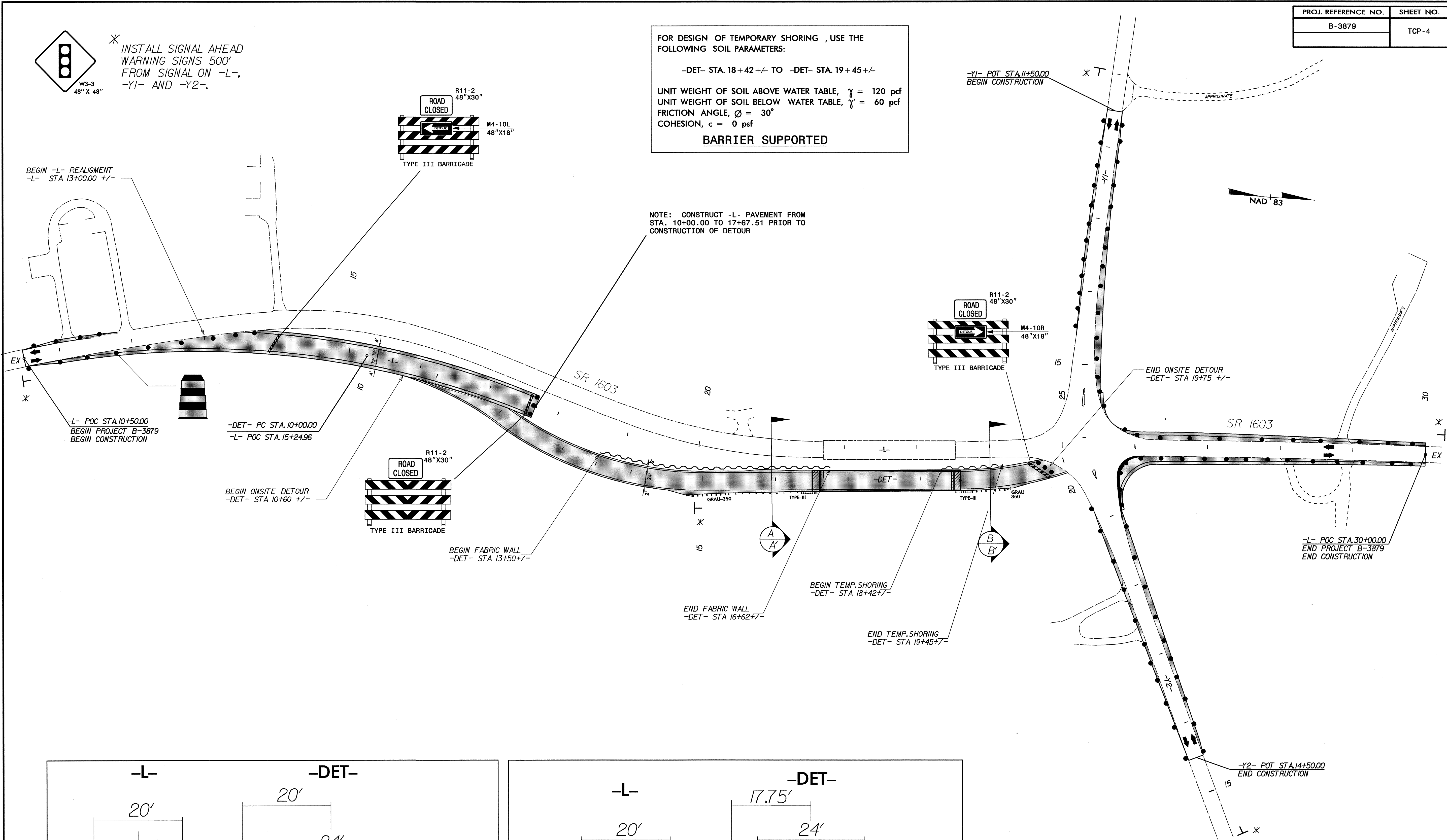


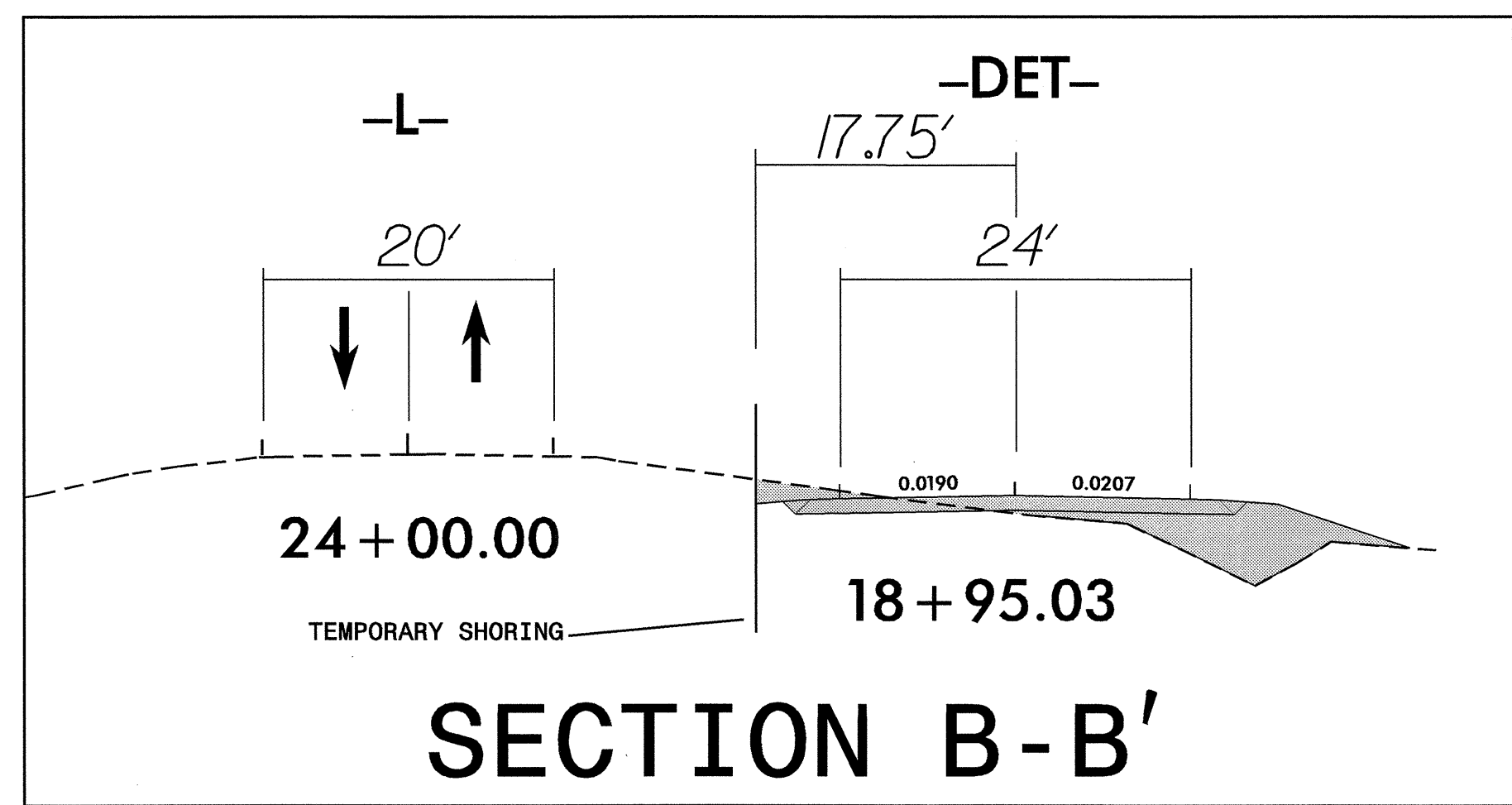
* INSTALL SIGNAL AHEAD
WARNING SIGNS 500'
FROM SIGNAL ON -L-,
-Y1- AND -Y2-.

FOR DESIGN OF TEMPORARY SHORING, USE THE
FOLLOWING SOIL PARAMETERS:
-DET- STA. 18+42+/- TO -DET- STA. 19+45+/-
UNIT WEIGHT OF SOIL ABOVE WATER TABLE, $\gamma = 120$ pcf
UNIT WEIGHT OF SOIL BELOW WATER TABLE, $\gamma' = 60$ pcf
FRICTION ANGLE, $\phi = 30^\circ$
COHESION, $c = 0$ psf
BARRIER SUPPORTED

NOTE: CONSTRUCT -L- PAVEMENT FROM
STA. 10+00.00 TO 17+67.51 PRIOR TO
CONSTRUCTION OF DETOUR



SECTION A-A'



SECTION B-B'

APPROVED: <i>J.W. Woolard</i> DATE: 6/25/04	PHASE I DETAIL	
	SCALE: NONE	
	DATE: JAN 2004	
	DWG. BY: MRM	
	DESIGN BY: MRM	
REVIEWED BY: JWW	REVISIONS	

24-JUN-2004 08:11
 i:\TCP\B3879_TCP_Top4.phs1.dgn
 mmamriquez AT TEL095141