

SURVEY CONTROL SHEET B-3879

PROJECT REFERENCE NO. B-3879	SHEET NO. 1-C
Location and Surveys	

CONTROL DATA

BL	POINT	DESC.	NORTH	EAST	ELEVATION	L STATION	OFFSET
2		GPS B3879-2	814946.1320	2325319.3970	126.97	OUTSIDE PROJECT LIMITS	
101		BL-101	815384.7690	2325012.6690	122.10	13+21.98	18.98 LT
102		BL-102	815964.6670	2324939.5760	120.40	19+05.18	18.13 LT
103		BL-103	816474.5570	2325030.8000	121.37	24+31.81	16.54 LT
3		GPS B3879-3	816865.3020	2324903.8410	119.75	28+33.92	101.95 LT
104		BL-104	817026.8050	2324971.7380	127.63	29+87.37	17.56 LT
105		BL-105	817543.7790	2324974.2910	160.99	35+03.24	18.55 RT

T1	POINT	DESC.	NORTH	EAST	ELEVATION	L STATION	OFFSET
201		T1-201	816598.3260	2324811.7540	111.89	25+78.05	221.49 LT
202		T1-202	816541.6020	2324939.1450	110.92	25+08.30	100.73 LT
A103		BL-103	816474.5570	2325030.8000	121.37	24+31.81	16.54 LT
203		T1-203	816648.6120	2325075.6890	113.47	26+00.43	46.26 RT
204		T1-204	816608.5590	2325180.0110	111.61	25+49.67	145.82 RT
205		T1-205	816623.5110	2325385.9390	111.61	25+42.98	352.18 RT

BY	POINT	DESC.	NORTH	EAST	ELEVATION	Y STATION	OFFSET
4		GPS B3879-4	816822.6050	2324382.6870	119.78	OUTSIDE PROJECT LIMITS	
A3		GPS B3879-3	816865.3020	2324903.8410	119.75	15+14.06	29.01 LT

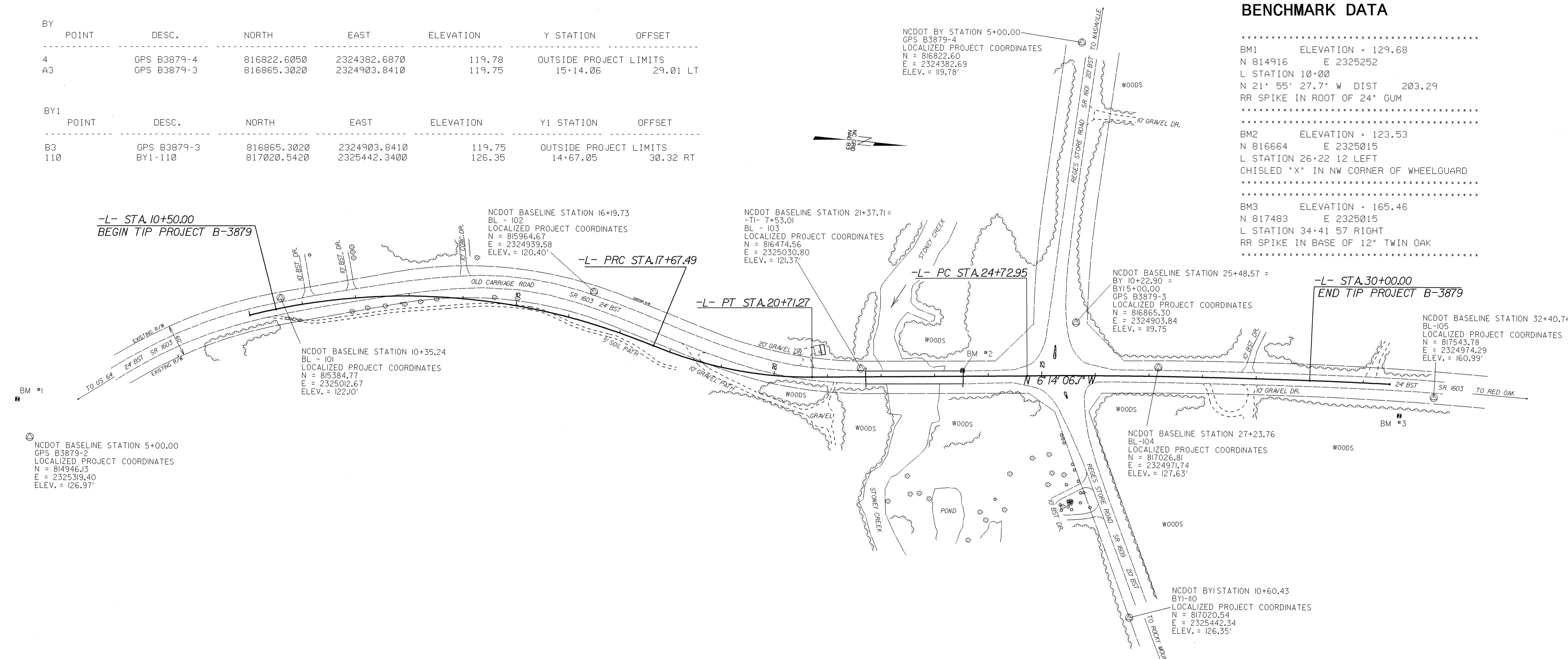
BY1	POINT	DESC.	NORTH	EAST	ELEVATION	Y1 STATION	OFFSET
B3		GPS B3879-3	816865.3020	2324903.8410	119.75	OUTSIDE PROJECT LIMITS	
110		BY1-110	817020.5420	2325442.3400	126.35	14+67.05	30.32 RT

BENCHMARK DATA

BM1	ELEVATION = 129.68
N 814916	E 2325252
L STATION 10+00	
N 21° 55' 27.7" W	DIST 203.29
RR SPIKE IN ROOT OF 24" GUM	

BM2	ELEVATION = 123.53
N 816664	E 2325015
L STATION 26+22 12 LEFT	
CHISLED 'X' IN NW CORNER OF WHEELGUARD	

BM3	ELEVATION = 165.46
N 817483	E 2325015
L STATION 34+41 57 RIGHT	
RR SPIKE IN BASE OF 12" TWIN OAK	



DATUM DESCRIPTION

THE LOCALIZED COORDINATE SYSTEM DEVELOPED FOR THIS PROJECT IS BASED ON THE STATE PLANE COORDINATES ESTABLISHED BY NCDOT FOR MONUMENT "GPS B3879-3" WITH NAD 1983/95 STATE PLANE GRID COORDINATES OF NORTHING: 816865.302(11) EASTING: 2324903.841(11) THE AVERAGE COMBINED GRID FACTOR USED ON THIS PROJECT (GROUND TO GRID) IS: 0.99995431 THE N.C. LAMBERT GRID BEARING AND LOCALIZED HORIZONTAL GROUND DISTANCE FROM "GPS B3879-3" TO L- 10+50.00 IS S05°01'06.34"E 1,492.35 FT ALL LINEAR DIMENSIONS ARE LOCALIZED HORIZONTAL DISTANCES VERTICAL DATUM USED IS NAVD 88

NOTES:

THE CONTROL DATA FOR THIS PROJECT CAN BE FOUND ELECTRONICALLY BY SELECTING PROJECT CONTROL DATA AT:
[HTTP://WWW.DOH.DOT.STATE.NC.US/PRECONSTRUCT/HIGHWAY/LOCATION/PROJECT](http://www.doh.dot.state.nc.us/preconstruct/highway/location/project)
 FILE : B3879_LS_CONTROL_040123.TXT
 PROJECT CONTROL ESTABLISHED USING GLOBAL POSITIONING SYSTEM. SITE CALIBRATION INFORMATION HAS NOT BEEN PROVIDED FOR THIS PROJECT. IF FURTHER INFORMATION IS NEEDED, PLEASE CONTACT THE LOCATION AND SURVEYS UNIT.
 INDICATES GEODETIC CONTROL MONUMENTS USED OR SET FOR HORIZONTAL PROJECT CONTROL BY THE NCDOT LOCATION AND SURVEYS UNIT.
 PROJECT CONTROL ESTABLISHED USING GLOBAL POSITIONING SYSTEM. CONTROL NETWORK FOR B3879 ESTABLISHED USING STATIC GPS FROM NCGS HARN MONUMENTATION.

NOTE: DRAWING NOT TO SCALE

JL-JUN-2004 10:27
 R:\proj\B3879_1\jenniferevans rd-09occe34
 jenniferevans rd-09occe34