

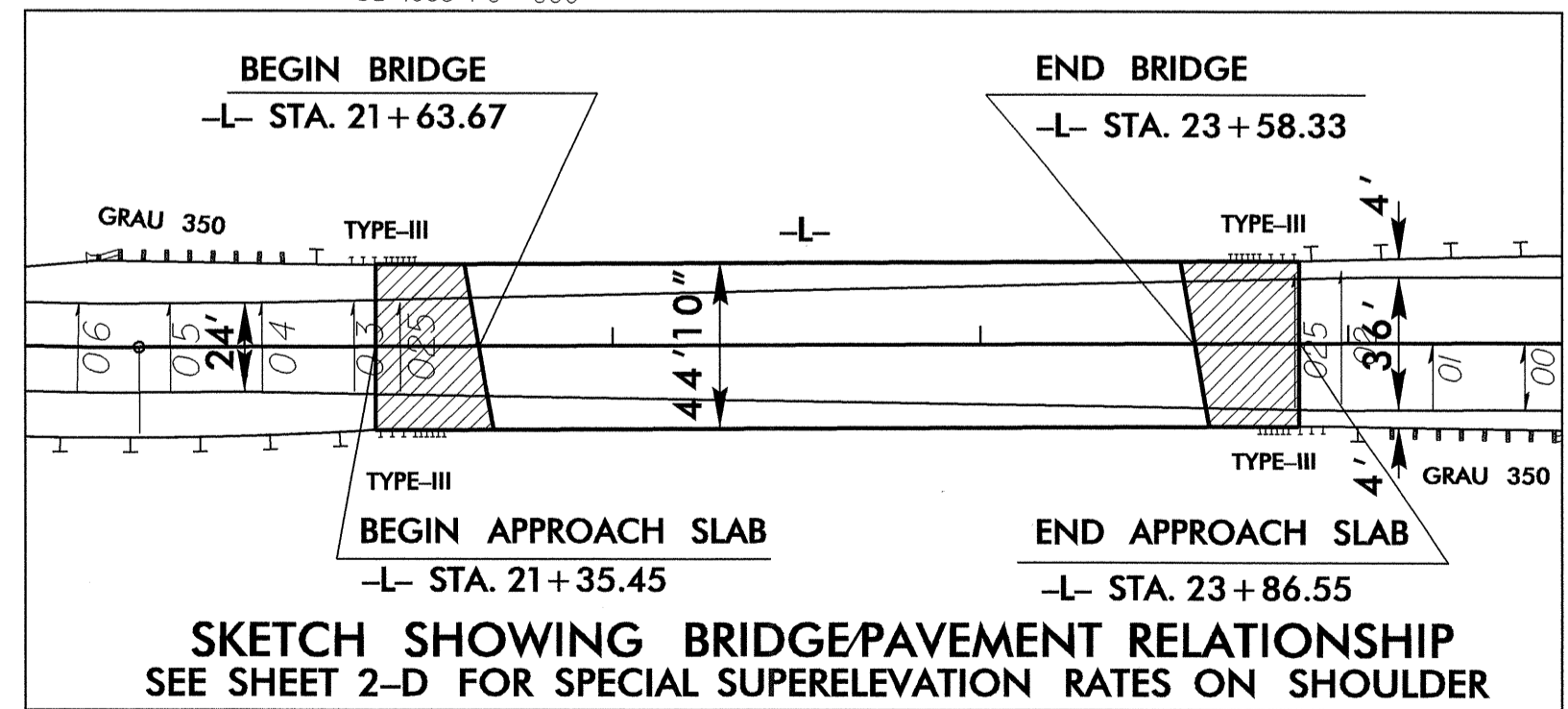
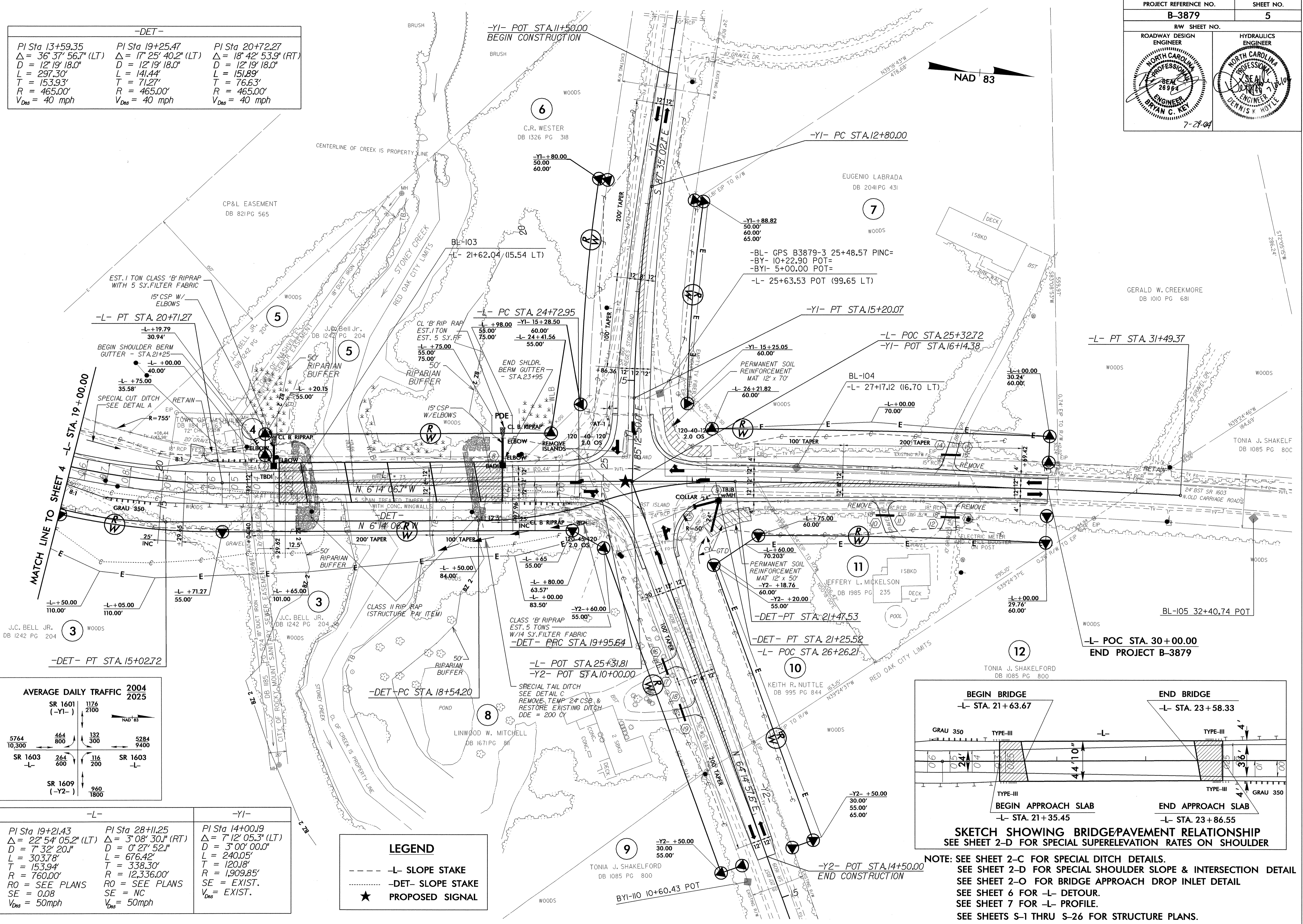
-DET-		
PI Sta 13+59.35	PI Sta 19+25.47	PI Sta 20+72.27
$\Delta = 36^{\circ} 37' 56.7''$ (LT)	$\Delta = 17^{\circ} 25' 40.2''$ (LT)	$\Delta = 18^{\circ} 42' 53.9''$ (RT)
$D = 12^{\circ} 19' 18.0''$	$D = 12^{\circ} 19' 18.0''$	$D = 12^{\circ} 19' 18.0''$
$L = 297.30'$	$L = 141.44'$	$L = 151.89'$
$T = 153.93'$	$T = 71.27'$	$T = 76.63'$
$R = 465.00'$	$R = 465.00'$	$R = 465.00'$
$V_{Des} = 40$ mph	$V_{Des} = 40$ mph	$V_{Des} = 40$ mph

AVERAGE DAILY TRAFFIC	
2004	2025
SR 1601 (-Y1-)	1174 / 2100
SR 1603 (-L-)	264 / 600
SR 1609 (-Y2-)	960 / 1800

-L-		-Y1-	
PI Sta 19+21.43	PI Sta 28+11.25	PI Sta 14+00.19	PI Sta 14+00.19
$\Delta = 22^{\circ} 54' 05.2''$ (LT)	$\Delta = 3^{\circ} 08' 30.1''$ (RT)	$\Delta = 7^{\circ} 12' 05.3''$ (LT)	$\Delta = 7^{\circ} 12' 05.3''$ (LT)
$D = 7^{\circ} 32' 20.1''$	$D = 0^{\circ} 27' 52.1''$	$D = 3^{\circ} 00' 00.0''$	$D = 3^{\circ} 00' 00.0''$
$L = 303.78'$	$L = 676.42'$	$L = 240.05'$	$L = 240.05'$
$T = 153.94'$	$T = 338.30'$	$T = 120.18'$	$T = 120.18'$
$R = 760.00'$	$R = 12,336.00'$	$R = 1,909.85'$	$R = 1,909.85'$
RO = SEE PLANS	RO = SEE PLANS	SE = EXIST.	SE = EXIST.
SE = 0.08	SE = NC	$V_{Des} = EXIST.$	$V_{Des} = EXIST.$
$V_{Des} = 50$ mph	$V_{Des} = 50$ mph		

LEGEND

- - - - -L- SLOPE STAKE
--DET- SLOPE STAKE
- ★ PROPOSED SIGNAL



NOTE: SEE SHEET 2-C FOR SPECIAL DITCH DETAILS.
 SEE SHEET 2-D FOR SPECIAL SHOULDER SLOPE & INTERSECTION DETAIL
 SEE SHEET 2-O FOR BRIDGE APPROACH DROP INLET DETAIL
 SEE SHEET 6 FOR -L- DETOUR.
 SEE SHEET 7 FOR -L- PROFILE.
 SEE SHEETS S-1 THRU S-26 FOR STRUCTURE PLANS.

8/17/99
26-JUL-2004 07:45
P:\Proj\83878\psh-5 BCKey.dwg