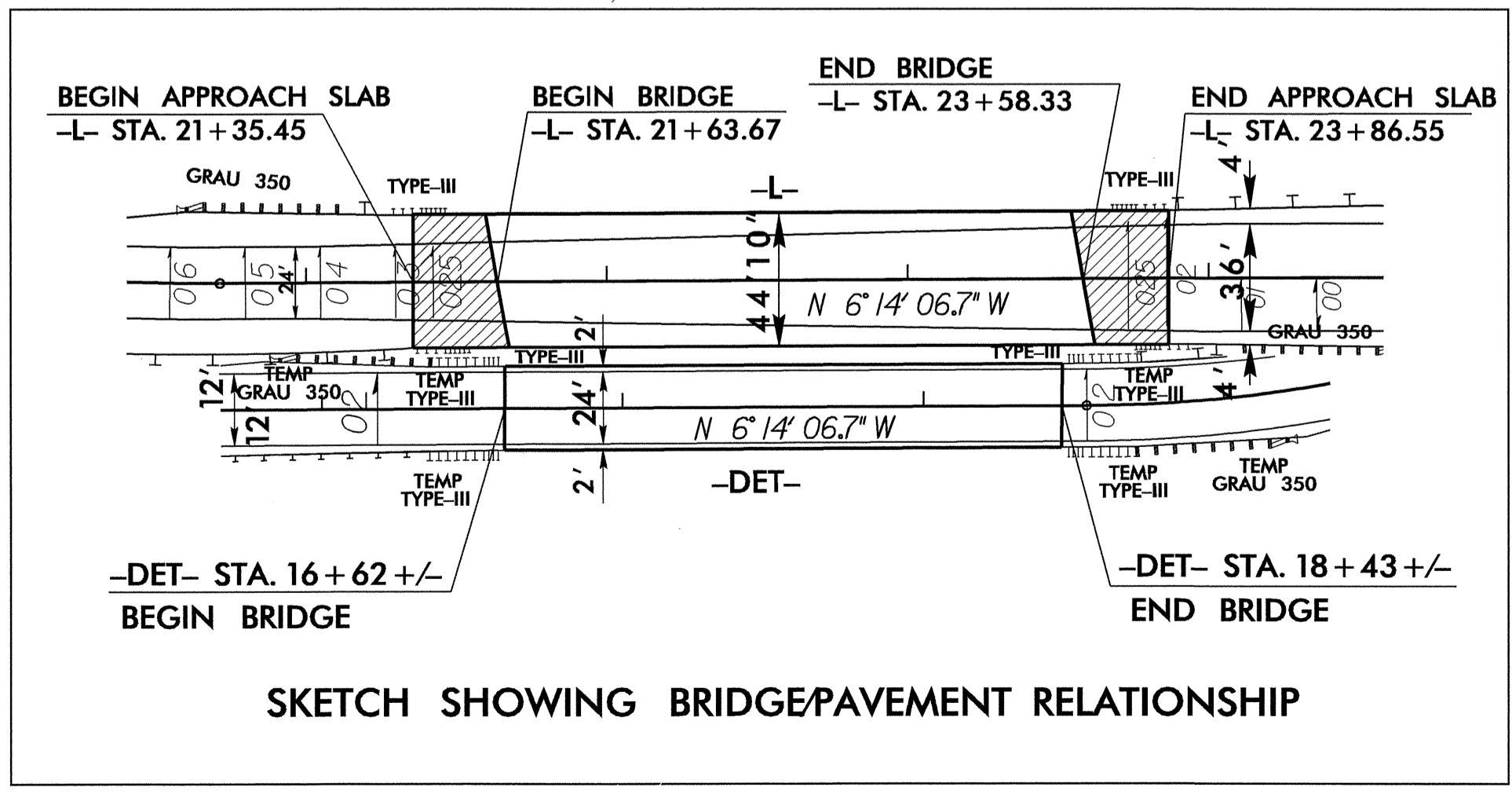
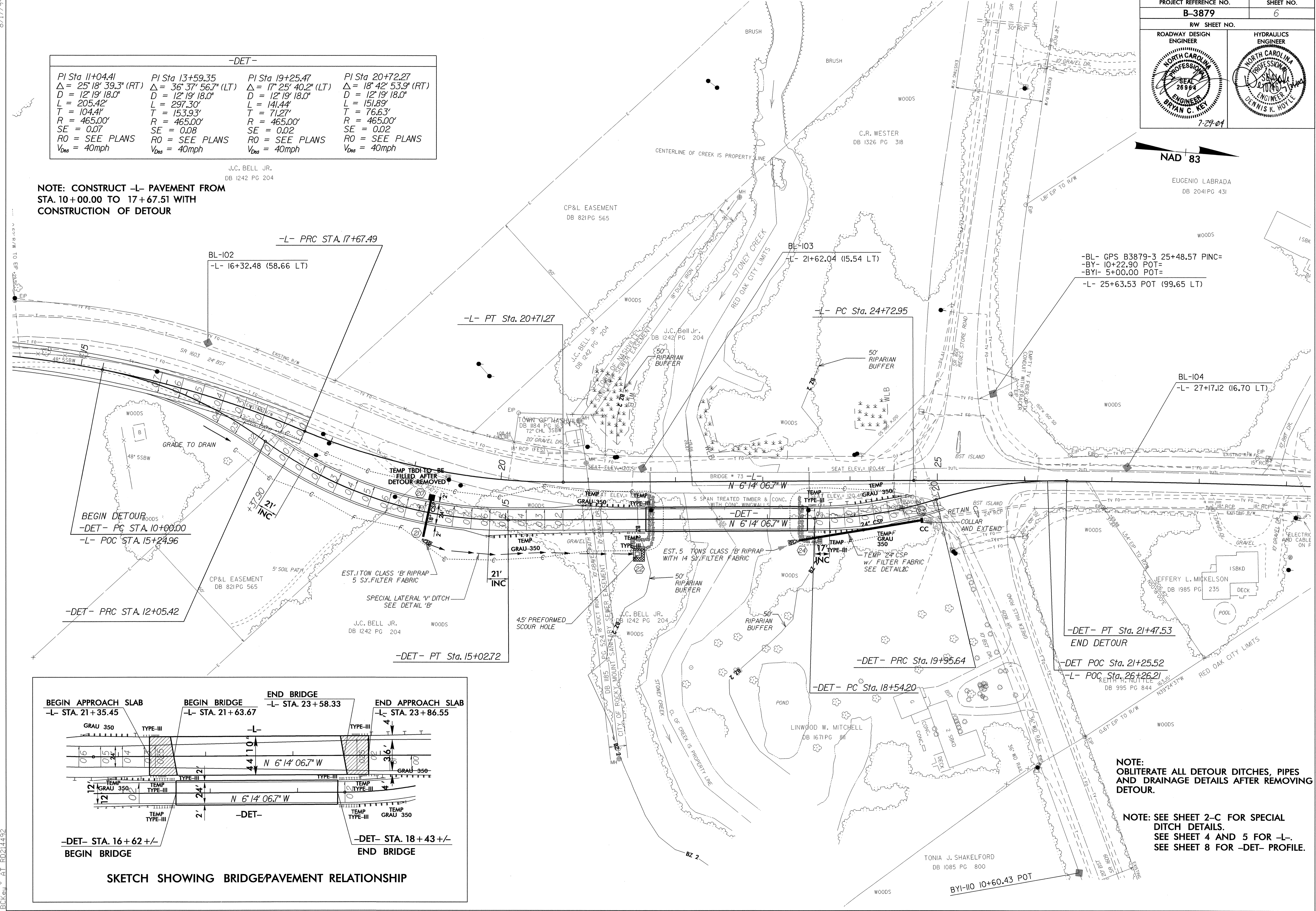


-DET-			
PI Sta 11+04.41 Δ = 25' 18" 39.3" (RT) D = 12' 19" 18.0" L = 205.42' T = 104.41' R = 465.00' SE = 0.07 RO = SEE PLANS V _{Des} = 40mph	PI Sta 13+59.35 Δ = 36' 37" 56.7" (LT) D = 12' 19" 18.0" L = 297.30' T = 153.93' R = 465.00' SE = 0.08 RO = SEE PLANS V _{Des} = 40mph	PI Sta 19+25.47 Δ = 17' 25" 40.2" (LT) D = 12' 19" 18.0" L = 141.44' T = 71.27' R = 465.00' SE = 0.02 RO = SEE PLANS V _{Des} = 40mph	PI Sta 20+72.27 Δ = 18' 42" 53.9" (RT) D = 12' 19" 18.0" L = 151.89' T = 76.63' R = 465.00' SE = 0.02 RO = SEE PLANS V _{Des} = 40mph

NOTE: CONSTRUCT -L- PAVEMENT FROM STA. 10+00.00 TO 17+67.51 WITH CONSTRUCTION OF DETOUR



-BL- GPS B3879-3 25+48.57 PINC=
-BY- 10+22.90 POT=
-BYI- 5+00.00 POT=
-L- 25+63.53 POT (99.65 LT)

-DET- PT Sta. 21+47.53
END DETOUR
-DET POC Sta. 21+25.52
-L- POC Sta. 26+26.21
DB 995 PG 844

NOTE: OBLITERATE ALL DETOUR DITCHES, PIPES AND DRAINAGE DETAILS AFTER REMOVING DETOUR.

NOTE: SEE SHEET 2-C FOR SPECIAL DITCH DETAILS. SEE SHEET 4 AND 5 FOR -L-. SEE SHEET 8 FOR -DET- PROFILE.

8/17/99
26-JUL-2004 07:45
RD214492 Monday July 26 2004 psh-6 BCKey AT RD214492