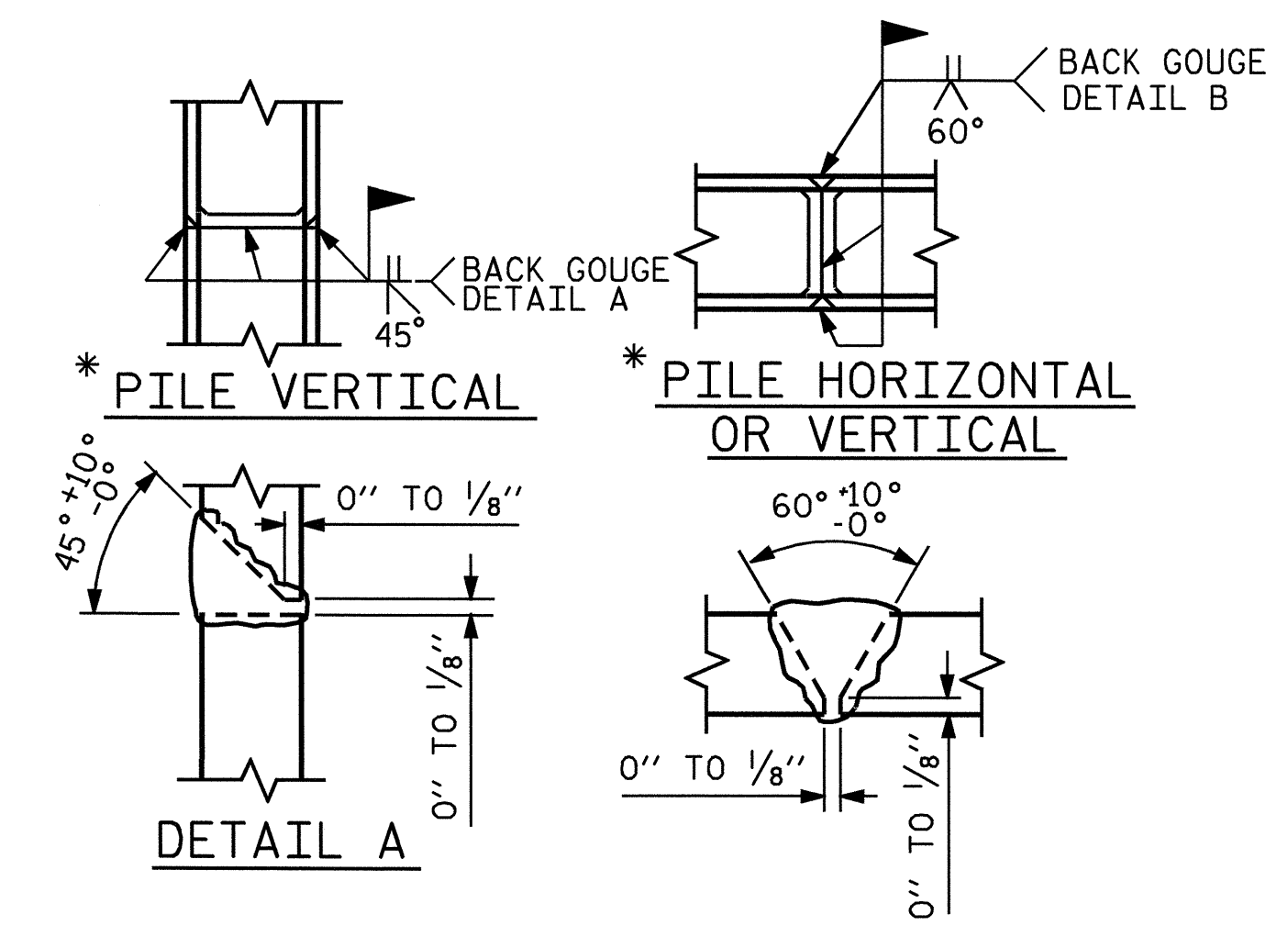
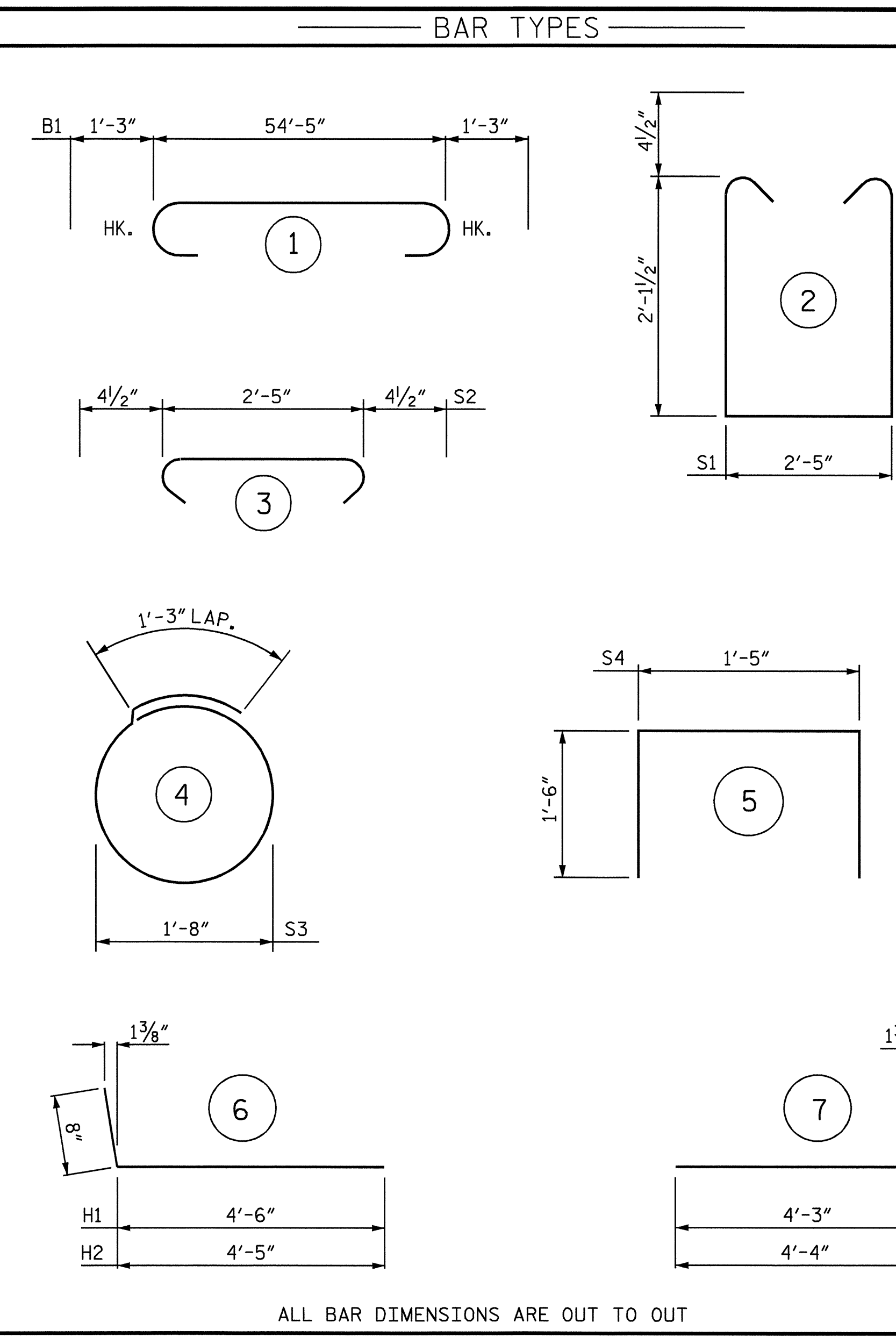


SECTION THRU CAP



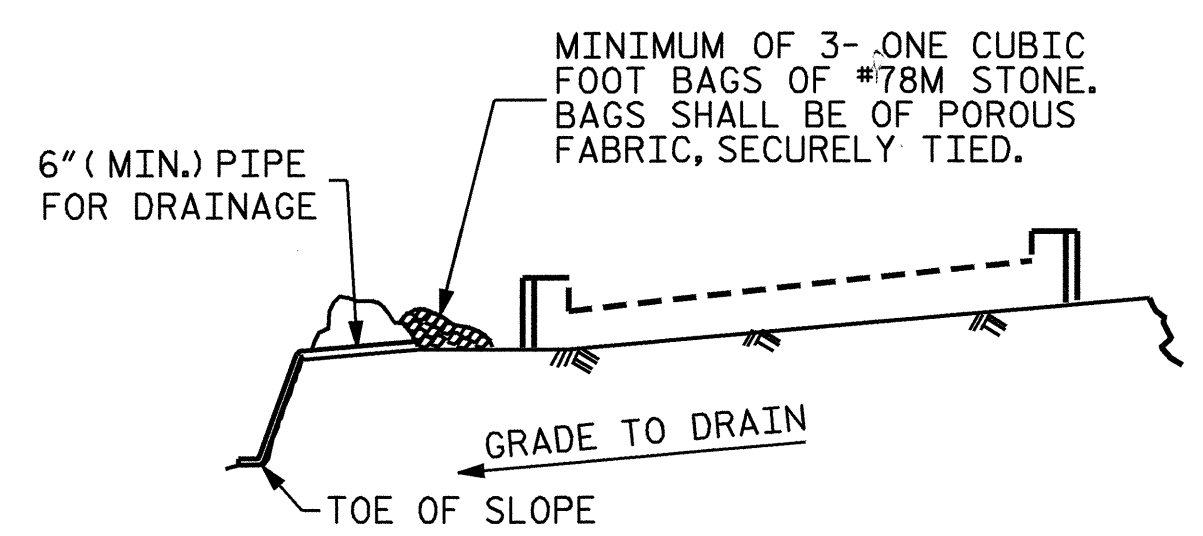
* POSITION OF PILE DURING WELDING. DETAIL B
PILE SPLICE DETAILS



BILL OF MATERIAL

BAR	NO.	SIZE	TYPE	LENGTH	WEIGHT
B1	8	#9	1	56'-11"	1548
B2	2	#5	STR	54'-7"	114
B3	8	#4	STR	28'-6"	152
B4	14	#4	STR	2'-5"	23
D1	32	#6	STR	1'-6"	72
H1	5	#4	6	5'-2"	17
H2	5	#4	6	5'-1"	17
H3	5	#4	7	4'-11"	16
H4	5	#4	7	5'-0"	17
K1	8	#4	STR	2'-7"	14
S1	56	#4	2	7'-5"	277
S2	56	#4	3	3'-2"	118
S3	20	#4	4	6'-6"	87
S4	4	#4	5	4'-5"	12
V1	18	#4	STR	4'-1"	49
V2	18	#4	STR	3'-10"	46
REINFORCING STEEL					= 2579 LBS.
CLASS 'A' CONCRETE BREAKDOWN					
POUR #1 CAP & LOWER PART OF WINGS					= 14.7 C.Y.
POUR #2 UPPER PART OF WINGS					= 0.8 C.Y.
POUR #3 LATERAL GUIDES					= 0.1 C.Y.
CLASS 'A' CONCRETE TOTAL					= 15.5 C.Y.

HP 12 x 53 STEEL PILES
NO. 10 LIN. FT. = 250 FT.

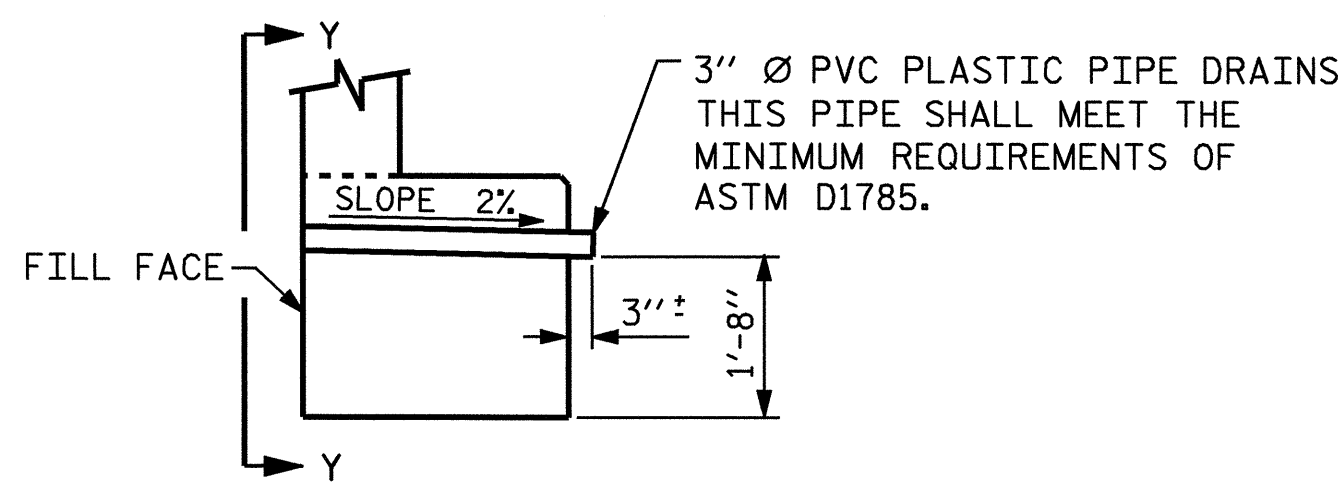


BAGGED STONE AND PIPE SHALL BE PLACED IMMEDIATELY AFTER COMPLETION OF END BENT EXCAVATION. PIPE MAY BE EITHER CONCRETE, CORRUGATED STEEL, CORRUGATED ALUMINUM ALLOY, OR CORRUGATED PLASTIC. PERFORATED PIPE WILL NOT BE ALLOWED.

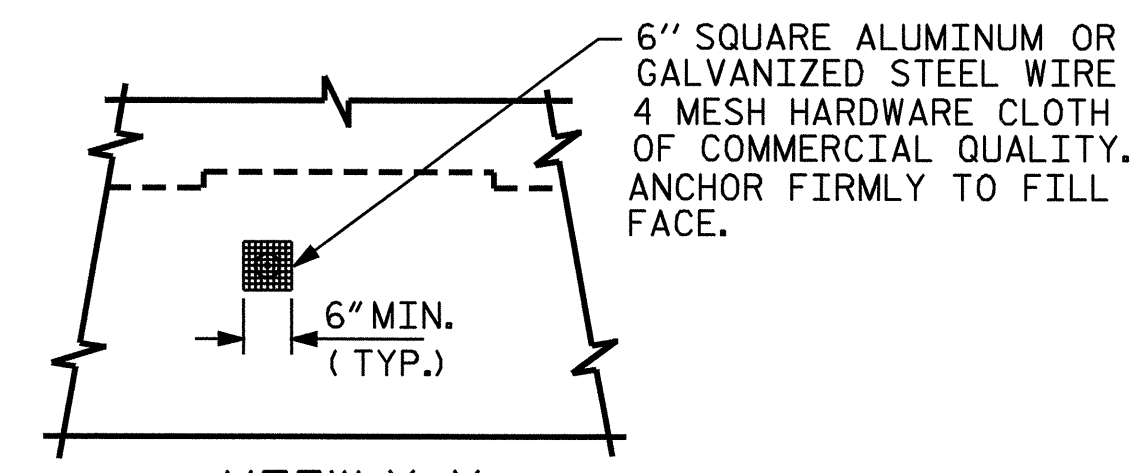
BAGGED STONE SHALL REMAIN IN PLACE UNTIL THE ENGINEER DIRECTS THAT IT BE REMOVED. THE CONTRACTOR SHALL REMOVE AND DISPOSE OF SILT ACCUMULATIONS AT BAGGED STONE WHEN SO DIRECTED BY THE ENGINEER. BAGS SHALL BE REMOVED AND REPLACED WHENEVER THE ENGINEER DETERMINES THAT THEY HAVE DETERIORATED AND LOST THEIR EFFECTIVENESS.

NO SEPARATE PAYMENT WILL BE MADE FOR THIS WORK AND THE ENTIRE COST OF THIS WORK SHALL BE INCLUDED IN THE UNIT CONTRACT PRICE BID FOR THE SEVERAL PAY ITEMS.

TEMPORARY DRAINAGE AT END BENT



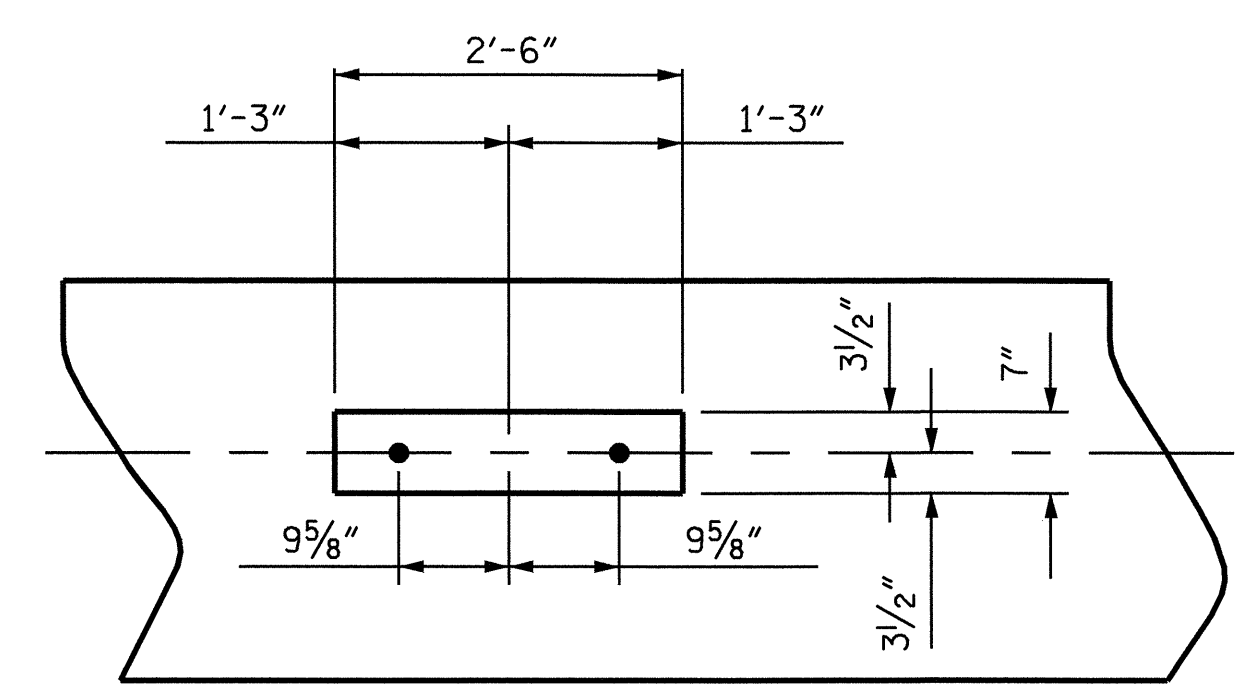
SECTION THRU CAP



VIEW Y-Y

NOTE: NO SEPARATE PAYMENT WILL BE MADE FOR FURNISHING AND INSTALLING THE PVC PLASTIC PIPE DRAINS, HARDWARE CLOTH AND FASTENERS. THE ENTIRE COST OF THIS WORK SHALL BE INCLUDED IN THE UNIT CONTRACT PRICE BID FOR THE SEVERAL PAY ITEMS.

PIPE DRAIN DETAILS



DETAIL A

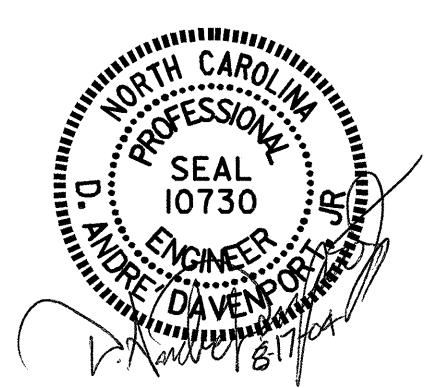
PROJECT NO. B-3879
NASH COUNTY
STATION: 22+61.00 -L-

SHEET 3 OF 3

STATE OF NORTH CAROLINA
DEPARTMENT OF TRANSPORTATION
RALEIGH

SUBSTRUCTURE
END BENT #1

REVISIONS						SHEET NO.
NO.	BY:	DATE:	NO.	BY:	DATE:	S-12
1			3			TOTAL SHEETS
2			4			26



DRAWN BY : J.B. WILSON DATE : 5/04
CHECKED BY : D.A. DAVENPORT DATE : 5/04