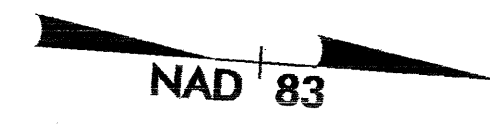
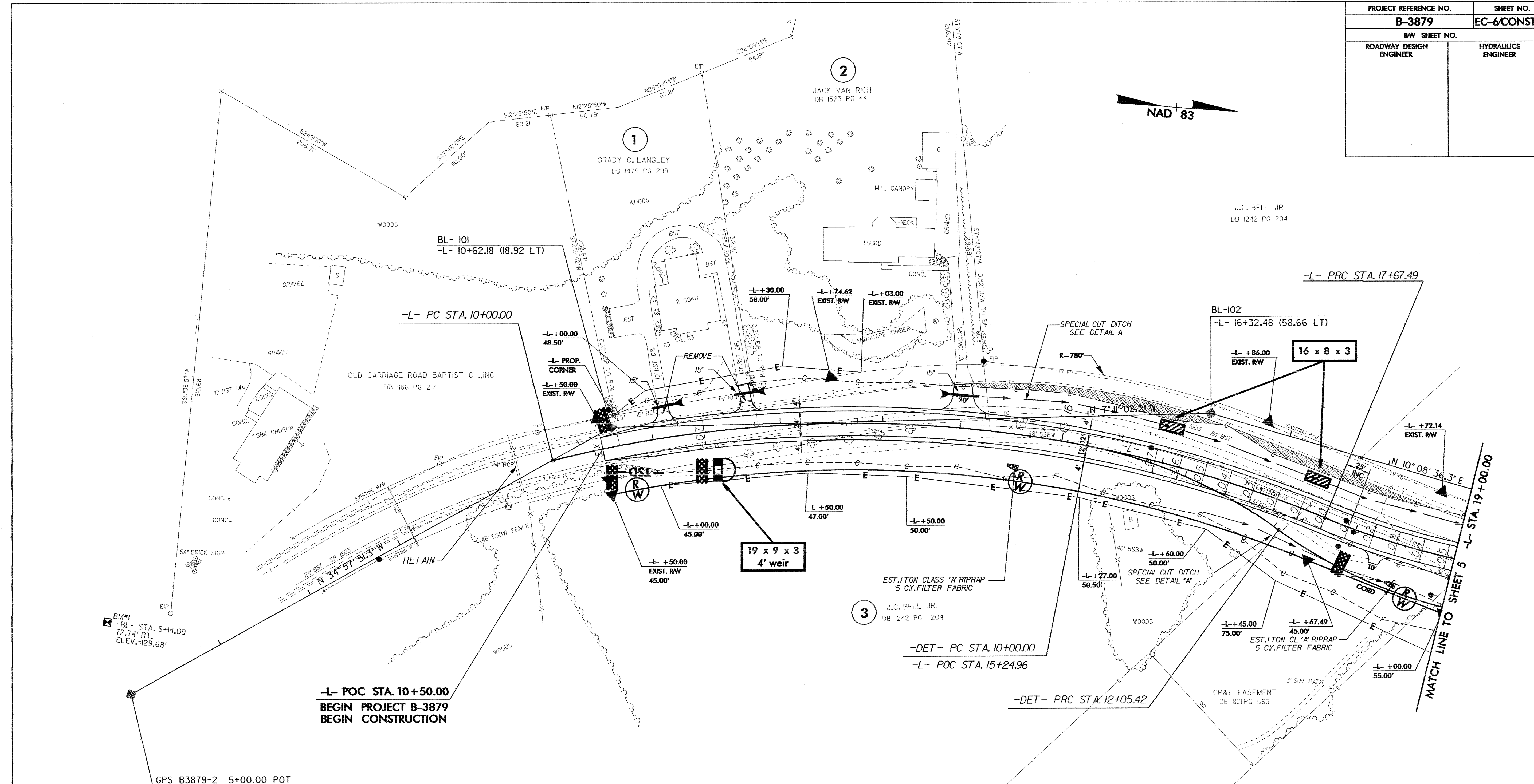


PROJECT REFERENCE NO.	SHEET NO.
B-3879	EC-6/CONST. 4
RW SHEET NO.	
ROADWAY DESIGN ENGINEER	HYDRAULICS ENGINEER



DATUM DESCRIPTION

THE LOCALIZED COORDINATE SYSTEM DEVELOPED FOR THIS PROJECT IS BASED ON THE STATE PLANE COORDINATES ESTABLISHED BY NCDOT FOR MONUMENT "GPS B3879-3" WITH NAD 1983/95 STATE PLANE GRID COORDINATES OF NORTHING: 816865.302(ft) EASTING: 2324903.841(ft) THE AVERAGE COMBINED GRID FACTOR USED ON THIS PROJECT (GROUND TO GRID) IS: 0.99995431 THE N.C. LAMBERT GRID BEARING AND LOCALIZED HORIZONTAL GROUND DISTANCE FROM "GPS B3879-3" TO -L- STATION 10+50.00 IS S 5°01'06.34" E 1,492.35 FT ALL LINEAR DIMENSIONS ARE LOCALIZED HORIZONTAL DISTANCES VERTICAL DATUM USED IS NAVD 88

-L-	
PI Sta 13+97.38	PI Sta 19+21.43
$\Delta = 36' 38' 41.8" (RT)$	$\Delta = 22' 54' 05.2" (LT)$
$D = 4' 46' 28.7"$	$D = 7' 32' 20.1"$
$L = 767.49'$	$L = 303.78'$
$T = 397.38'$	$T = 153.94'$
$R = 1,200.00'$	$R = 760.00'$
$SE = 0.07$	$SE = 0.08$
$RO = SEE PLANS$	$RO = SEE PLANS$
$V_{Des} = 50\text{mph}$	$V_{Des} = 50\text{mph}$

-DET-	
PI Sta 11+04.41	PI Sta 13+59.35
$\Delta = 25' 18' 39.3" (RT)$	$\Delta = 36' 37' 56.7" (LT)$
$D = 12' 19' 18.0"$	$D = 12' 19' 18.0"$
$L = 205.42'$	$L = 297.30'$
$T = 104.41'$	$T = 153.93'$
$R = 465.00'$	$R = 465.00'$
$V_{Des} = 40\text{ mph}$	$V_{Des} = 40\text{ mph}$

3
J.C. BELL JR.
DB 1242 PG 204

NOTE: SEE SHEET 7 FOR -L- PROFILE.
SEE SHEET 6 FOR DETOUR.