

METRIC

PROJECT REFERENCE NO. **R-2206B** SHEET NO. **UC-2**

DESIGNED BY: **JH**

DRAWN BY: **JH**

CHECKED BY: **RPW**

APPROVED BY: **RPW**

REVISER:

NORTH CAROLINA PROFESSIONAL ENGINEER
19024
ROBERT P. WILLCOY

NORTH CAROLINA DEPARTMENT OF TRANSPORTATION

DESIGN SERVICES UNIT
PHONE: (919)250-4128
FAX: (919)250-4119

UTILITY CONSTRUCTION
PLANS ONLY

SCALE

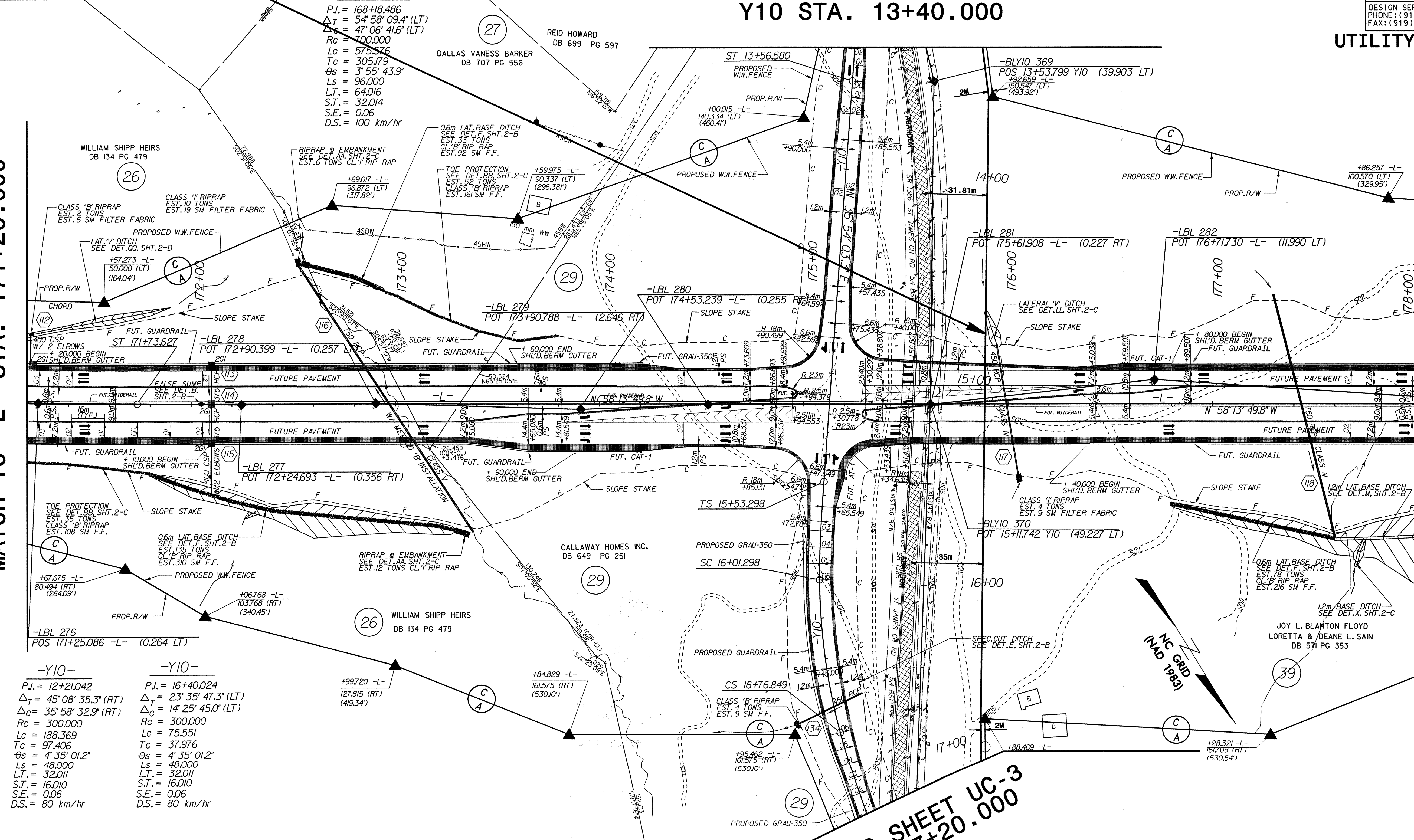
UTILITY CONSTRUCTION

PROP. 350M OF 200MM PVC WATER PIPE (C900), CLASS200 DR14, 1.38MPA WP, CONNECT USING NECESSARY FITTING

**MATCH TO SHEET UC-1
Y10 STA. 13+40.000**

MATCH TO -L- STA. 171+20.000

MATCH TO -L- STA. 178+00.000



P.I. = 168+18.486
 $\Delta_T = 54' 58'' 09.4''$ (LT)
 $\Delta_C = 47' 06'' 41.6''$ (LT)
 $R_c = 700,000$
 $L_c = 575.576$
 $T_c = 305.179$
 $\theta_s = 3' 55'' 43.9''$
 $L_s = 96,000$
 $L.T. = 64.016$
 $S.T. = 32.014$
 $S.E. = 0.06$
 $D.S. = 100 \text{ km/hr}$

-Y10-
P.I. = 12+21.042
 $\Delta_T = 45' 08'' 35.3''$ (RT)
 $\Delta_C = 35' 58'' 32.9''$ (RT)
 $R_c = 300,000$
 $L_c = 188.369$
 $T_c = 97.406$
 $\theta_s = 4' 35'' 01.2''$
 $L_s = 48,000$
 $L.T. = 32.011$
 $S.T. = 16.010$
 $S.E. = 0.06$
 $D.S. = 80 \text{ km/hr}$

-Y10-
P.I. = 16+40.024
 $\Delta_T = 23' 35'' 47.3''$ (LT)
 $\Delta_C = 14' 25'' 45.0''$ (LT)
 $R_c = 300,000$
 $L_c = 75.551$
 $T_c = 37.976$
 $\theta_s = 4' 35'' 01.2''$
 $L_s = 48,000$
 $L.T. = 32.011$
 $S.T. = 16.010$
 $S.E. = 0.06$
 $D.S. = 80 \text{ km/hr}$

**MATCH TO SHEET UC-3
Y10 STA. 17+20.000**

23-MAY-2001 08:26:00 v:2206b.u:2.dgn