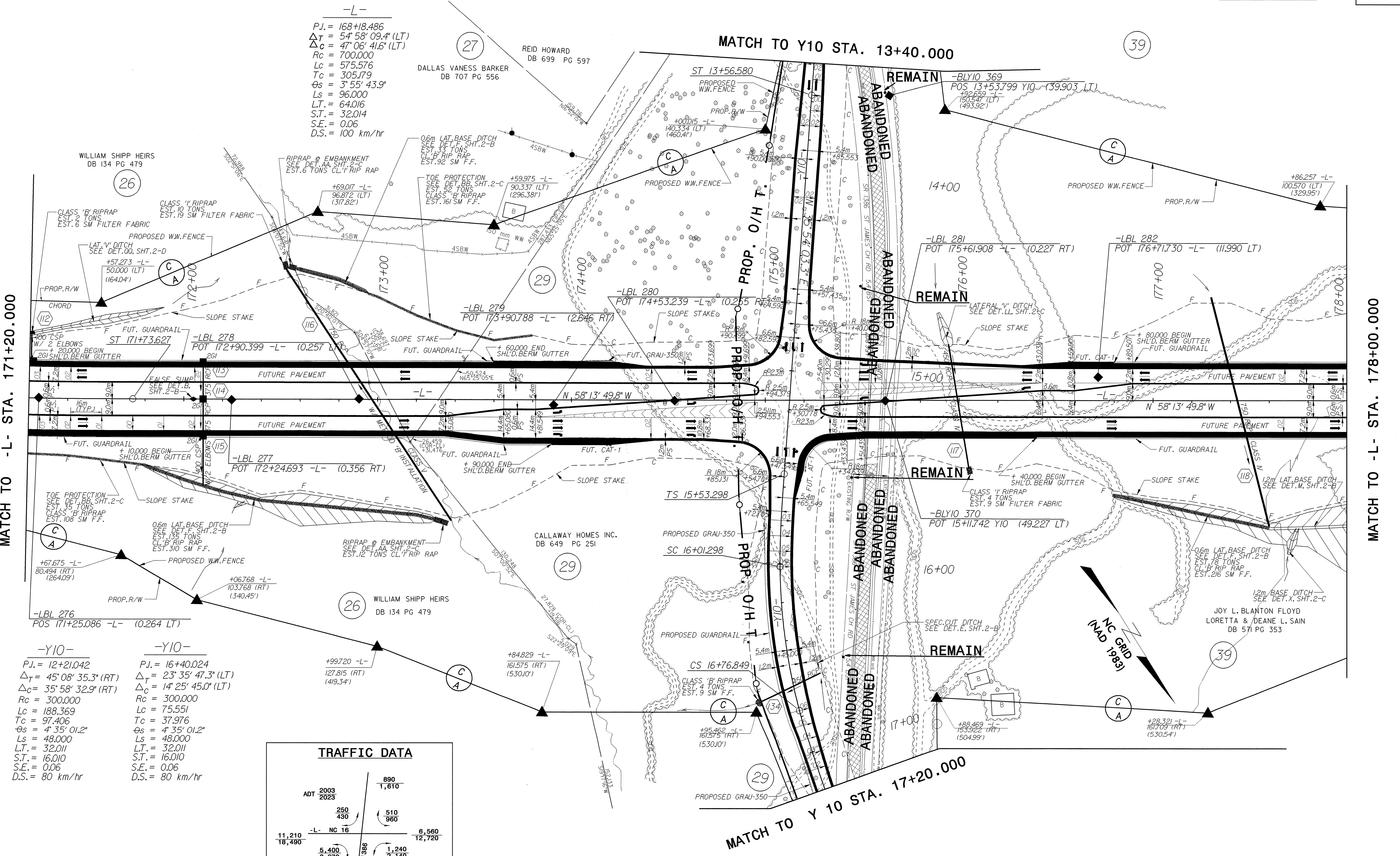


NOTE:
 ALL PROPOSED UTILITY WORK
 SHOWN ON THIS SHEET WILL
 BE DONE BY OTHERS

- NOTES**
- FOR PROFILE OF: SEE SHEET NO: 51 THRU 53, 57, 58
 - FOR CROSS SECTIONS OF: SEE SHEET NO: X-120 THRU X-137, X-163 THRU X-167

-L-
 P.I. = 168+18.486
 $\Delta T = 54' 58" 09.4" (LT)$
 $\Delta C = 47' 06" 41.6" (LT)$
 $R_c = 700.000$
 $L_c = 575.576$
 $T_c = 305.179$
 $\theta_s = 3' 55" 43.9"$
 $L_s = 96.000$
 $L.T. = 64.016$
 $S.T. = 32.014$
 $S.E. = 0.06$
 $D.S. = 100 \text{ km/hr}$



MATCH TO -L- STA. 171+20.000

MATCH TO -L- STA. 178+00.000

-Y10-
 P.I. = 12+21.042
 $\Delta T = 45' 08" 35.3" (RT)$
 $\Delta C = 35' 58" 32.9" (RT)$
 $R_c = 300.000$
 $L_c = 188.369$
 $T_c = 97.406$
 $\theta_s = 4' 35" 01.2"$
 $L_s = 48.000$
 $L.T. = 32.011$
 $S.T. = 16.010$
 $S.E. = 0.06$
 $D.S. = 80 \text{ km/hr}$

-Y10-
 P.I. = 16+40.024
 $\Delta T = 23' 35" 47.3" (LT)$
 $\Delta C = 14' 25" 45.0" (LT)$
 $R_c = 300.000$
 $L_c = 75.551$
 $T_c = 37.976$
 $\theta_s = 4' 35" 01.2"$
 $L_s = 48.000$
 $L.T. = 32.011$
 $S.T. = 16.010$
 $S.E. = 0.06$
 $D.S. = 80 \text{ km/hr}$

TRAFFIC DATA

ADT 2003	890
2023	1,610
250	510
430	960
11,210	8,560
18,490	12,720
5,400	1,240
8,670	2,140
Y10 SR 1388	6,970
	10,890