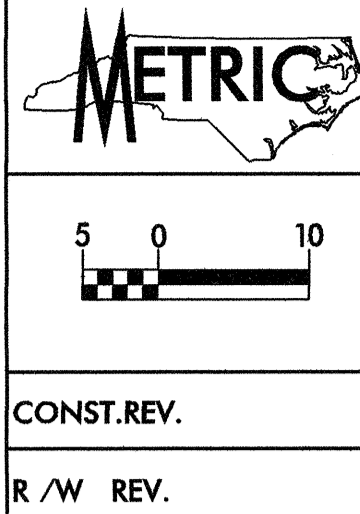
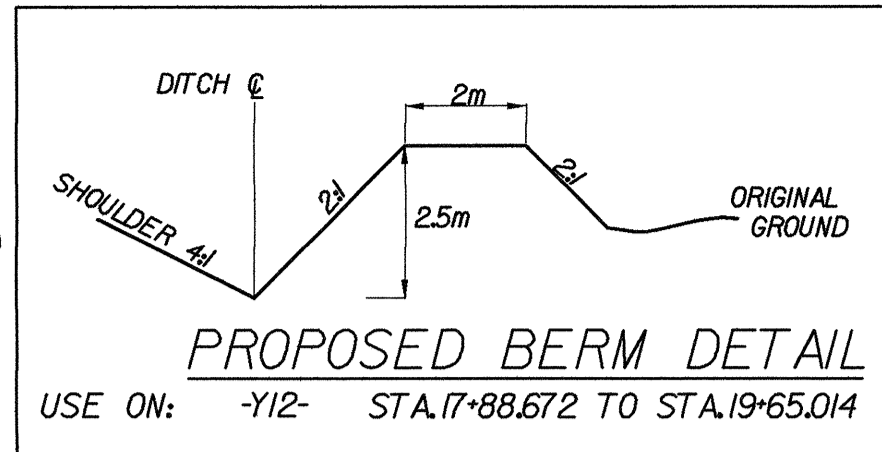


REVISIONS



PROJECT REFERENCE NO. R-2206B	SHEET NO. 5
R/W SHEET NO.	
ROADWAY DESIGN ENGINEER SEAL 022609	HYDRAULICS ENGINEER SEAL 14160
WILBUR SMITH ASSOCIATES P.O. BOX 2478 RALEIGH, N. C. 27602-2478	
TRANSISTE CONSULTING 1300 PADDOCK DRIVE, SUITE 8-10 RALEIGH, N. C. 27609	



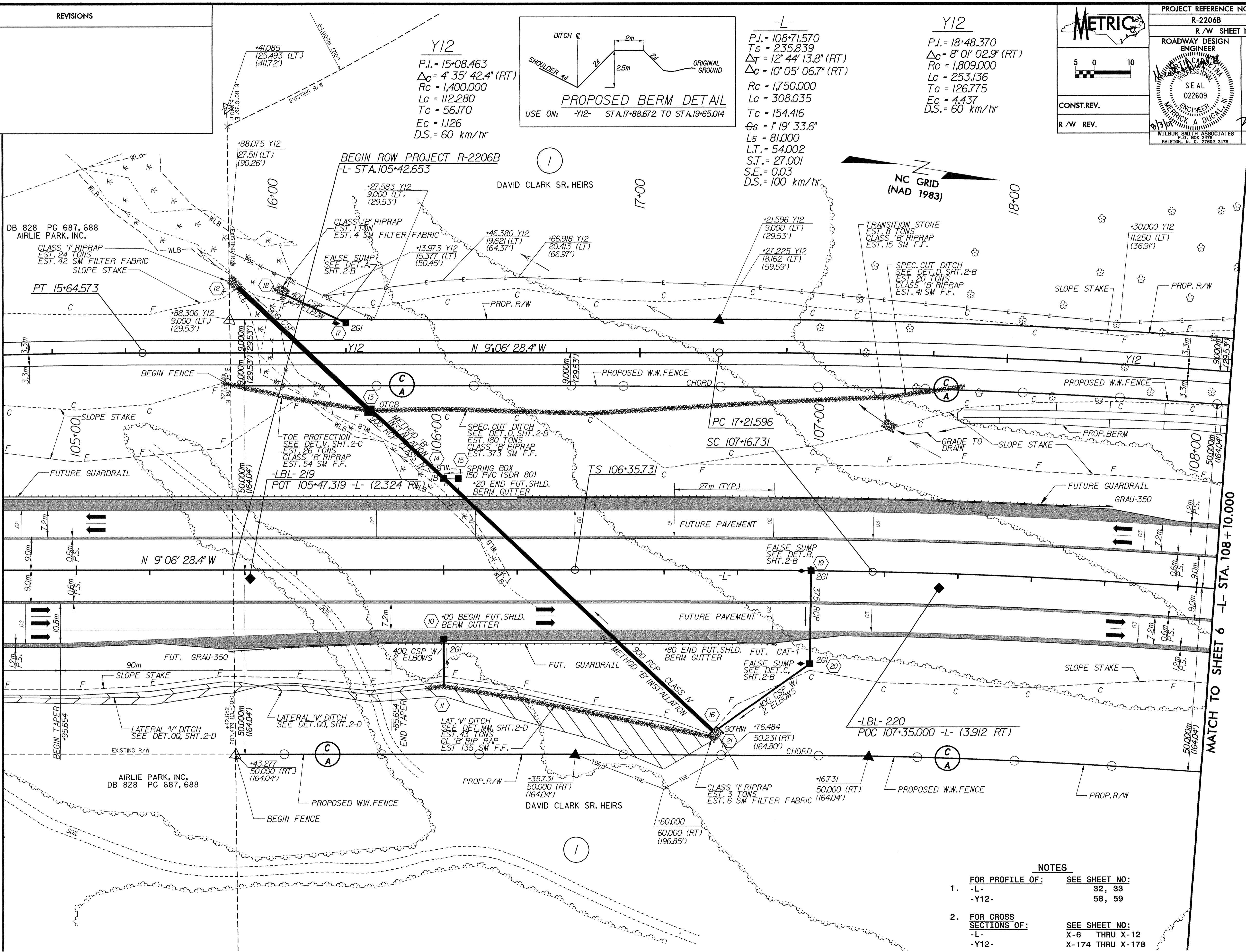
Y12
 P.I. = 15+08.463
 $\Delta C = 4' 35" 42.4" (RT)$
 $R_c = 1,400,000$
 $L_c = 112.280$
 $T_c = 56.170$
 $E_c = 1.126$
 $D.S. = 60 \text{ km/hr}$

-L-
 P.I. = 108+71.570
 $T_s = 235.839$
 $\Delta T = 12' 44" 13.8" (RT)$
 $\Delta C = 10' 05" 06.7" (RT)$
 $R_c = 1,750,000$
 $L_c = 308.035$
 $T_c = 154.416$
 $\theta_s = 1' 19" 33.6"$
 $L_s = 81,000$
 $L.T. = 54.002$
 $S.T. = 27.001$
 $S.E. = 0.03$
 $D.S. = 100 \text{ km/hr}$

Y12
 P.I. = 18+48.370
 $\Delta C = 8' 01" 02.9" (RT)$
 $R_c = 1,809,000$
 $L_c = 253.136$
 $T_c = 126.775$
 $E_c = 4.437$
 $D.S. = 60 \text{ km/hr}$

MATCH TO SHEET 4 -L- STA. 104+80.000

MATCH TO SHEET 6 -L- STA. 108+10.000



NOTES

- FOR PROFILE OF: SEE SHEET NO:
 -L- 32, 33
 -Y12- 58, 59
- FOR CROSS SECTIONS OF: SEE SHEET NO:
 -L- X-6 THRU X-12
 -Y12- X-174 THRU X-178