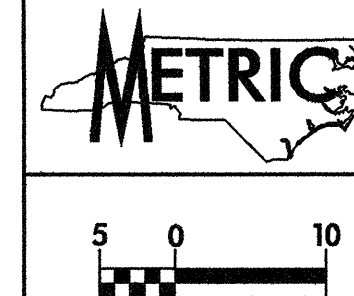


REVISIONS

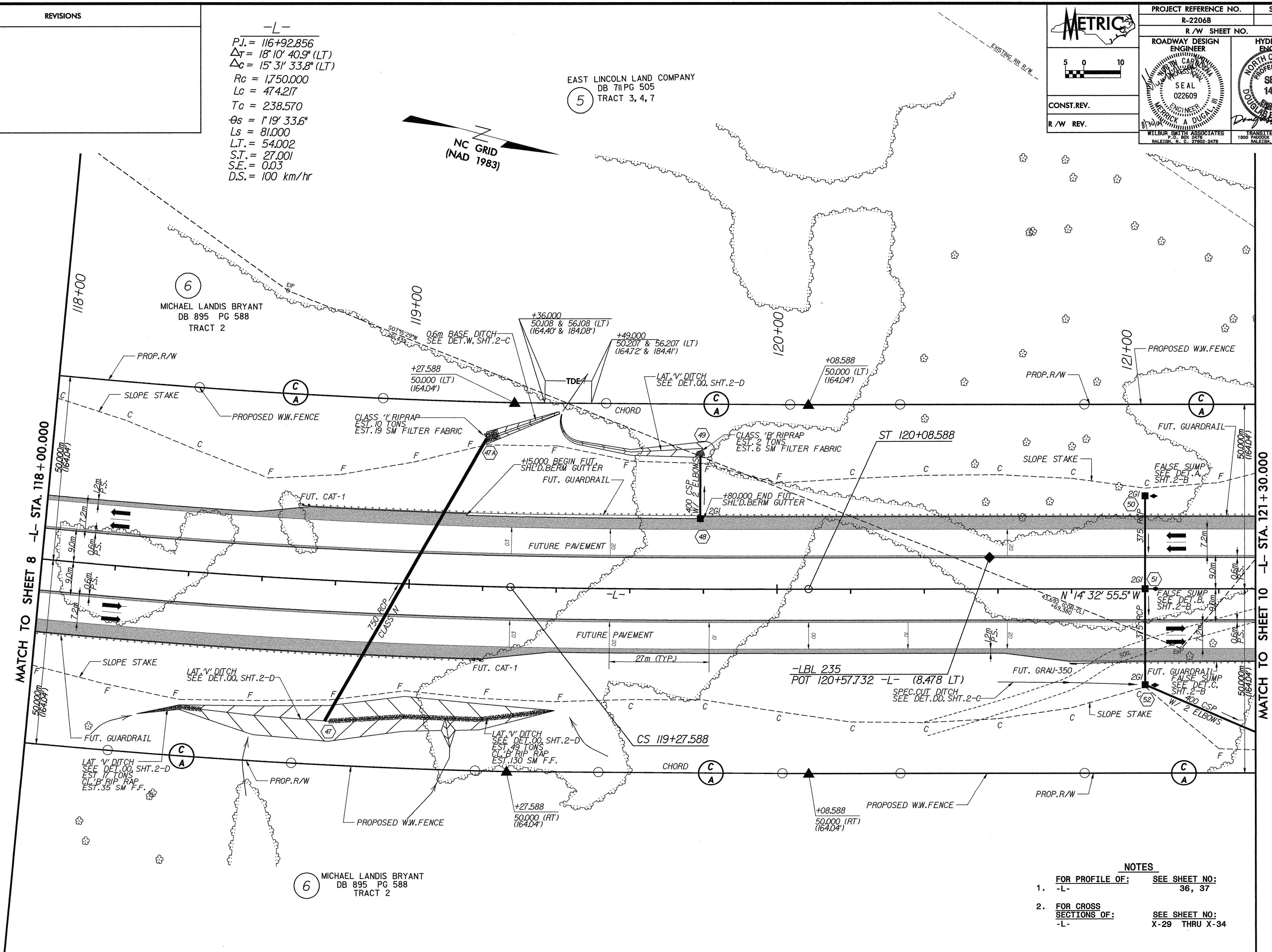
-L-
 P.I. = 116+92.856
 $\Delta T = 18' 10" 40.9" (LT)$
 $\Delta C = 15' 31" 33.8" (LT)$
 $R_c = 1,750.000$
 $L_c = 474.217$
 $T_c = 238.570$
 $\theta_s = 1' 19" 33.6"$
 $L_s = 81.000$
 $L.T. = 54.002$
 $S.T. = 27.001$
 $S.E. = 0.03$
 $D.S. = 100 \text{ km/hr}$

EAST LINCOLN LAND COMPANY
 DB 71 PG 505
 5 TRACT 3, 4, 7

NC GRID
 (NAD 1983)



PROJECT REFERENCE NO. R-2206B	SHEET NO. 9
R/W SHEET NO.	HYDRAULICS ENGINEER
ROADWAY DESIGN ENGINEER	SEAL 022609
CONST. REV.	R/W REV.
WILBUR SMITH ASSOCIATES P.O. BOX 2478 RALEIGH, N.C. 27602-2478	TRANSITE CONSULTING 1300 PONDOK DRIVE, SUITE 8-10 RALEIGH, N.C. 27609



MATCH TO SHEET 8 -L- STA. 118+00.000

MATCH TO SHEET 10 -L- STA. 121+30.000

NOTES

- 1. FOR PROFILE OF: -L- SEE SHEET NO: 36, 37
- 2. FOR CROSS SECTIONS OF: -L- SEE SHEET NO: X-29 THRU X-34

DATE: 8/20/04
 TIME: 9:28:24 AM
 P:\mca\1-2206\sheet09.dht