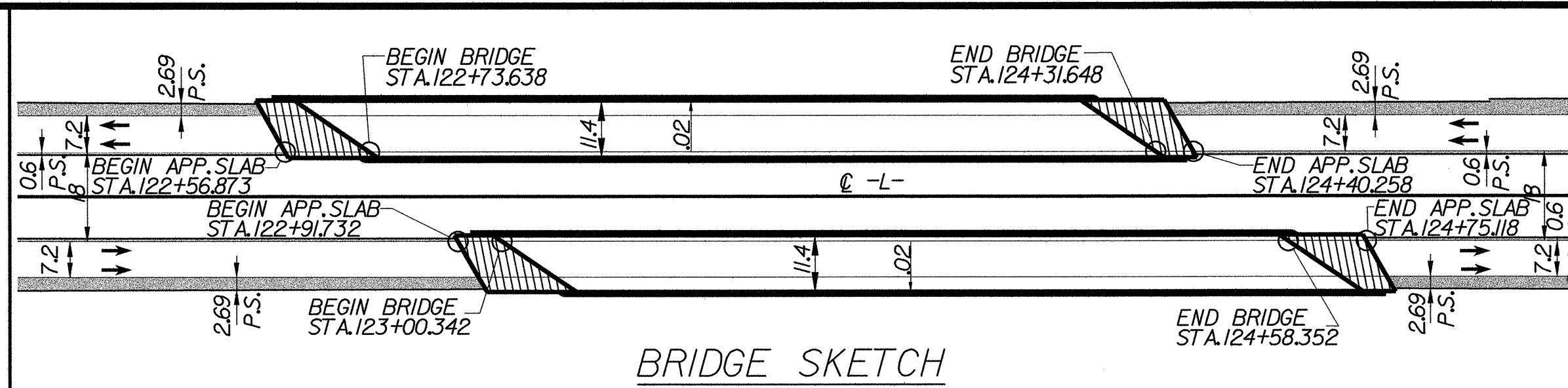


REVISIONS

EAST LINCOLN LAND COMPANY
DB 711 PG 505
TRACT 3, 4, 7



METRIC

PROJECT REFERENCE NO. R-2206B SHEET NO. 10

R/W SHEET NO.

ROADWAY DESIGN ENGINEER: [Signature]

HYDRAULICS ENGINEER: [Signature]

SEAL 022609

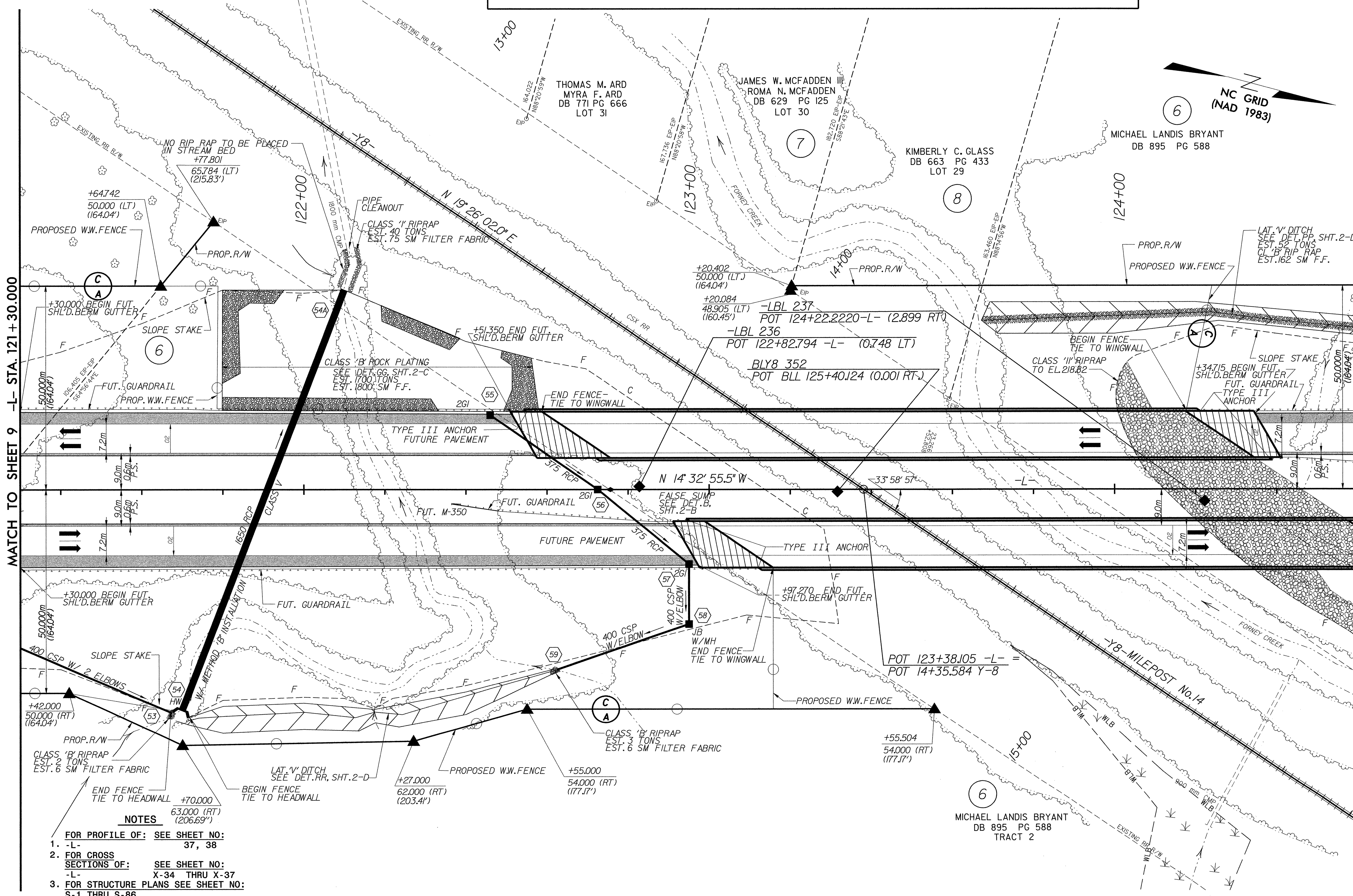
SEAL 14160

CONST. REV.

R/W REV.

WILBUR SMITH ASSOCIATES
1300 PADDOCK DRIVE, SUITE P-10
RALEIGH, N. C. 27602-2478

TRANSILIC CONSULTING
1300 PADDOCK DRIVE, SUITE P-10
RALEIGH, N. C. 27602-2478



MATCH TO SHEET 9 -L- STA. 121+30.000

MATCH TO SHEET 11 -L- STA. 124+60.000

- NOTES**
- FOR PROFILE OF: SEE SHEET NO:
1. -L- 37, 38
- FOR CROSS SECTIONS OF: SEE SHEET NO:
-L- X-34 THRU X-37
- FOR STRUCTURE PLANS SEE SHEET NO:
S-1 THRU S-86

DATE: 9/27/2014
TIME: 10:46:14 AM
FILE: mcdofv-2206b1sheet10.dwg