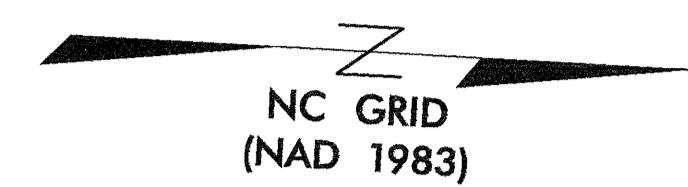


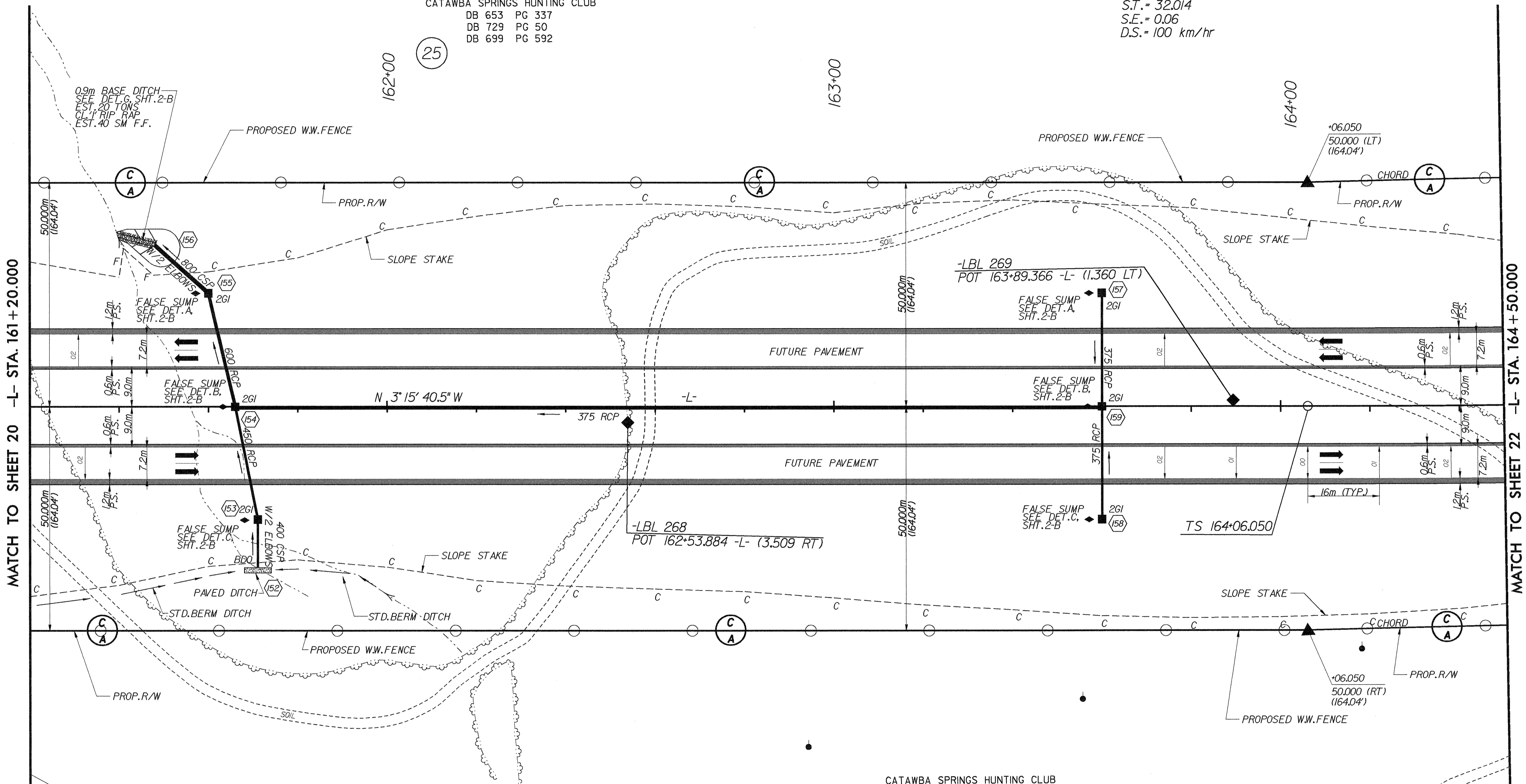
REVISIONS

PROJECT REFERENCE NO. R-2206B		SHEET NO. 21	
R/W SHEET NO.			
ROADWAY DESIGN ENGINEER SEAL 022609		HYDRAULICS ENGINEER SEAL 14160	
CONST.REV.		R/W REV.	

-L-
 P.I. = 168+18.486
 $\Delta T = 54^{\circ} 58' 09.4''$ (LT)
 $\Delta C = 47^{\circ} 06' 41.6''$ (LT)
 $R_c = 700.000$
 $L_c = 575.576$
 $T_c = 305.179$
 $\theta_s = 3^{\circ} 55' 43.9''$
 $L_s = 96.000$
 $L.T. = 64.016$
 $S.T. = 32.014$
 $S.E. = 0.06$
 $D.S. = 100$ km/hr



CATAWBA SPRINGS HUNTING CLUB
 DB 653 PG 337
 DB 729 PG 50
 DB 699 PG 592



MATCH TO SHEET 20 -L- STA. 161+20.000

MATCH TO SHEET 22 -L- STA. 164+50.000

CATAWBA SPRINGS HUNTING CLUB
 DB 653 PG 337
 DB 729 PG 50
 DB 699 PG 592

S. D. HOWARD ESTATE
 D.B. 1226 PG. 618
 PRIVATE ROAD R/W
 18.288M (60.00') WIDE

- NOTES**
- FOR PROFILE OF: -L- SEE SHEET NO: 48, 49
 - FOR CROSS SECTIONS OF: -L- SEE SHEET NO: X-107 THRU X-112

DATE: 06 SEP 2001
 TIME: 09:36:16
 FILE: R-2206B\limer21.dwg