

REVISIONS



PROJECT REFERENCE NO. R-2206B	SHEET NO. 27
R/W SHEET NO.	
ROADWAY DESIGN ENGINEER SEAL 022609	HYDRAULICS ENGINEER SEAL 14160
WILBURN SMITH ASSOCIATES 1300 HADDOCK DRIVE, SUITE 8-10 RALEIGH, N. C. 27602-8478	
FRANKLIN CONSULTING 1300 HADDOCK DRIVE, SUITE 8-10 RALEIGH, N. C. 27602-8478	



CONST. REV.

R/W REV.

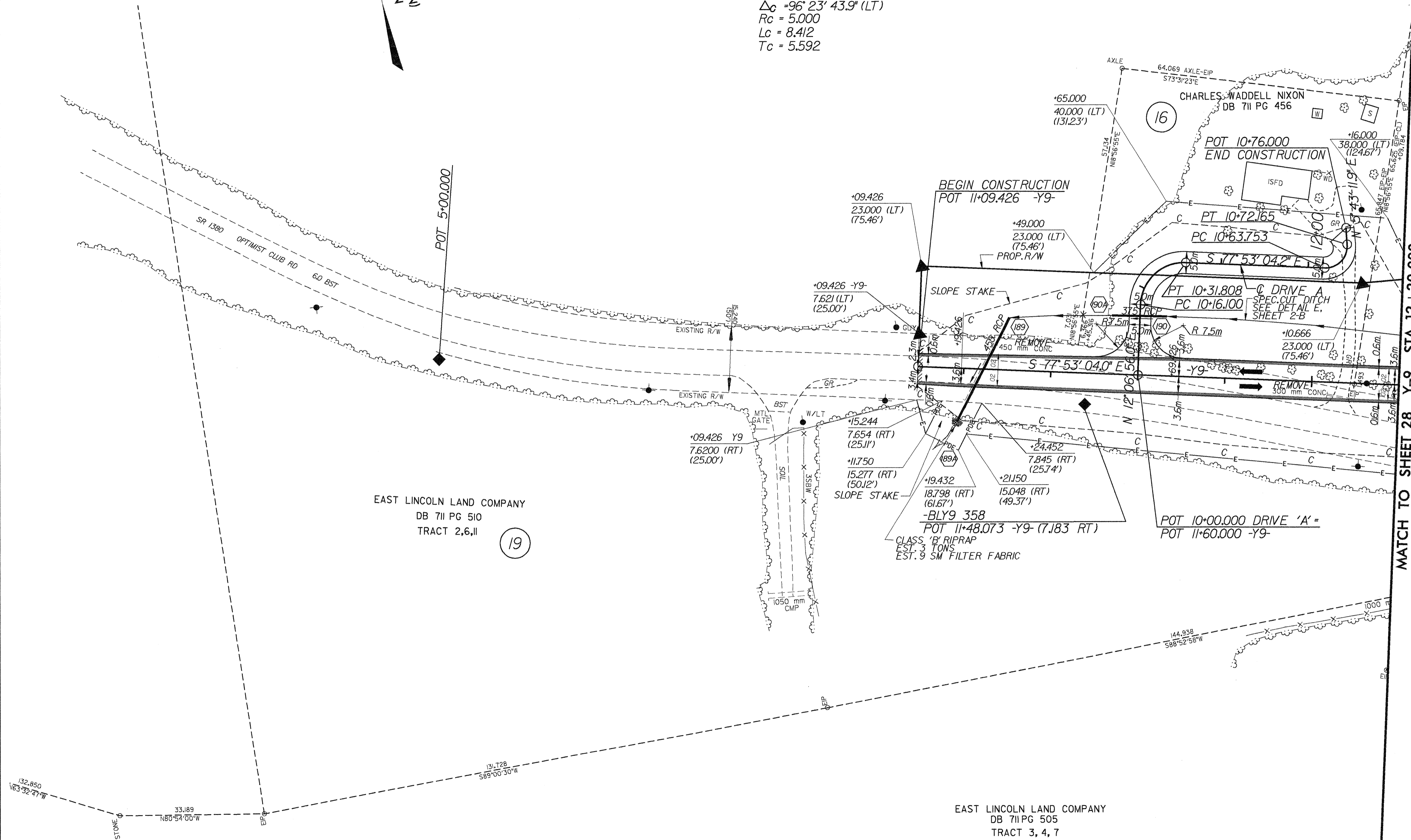
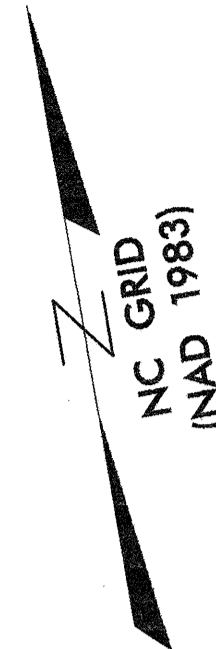
### -DRIVE A-

P.I. = 10+26.100  
 $\Delta C = 90^{\circ} 00' 00.0''$  (RT)  
 R<sub>c</sub> = 10.000  
 L<sub>c</sub> = 15.708  
 T<sub>c</sub> = 10.000

19

EAST LINCOLN LAND COMPANY  
 DB 711 PG 510  
 TRACT 2,6,11

P.I. = 10+69.345  
 $\Delta C = 96^{\circ} 23' 43.9''$  (LT)  
 R<sub>c</sub> = 5.000  
 L<sub>c</sub> = 8.412  
 T<sub>c</sub> = 5.592



DATE: 03 AUG 2001  
 TIME: 12:51:48  
 C:\P2206B\Drawn27.dwg

#### NOTES

- |                              |                           |
|------------------------------|---------------------------|
| FOR PROFILE OF:              | SEE SHEET NO:             |
| 1. -Y9-<br>DRIVE A           | 55<br>55                  |
| 2. FOR CROSS<br>SECTIONS OF: | SEE SHEET NO:             |
| -Y9-<br>DRIVE A              | X-147 THRU X-148<br>X-181 |