

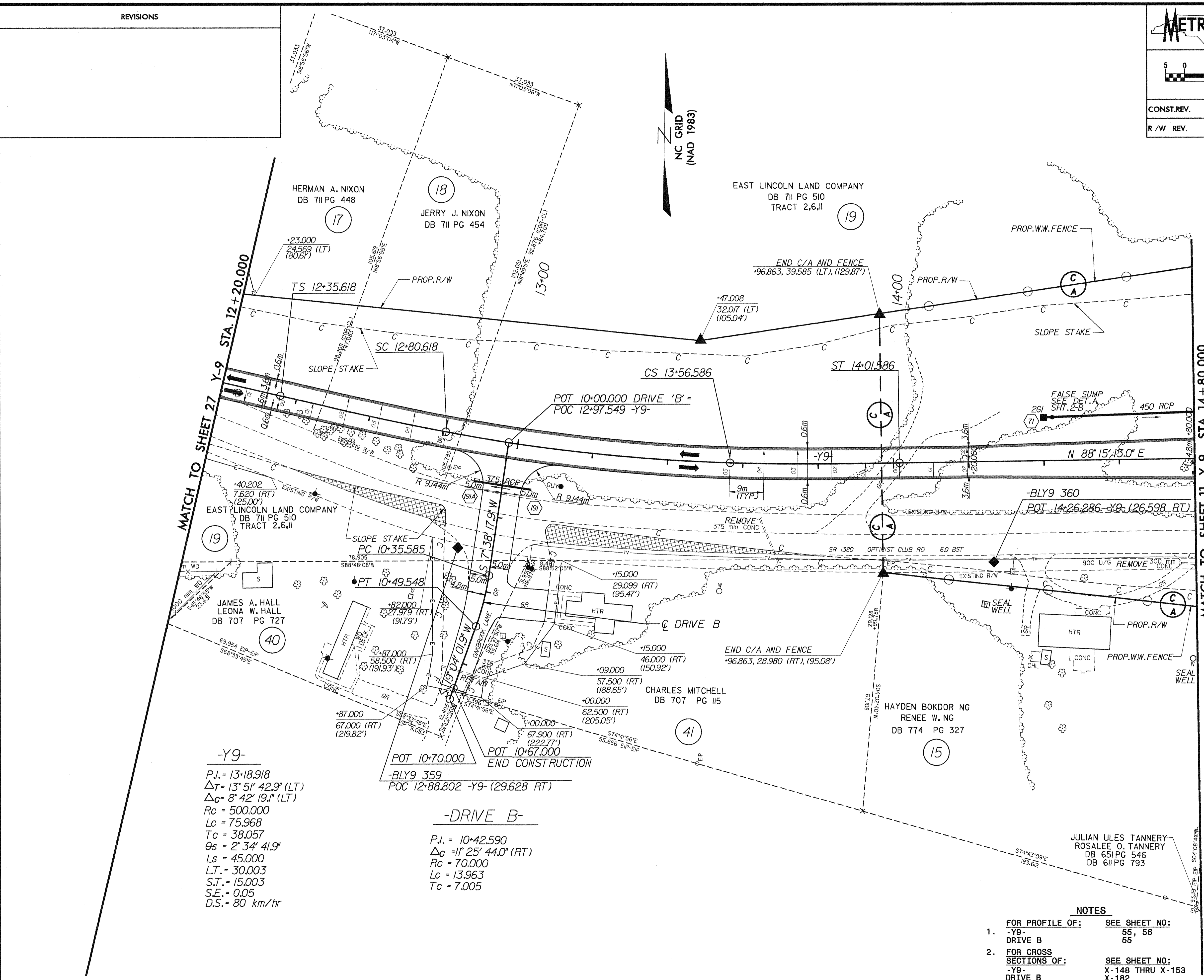
REVISIONS



CONST. REV.

R/W REV.

PROJECT REFERENCE NO. R-2206B	SHEET NO. 28
R/W SHEET NO.	
ROADWAY DESIGN ENGINEER SEAL 022609	HYDRAULICS ENGINEER SEAL 14160
WILBOR SMITH ASSOCIATES 1800 PARKWAY DRIVE, SUITE 3-10 RALEIGH, N. C. 27602-2478	
HYDRAULIC CONSULTING 1800 PARKWAY DRIVE, SUITE 3-10 RALEIGH, N. C. 27602-2478	



-Y9-  
 P.I. = 13+18.918  
 $\Delta T = 13^\circ 51' 42.9''$  (LT)  
 $\Delta C = 8^\circ 42' 19.1''$  (LT)  
 R<sub>c</sub> = 500.000  
 L<sub>c</sub> = 75.968  
 T<sub>c</sub> = 38.057  
 $\theta_s = 2^\circ 34' 41.9''$   
 L<sub>s</sub> = 45.000  
 L.T. = 30.003  
 S.T. = 15.003  
 S.E. = 0.05  
 D.S. = 80 km/hr

-DRIVE B-  
 P.I. = 10+42.590  
 $\Delta C = 11^\circ 25' 44.0''$  (RT)  
 R<sub>c</sub> = 70.000  
 L<sub>c</sub> = 13.963  
 T<sub>c</sub> = 7.005

- NOTES
- FOR PROFILE OF: SEE SHEET NO:  
 -Y9- 55, 56  
 DRIVE B 55
  - FOR CROSS SECTIONS OF: SEE SHEET NO:  
 -Y9- X-148 THRU X-153  
 DRIVE B X-182