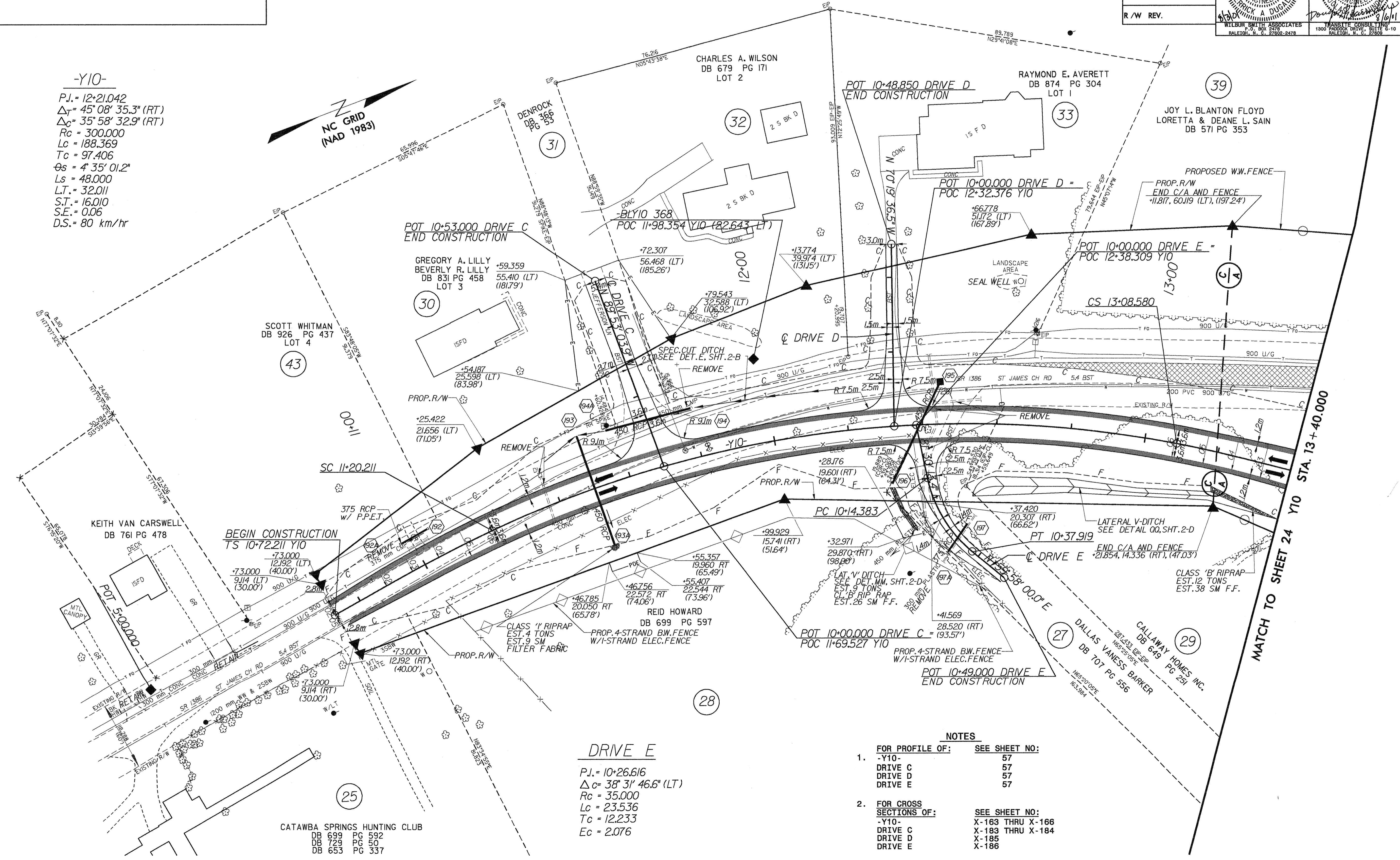
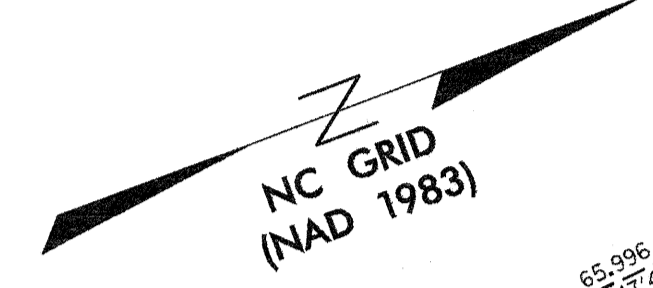


-Y10-
 P.J. = 12+21.042
 $\Delta T = 45^{\circ} 08' 35.3''$ (RT)
 $\Delta C = 35^{\circ} 58' 32.9''$ (RT)
 $R_c = 300.000$
 $L_c = 188.369$
 $T_c = 97.406$
 $\theta_s = 4^{\circ} 35' 01.2''$
 $L_s = 48.000$
 $L.T. = 32.011$
 $S.T. = 16.010$
 $S.E. = 0.06$
 $D.S. = 80 \text{ km/hr}$



DRIVE E
 P.J. = 10+26.616
 $\Delta C = 38^{\circ} 31' 46.6''$ (LT)
 $R_c = 35.000$
 $L_c = 23.536$
 $T_c = 12.233$
 $E_c = 2.076$

- NOTES**
- FOR PROFILE OF: SEE SHEET NO:
 -Y10- 57
 DRIVE C 57
 DRIVE D 57
 DRIVE E 57
 - FOR CROSS SECTIONS OF: SEE SHEET NO:
 -Y10- X-163 THRU X-166
 DRIVE C X-183 THRU X-184
 DRIVE D X-185
 DRIVE E X-186