
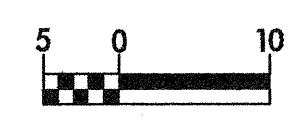
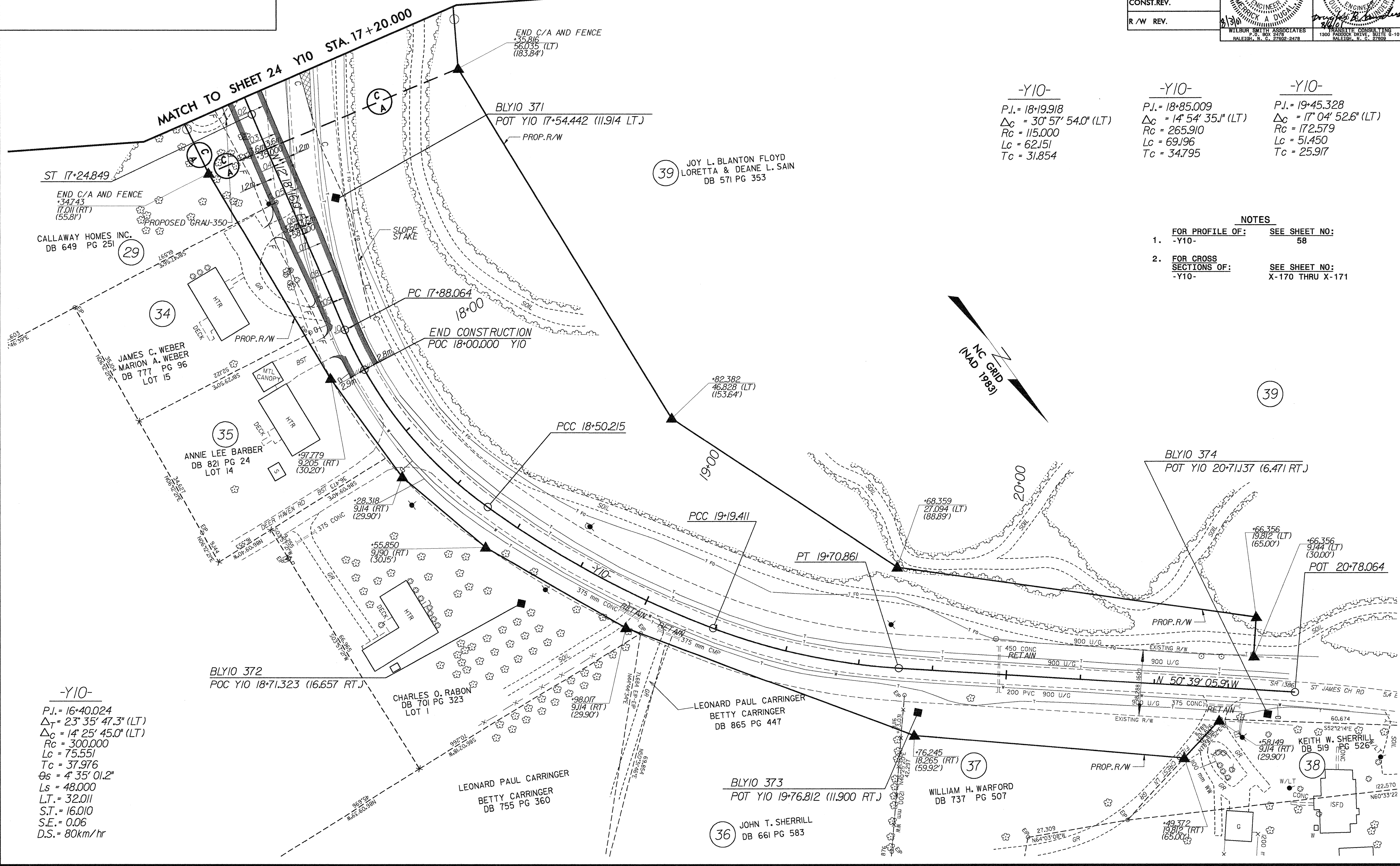


REVISIONS

 	PROJECT REFERENCE NO. R-2206B	SHEET NO. 31
	R/W SHEET NO.	
ROADWAY DESIGN ENGINEER SEAL 022609	HYDRAULICS ENGINEER SEAL 14160	
CONST.REV.		
R/W REV.		



-Y10-
 P.I. = 18+19.918
 $\Delta_c = 30^\circ 57' 54.0''$ (LT)
 $R_c = 115.000$
 $L_c = 62.151$
 $T_c = 31.854$

-Y10-
 P.I. = 18+85.009
 $\Delta_c = 14^\circ 54' 35.1''$ (LT)
 $R_c = 265.910$
 $L_c = 69.196$
 $T_c = 34.795$

-Y10-
 P.I. = 19+45.328
 $\Delta_c = 17^\circ 04' 52.6''$ (LT)
 $R_c = 172.579$
 $L_c = 51.450$
 $T_c = 25.917$

NOTES

- FOR PROFILE OF: -Y10- SEE SHEET NO: 58
- FOR CROSS SECTIONS OF: -Y10- SEE SHEET NO: X-170 THRU X-171

-Y10-
 P.I. = 16+40.024
 $\Delta_s = 23^\circ 35' 47.3''$ (LT)
 $\Delta_c = 14^\circ 25' 45.0''$ (LT)
 $R_c = 300.000$
 $L_c = 75.551$
 $T_c = 37.976$
 $\theta_s = 4^\circ 35' 01.2''$
 $L_s = 48.000$
 $L.T. = 32.011$
 $S.T. = 16.010$
 $S.E. = 0.06$
 $D.S. = 80\text{km/hr}$

DATE: 03 AUG 2001
 TIME: 17:57:05
 C:\P2206B\Drawn31.dwg