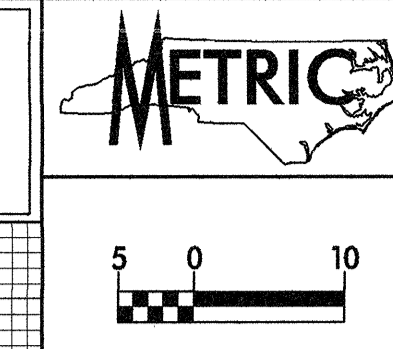
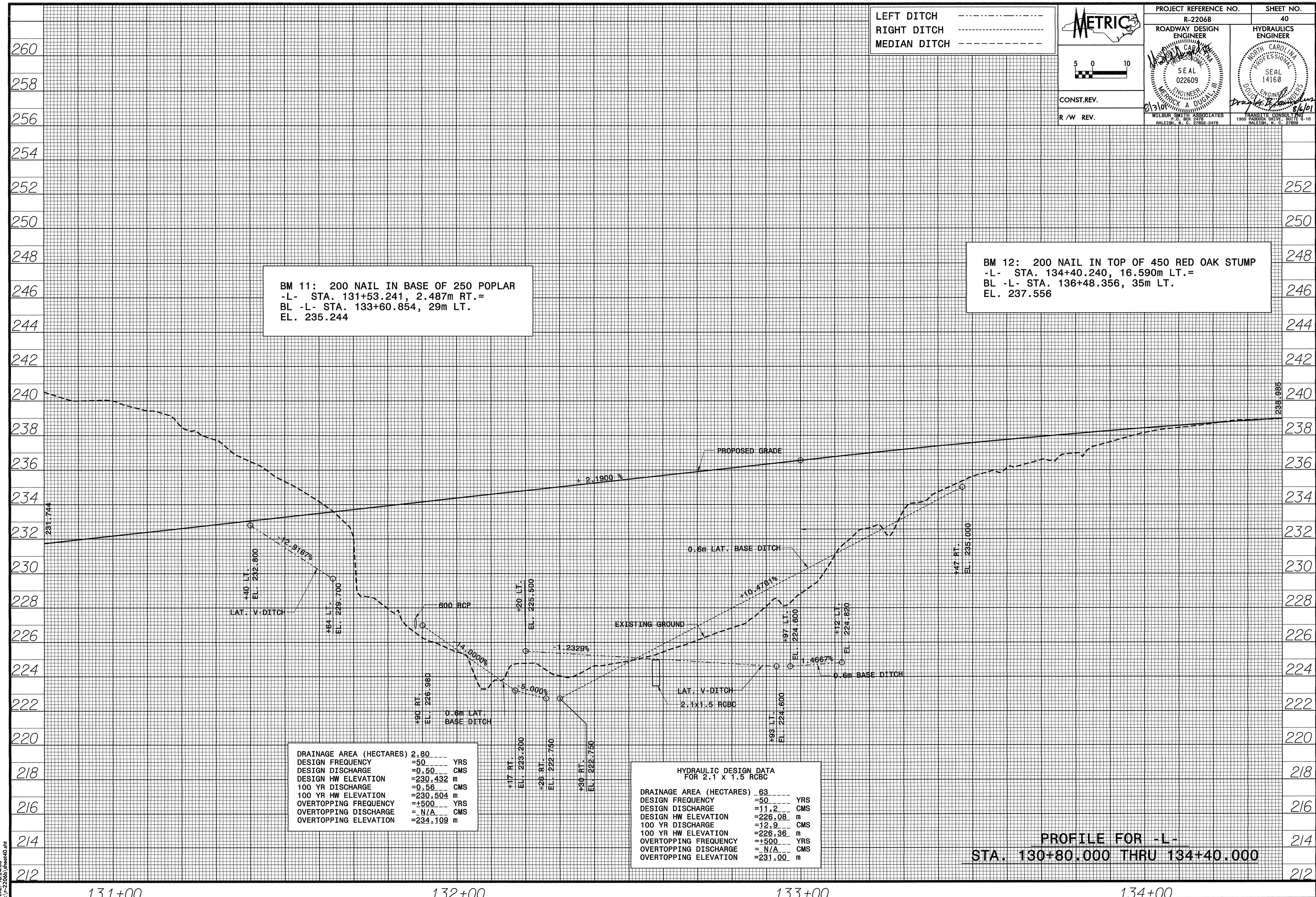


LEFT DITCH - - - - -  
 RIGHT DITCH - - - - -  
 MEDIAN DITCH - - - - -



PROJECT REFERENCE NO. R-2206B	SHEET NO. 40
ROADWAY DESIGN ENGINEER SEAL 022609	HYDRAULICS ENGINEER SEAL 14160
CONST. REV.	
R/W REV.	



BM 11: 200 NAIL IN BASE OF 250 POPLAR  
 -L- STA. 131+53.241, 2.487m RT.=  
 BL -L- STA. 133+60.854, 29m LT.  
 EL. 235.244

BM 12: 200 NAIL IN TOP OF 450 RED OAK STUMP  
 -L- STA. 134+40.240, 16.590m LT.=  
 BL -L- STA. 136+48.356, 35m LT.  
 EL. 237.556

DRAINAGE AREA (HECTARES)	2.80
DESIGN FREQUENCY	=50 YRS
DESIGN DISCHARGE	=0.50 CMS
DESIGN HW ELEVATION	=230.432 m
100 YR DISCHARGE	=0.56 CMS
100 YR HW ELEVATION	=230.504 m
OVERTOPPING FREQUENCY	=+500 YRS
OVERTOPPING DISCHARGE	= N/A CMS
OVERTOPPING ELEVATION	=234.109 m

HYDRAULIC DESIGN DATA FOR 2.1 x 1.5 RCBC	
DRAINAGE AREA (HECTARES)	.63
DESIGN FREQUENCY	=50 YRS
DESIGN DISCHARGE	=11.2 CMS
DESIGN HW ELEVATION	=226.08 m
100 YR DISCHARGE	=12.9 CMS
100 YR HW ELEVATION	=226.36 m
OVERTOPPING FREQUENCY	=+500 YRS
OVERTOPPING DISCHARGE	= N/A CMS
OVERTOPPING ELEVATION	=231.00 m

PROFILE FOR -L-  
 STA. 130+80.000 THRU 134+40.000

DATE: 02 AUG 2001  
 TIME: 18:24:33  
 FILE: R-2206B.dwg