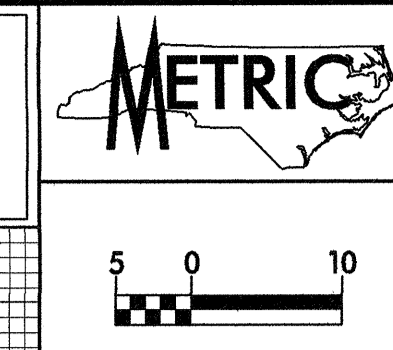
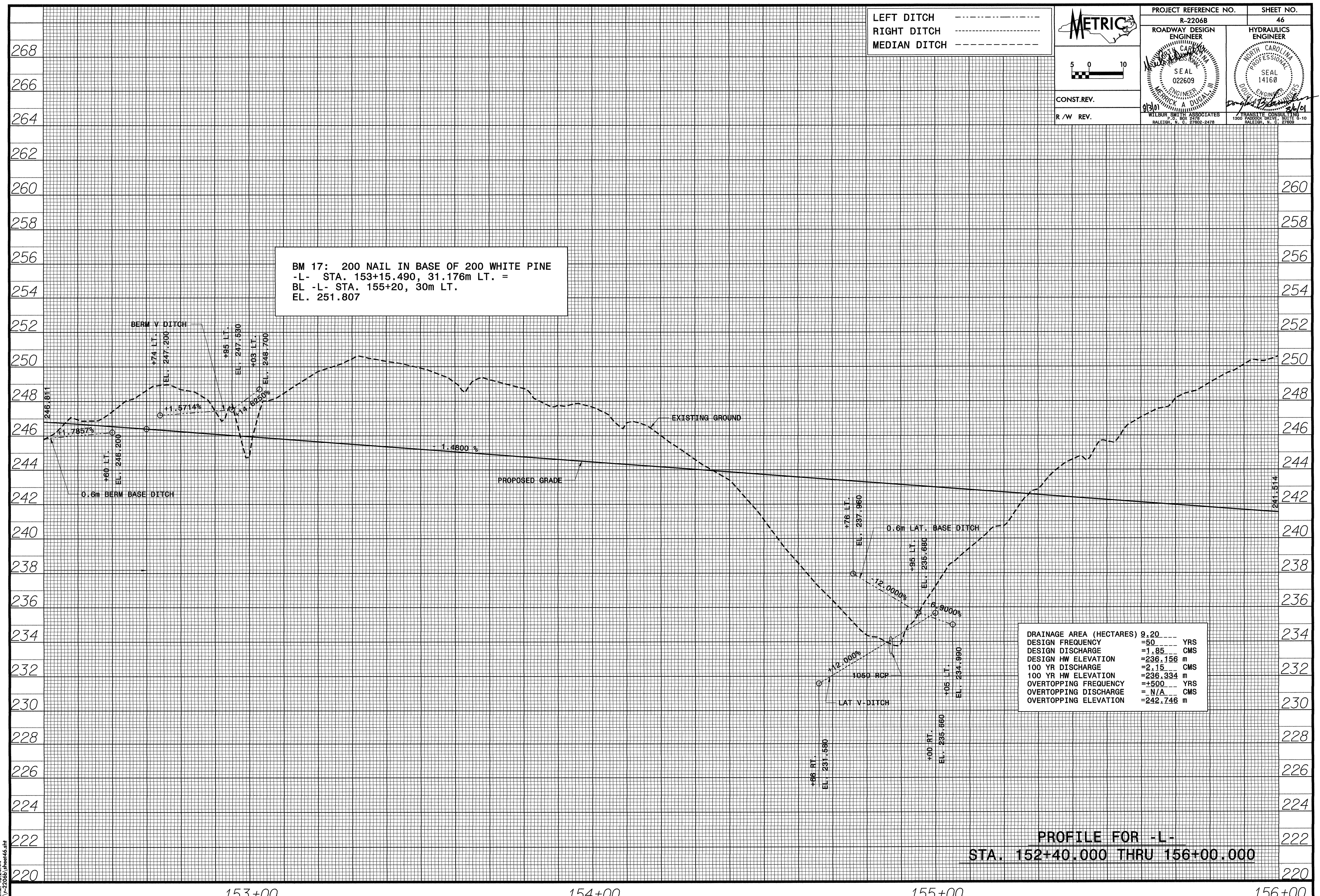


LEFT DITCH -----
 RIGHT DITCH -----
 MEDIAN DITCH -----



PROJECT REFERENCE NO. R-2206B	SHEET NO. 46
ROADWAY DESIGN ENGINEER WILBUR SMITH ASSOCIATES SEAL 022609	HYDRAULICS ENGINEER TRANSYTE CONSULTING SEAL 14160
CONST.REV.	
R/W REV.	

BM 17: 200 NAIL IN BASE OF 200 WHITE PINE
 -L- STA. 153+15.490, 31.176m LT. =
 BL -L- STA. 155+20, 30m LT.
 EL. 251.807



DRAINAGE AREA (HECTARES)	9.20	---
DESIGN FREQUENCY	=50	YRS
DESIGN DISCHARGE	=1.85	CMS
DESIGN HW ELEVATION	=236.156	m
100 YR DISCHARGE	=2.15	CMS
100 YR HW ELEVATION	=236.334	m
OVERTOPPING FREQUENCY	=+500	YRS
OVERTOPPING DISCHARGE	= N/A	CMS
OVERTOPPING ELEVATION	=242.746	m

PROFILE FOR -L-
 STA. 152+40.000 THRU 156+00.000

DATE: 02 AUG 2001
 TIME: 18:24:44
 P:\C-2206B\lthner16.dwg