

-Y12-
 PJ. = 13-96J83
 $\Delta c = 4' 35' 42.5''$ (LT)
 Rc = 1,400,000
 Lc = 112.281
 Tc = 56.170
 Ec = 1126
 D.S. = 60 kph

-Y12-
 PJ. = 15-08.463
 $\Delta c = 4' 35' 42.4''$ (RT)
 Rc = 1,400,000
 Lc = 112.280
 Tc = 56.170
 Ec = 1126
 D.S. = 60 kph

AIRLIE PARK, INC.
 DB 828 PG 687, 688

DATUM DESCRIPTION

IS BASED ON THE STATE PLANE COORDINATES ESTABLISHED BY NC GPS FOR MONUMENT "R2206-12" WITH NAD 83 STATE PLANE GRID COORDINATES OF NORTHING: N 193442.340 (m) EASTING: E 426931.078 (m)

GROUND-TO-GRID IS: 137981327

THE N.C. LAMBERT GRID BEARING AND LOCALIZED HORIZONTAL GROUND DISTANCE FROM "R2206-12" TO BLL STATION 109+46.663 IS

S 08°37'06.6" E 2145.798 m

ALL LINEAR DIMENSIONS ARE LOCALIZED HORIZONTAL DISTANCES

VERTICAL DATUM USED IS NGVD 1929

METRIC

PROJECT REFERENCE NO. R-2206B SHEET NO. 4

R/W SHEET NO.

ROADWAY DESIGN ENGINEER HYDRAULICS ENGINEER

PRELIMINARY PLANS
DO NOT USE FOR CONSTRUCTION

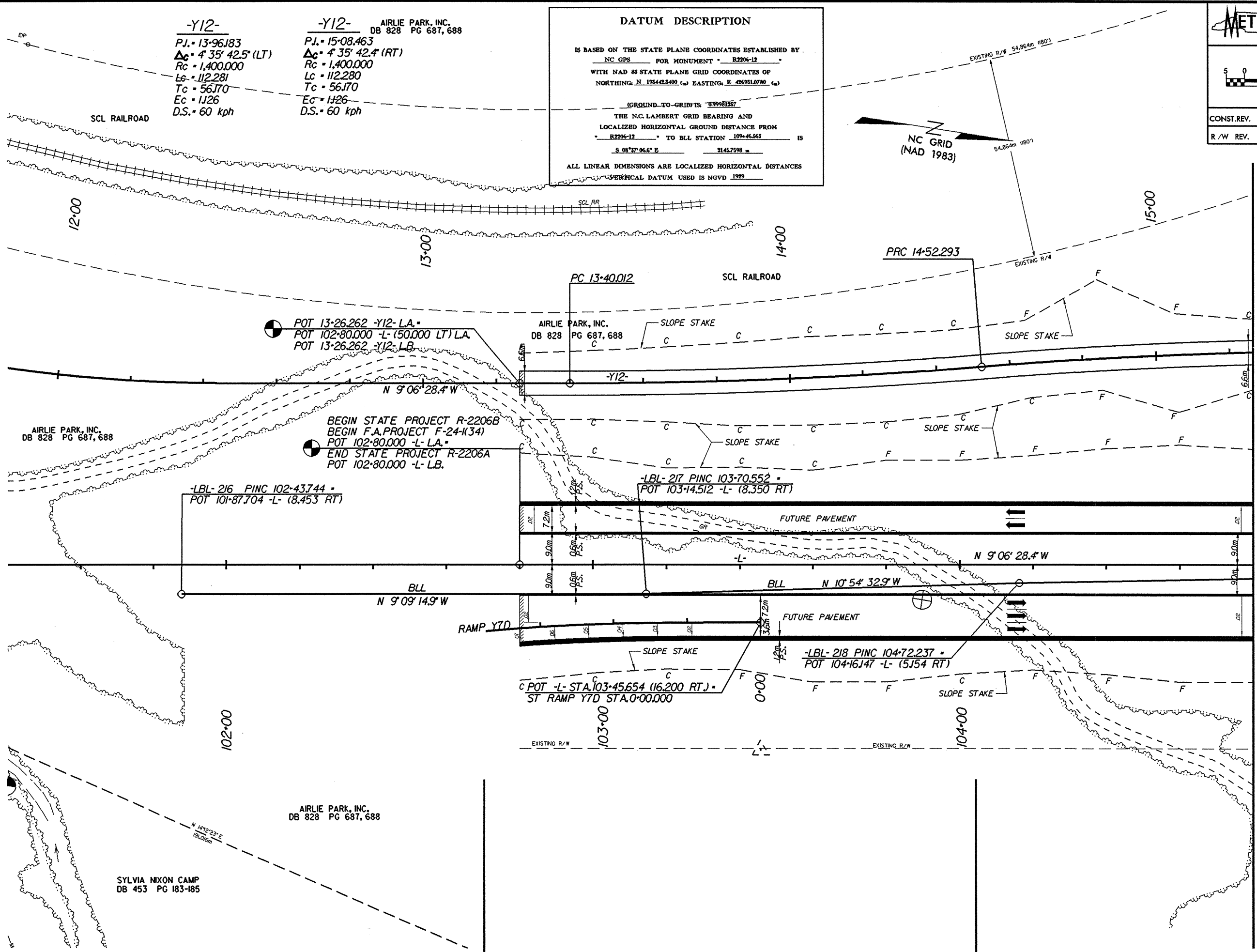
INCOMPLETE PLANS
DO NOT USE FOR R/W ACQUISITION

CONST. REV.

R/W REV.

WILBUR SMITH ASSOCIATES P.O. BOX 2478 RALEIGH, N. C. 27602-2478

TRANSITE CONSULTING 1200 PARKCROSS DRIVE, SUITE 8-10 RALEIGH, N. C. 27609



MATCH TO SHEET 5 -L- STA. 104+80.000

- NOTES**
- FOR PROFILE OF: SEE SHEET NO:
 -L- 33
 -Y12- 58, 59
 - FOR CROSS SECTIONS OF: SEE SHEET NO:
 -L- X-1 THRU X-X
 -Y12- X-1 THRU X-X