
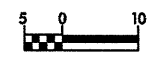


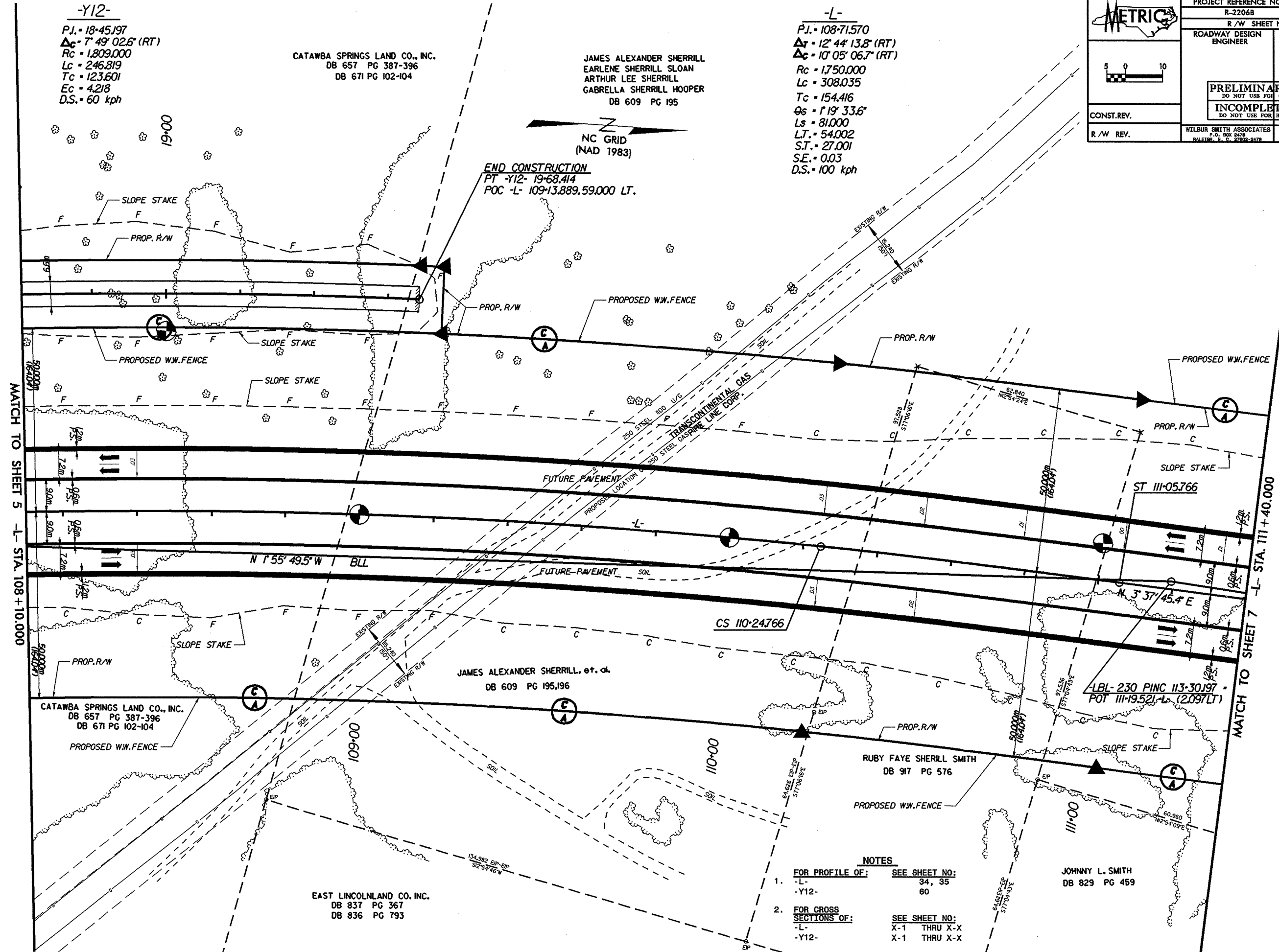
-Y12-
 P.J. = 18-45.197
 $\Delta c = 7' 49" 02.6'$ (RT)
 Rc = 1,809.000
 Lc = 246.819
 Tc = 123.601
 Ec = 4.218
 D.S. = 60 kph

CATAWBA SPRINGS LAND CO., INC.
 DB 657 PG 387-396
 DB 671 PG 102-104

JAMES ALEXANDER SHERRILL
 EARLENE SHERRILL SLOAN
 ARTHUR LEE SHERRILL
 GABRELLA SHERRILL HOOPER
 DB 609 PG 195

-L-
 P.J. = 108-71.570
 $\Delta c = 12' 44" 13.8'$ (RT)
 $\Delta c = 10' 05" 06.7'$ (RT)
 Rc = 1,750.000
 Lc = 308.035
 Tc = 154.416
 $\theta_s = 1' 19" 33.6'$
 Ls = 81.000
 LT = 54.002
 S.T. = 27.001
 S.E. = 0.03
 D.S. = 100 kph

 	PROJECT REFERENCE NO. R-2206B	SHEET NO. 6
	R/W SHEET NO.	
ROADWAY DESIGN ENGINEER	HYDRAULICS ENGINEER	
PRELIMINARY PLANS DO NOT USE FOR CONSTRUCTION		
INCOMPLETE PLANS DO NOT USE FOR R/W ACQUISITION		
CONST. REV.	WILBUR SMITH ASSOCIATES P.O. BOX 2478 RALEIGH, N. C. 27602-2478	
R/W REV.	TRANSITE CONSULTING 1300 PARROCK DRIVE, SUITE 6-10 RALEIGH, N. C. 27609	



MATCH TO SHEET 5 - L- STA. 108+10.000

MATCH TO SHEET 7 - L- STA. 111+40.000

- NOTES**
- FOR PROFILE OF: SEE SHEET NO:
 -L- 34, 35
 -Y12- 60
 - FOR CROSS SECTIONS OF: SEE SHEET NO:
 -L- X-1 THRU X-X
 -Y12- X-1 THRU X-X

CATAWBA SPRINGS LAND CO., INC.
 DB 657 PG 387-396
 DB 671 PG 102-104

JAMES ALEXANDER SHERRILL, et. al.
 DB 609 PG 195,196

RUBY FAYE SHERRILL SMITH
 DB 917 PG 576

JOHNNY L. SMITH
 DB 829 PG 469

EAST LINCOLN LAND CO., INC.
 DB 837 PG 367
 DB 836 PG 793