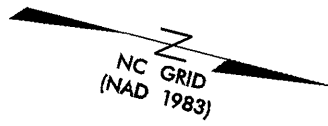
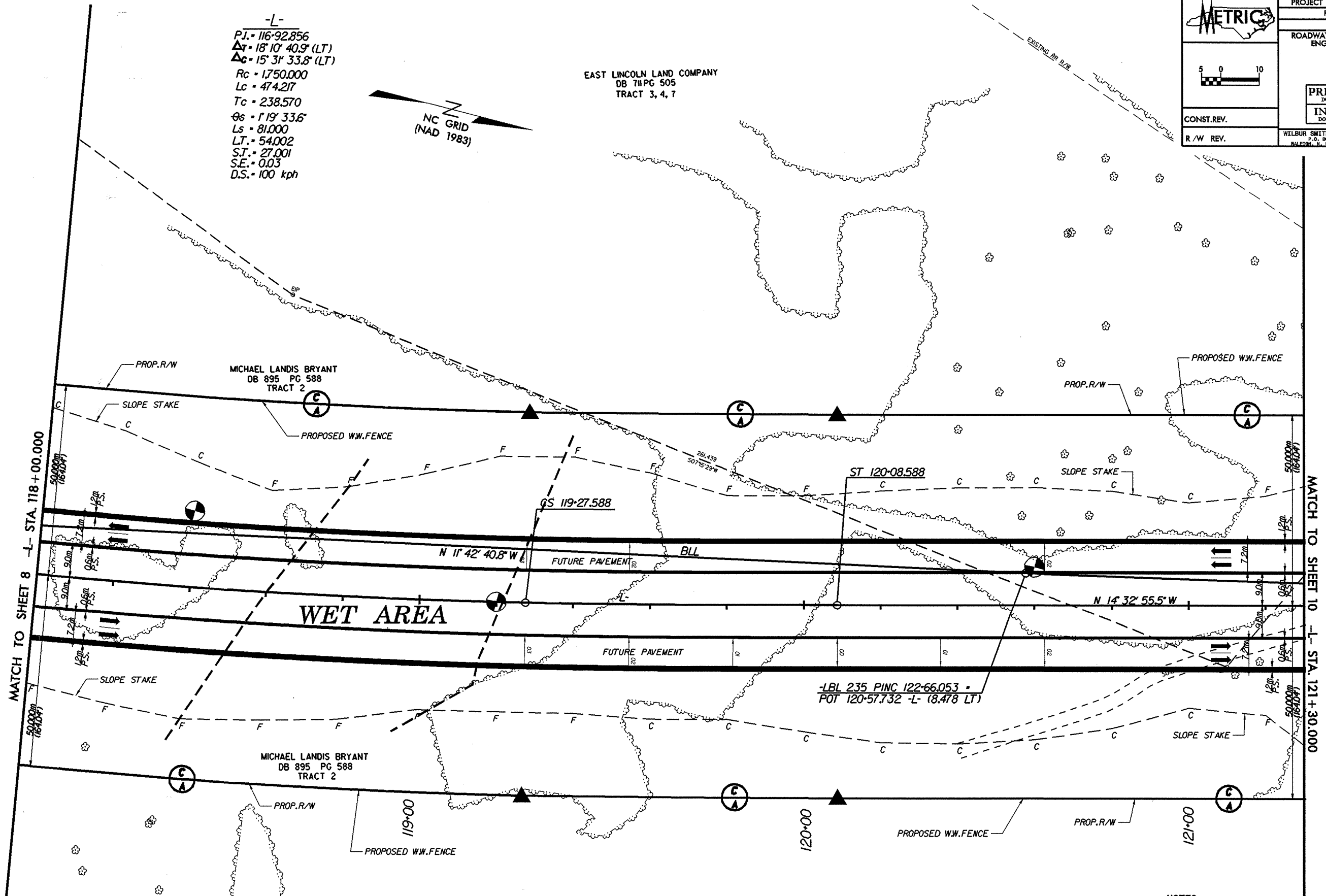


-L-
 P.I. = 116-92.856
 $\Delta T = 18' 10" 40.9" (LT)$
 $\Delta C = 15' 31" 33.8" (LT)$
 $R_c = 1,750,000$
 $L_c = 474.217$
 $T_c = 238.570$
 $\theta_s = 1' 19" 33.6"$
 $L_s = 81,000$
 $L.T. = 54,002$
 $S.T. = 27,001$
 $S.E. = 0.03$
 $D.S. = 100 \text{ kph}$

EAST LINCOLN LAND COMPANY
 DB 711 PG 505
 TRACT 3, 4, 7



	PROJECT REFERENCE NO.	SHEET NO.
	R-2206B	9
	R/W SHEET NO.	
	ROADWAY DESIGN ENGINEER	HYDRAULICS ENGINEER
CONST.REV. R/W REV.	PRELIMINARY PLANS DO NOT USE FOR CONSTRUCTION INCOMPLETE PLANS DO NOT USE FOR R/W ACQUISITION	
	WILBUR SMITH ASSOCIATES P.O. BOX 2478 RALEIGH, N. C. 27602-2478	TRANSITE CONSULTING 1900 PARKWOOD DRIVE, SUITE 8-10 RALEIGH, N. C. 27609



MATCH TO SHEET 8 -L- STA. 118+00.000

MATCH TO SHEET 10 -L- STA. 121+30.000

NOTES

- FOR PROFILE OF: -L- SEE SHEET NO: 37, 38
- FOR CROSS SECTIONS OF: -L- SEE SHEET NO: X-1 THRU X-X