
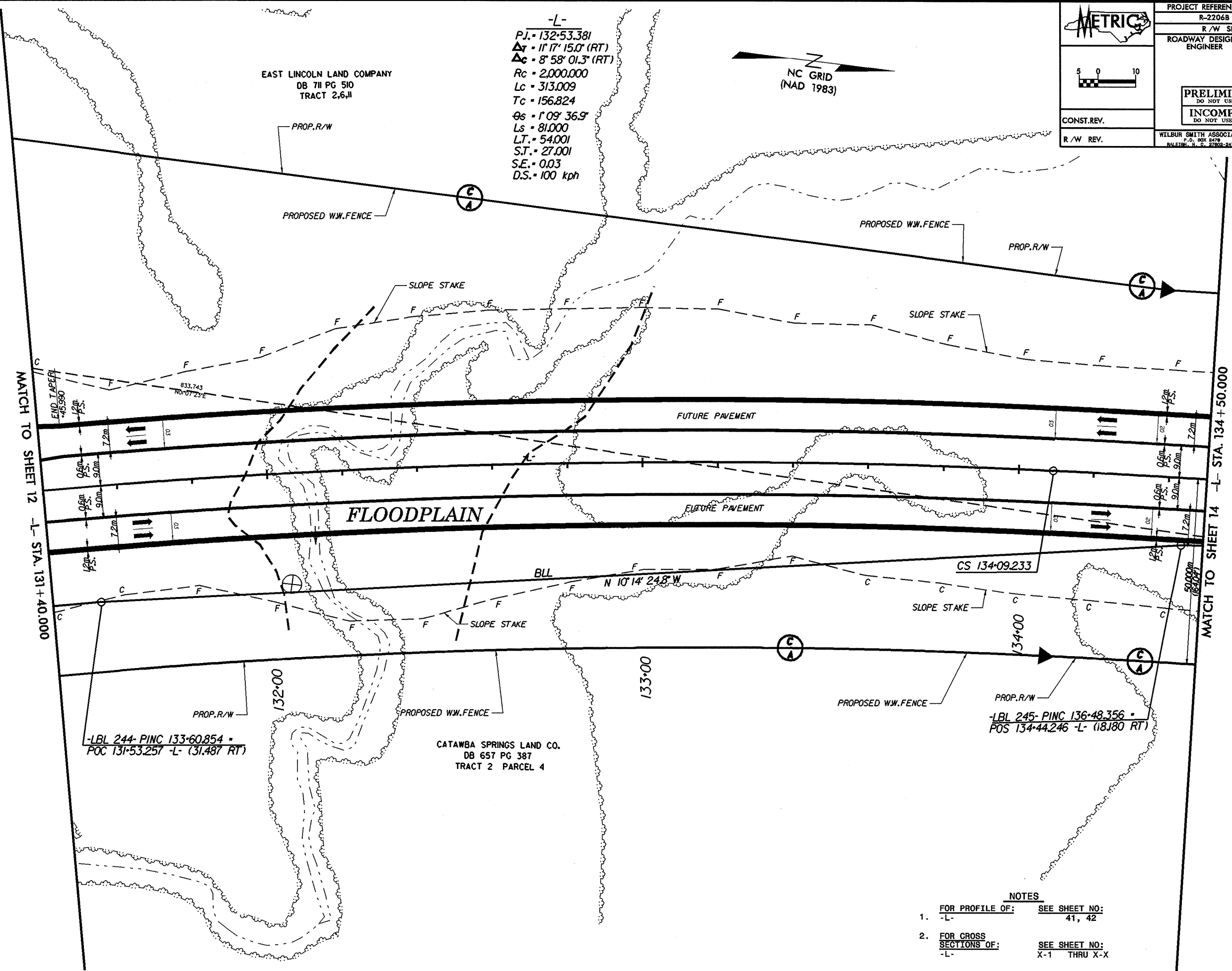
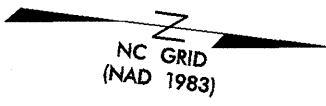
	PROJECT REFERENCE NO.	SHEET NO.
	R-2206B	13
	R/W SHEET NO.	
	ROADWAY DESIGN ENGINEER	HYDRAULICS ENGINEER
<b>PRELIMINARY PLANS</b> DO NOT USE FOR CONSTRUCTION		
<b>INCOMPLETE PLANS</b> DO NOT USE FOR R/W ACQUISITION		
CONST. REV.		
R/W REV.	WILBUR SMITH ASSOCIATES P.O. BOX 2479 RALEIGH, N. C. 27602-2479	TRANSITE CONSULTING 1900 PARKWAY DRIVE, SUITE 9-10 RALEIGH, N. C. 27602-2479

-L-  
 P.J. = 132+53.381  
 $\Delta r = 11' 17" 15.0" (RT)$   
 $\Delta c = 8' 58" 01.3" (RT)$   
 $R_c = 2,000.000$   
 $L_c = 313.009$   
 $T_c = 156.824$   
 $\theta_s = 1' 09" 36.9"$   
 $L_s = 81.000$   
 $L.T. = 54.001$   
 $S.T. = 27.001$   
 $S.E. = 0.03$   
 $D.S. = 100 \text{ kph}$



MATCH TO SHEET 12 -L- STA. 131+40.000

MATCH TO SHEET 14 -L- STA. 134+50.000

- NOTES**
- FOR PROFILE OF: SEE SHEET NO:  
-L- 41, 42
  - FOR CROSS SECTIONS OF: SEE SHEET NO:  
-L- X-1 THRU X-X