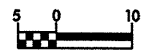
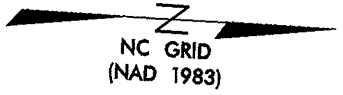
	PROJECT REFERENCE NO.	SHEET NO.
	R-2206B	22
	R/W SHEET NO.	
	ROADWAY DESIGN ENGINEER	HYDRAULICS ENGINEER
CONST. REV.	PRELIMINARY PLANS DO NOT USE FOR CONSTRUCTION	
	INCOMPLETE PLANS DO NOT USE FOR R/W ACQUISITION	
R/W REV.	WILBUR SMITH ASSOCIATES P.O. BOX 2478 RALEIGH, N.C. 27602-2478	TRANSITE CONSULTING 1900 PARKWOOD DRIVE, SUITE 8-10 RALEIGH, N.C. 27608

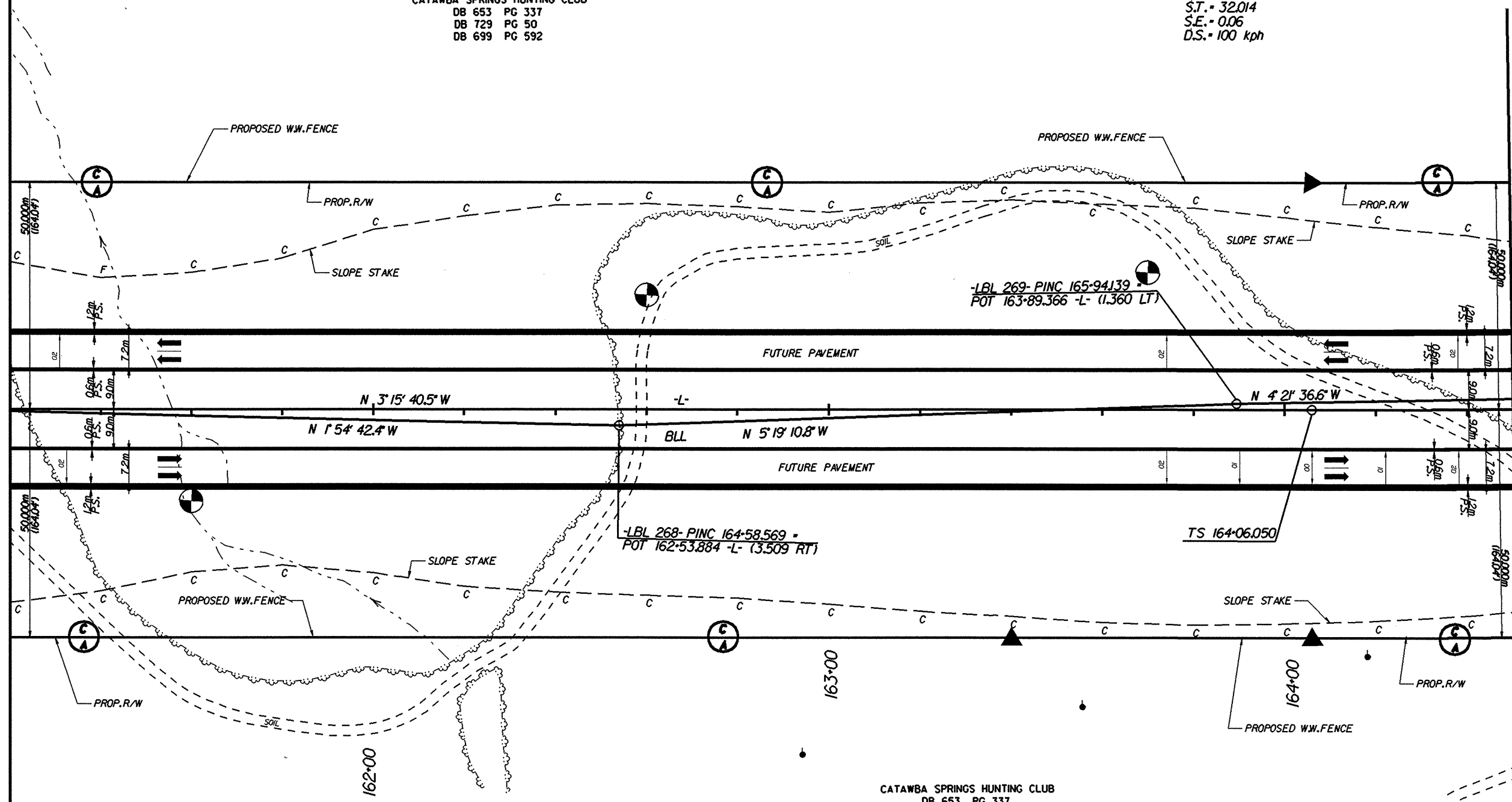
-L-
 P.I. = 163+18.486
 $\Delta T = 54^{\circ} 58' 09.4''$ (LT)
 $\Delta C = 47^{\circ} 06' 41.6''$ (LT)
 Rc = 700.000
 Lc = 575.576
 Tc = 305.179
 $\theta_s = 3^{\circ} 55' 43.9''$
 Ls = 96.000
 L.T. = 64.016
 S.T. = 32.014
 S.E. = 0.06
 D.S. = 100 kph



CATAWBA SPRINGS HUNTING CLUB
 DB 653 PG 337
 DB 729 PG 50
 DB 699 PG 592

MATCH TO SHEET 21 -L- STA. 161+20.000

MATCH TO SHEET 23 -L- STA. 164+50.000



CATAWBA SPRINGS HUNTING CLUB
 DB 653 PG 337
 DB 729 PG 50
 DB 699 PG 592

- NOTES**
- FOR PROFILE OF: -L- SEE SHEET NO: 49, 50
 - FOR CROSS SECTIONS OF: -L- SEE SHEET NO: X-1 THRU X-X