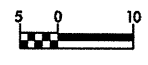
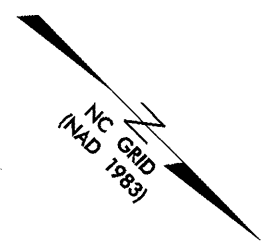
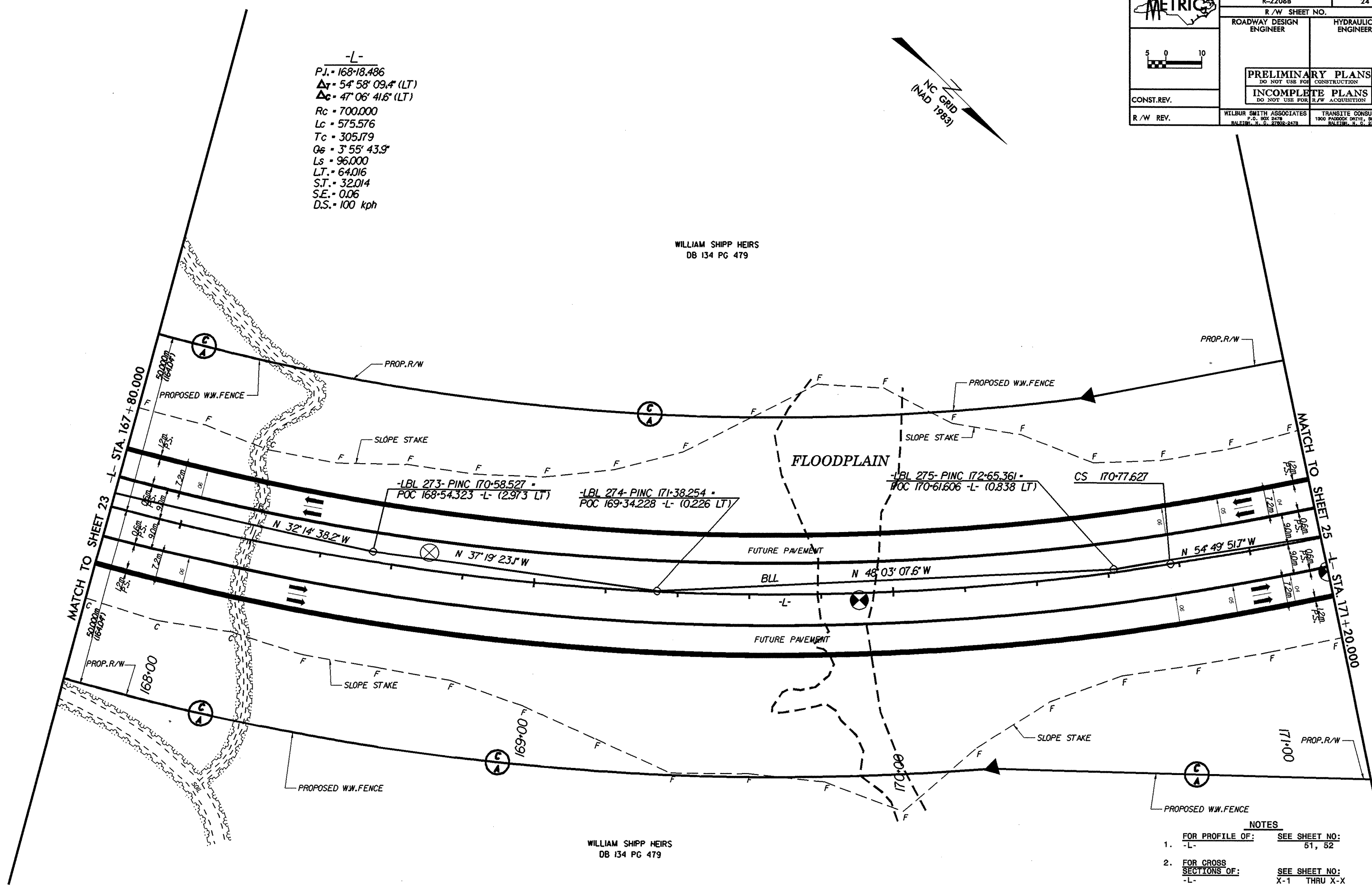
	PROJECT REFERENCE NO.	SHEET NO.
	R-2206B	24
	R/W SHEET NO.	
	ROADWAY DESIGN ENGINEER	HYDRAULICS ENGINEER
CONST.REV.	<b>PRELIMINARY PLANS</b> DO NOT USE FOR CONSTRUCTION	
	<b>INCOMPLETE PLANS</b> DO NOT USE FOR R/W ACQUISITION	
R/W REV.	WILBUR SMITH ASSOCIATES P.O. BOX 2478 RALEIGH, N. C. 27602-2478	TRANSITE CONSULTING 1900 PARKWAY DRIVE, SUITE 9-10 RALEIGH, N. C. 27609

-L-  
 P.J. = 168+18.486  
 $\Delta T = 54^{\circ} 58' 09.4''$  (LT)  
 $\Delta C = 47^{\circ} 06' 41.6''$  (LT)  
 $R_c = 700.000$   
 $L_c = 575.576$   
 $T_c = 305.179$   
 $O_s = 3^{\circ} 55' 43.9''$   
 $L_s = 96.000$   
 $L.T. = 64.016$   
 $S.T. = 32.014$   
 $S.E. = 0.06$   
 $D.S. = 100$  kph



WILLIAM SHIPP HEIRS  
 DB 134 PG 479



WILLIAM SHIPP HEIRS  
 DB 134 PG 479

- NOTES**
- FOR PROFILE OF: -L- SEE SHEET NO: 51, 52
  - FOR CROSS SECTIONS OF: -L- SEE SHEET NO: X-1 THRU X-X