

**METRIC**

PROJECT REFERENCE NO. R-2206B SHEET NO. 26

R/W SHEET NO.

ROADWAY DESIGN ENGINEER HYDRAULICS ENGINEER

**PRELIMINARY PLANS**  
DO NOT USE FOR CONSTRUCTION

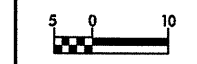
**INCOMPLETE PLANS**  
DO NOT USE FOR R/W ACQUISITION

CONST. REV.

R/W REV.

WILBUR SMITH ASSOCIATES  
P.O. BOX 2478  
RALEIGH, N. C. 27602-2478

TRANSITE CONSULTING  
1300 PADDOCK DRIVE, SUITE 9-10  
RALEIGH, N. C. 27609



MATCH TO SHEET 31 Y-10 REV. STA. 14+00.000

JOY L. BLANTON FLOYD  
LORETTA & DEANE L. SAIN  
DB 571 PG 353

-Y10-  
P.J. = 14+15.013  
 $\Delta$  = 13° 46' 28.026" (RT)  
Rc = 740.000 m  
Lc = 177.899 m  
Tc = 89.381 m

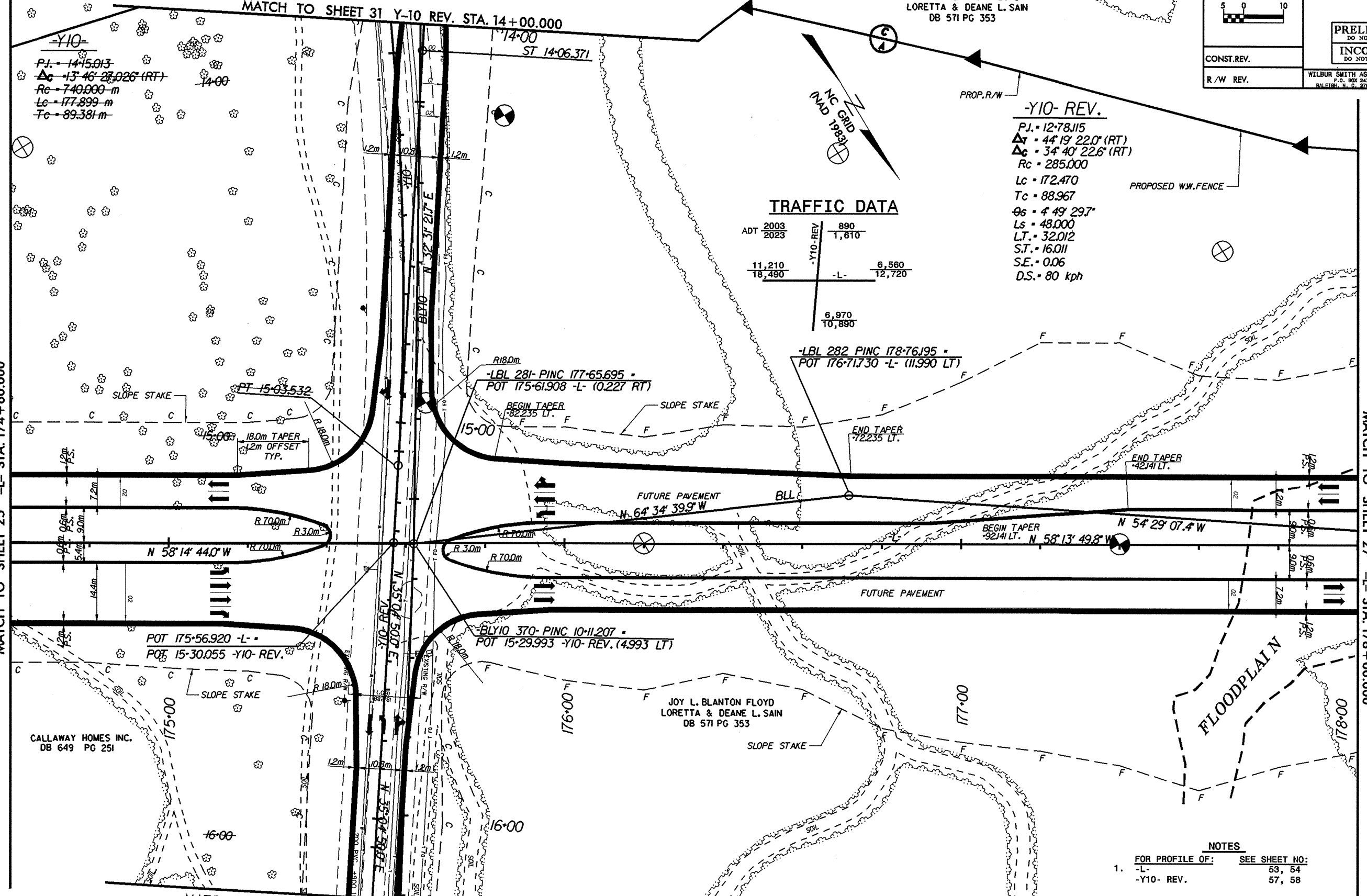
-Y10- REV.  
P.J. = 12+78.115  
 $\Delta$  = 44° 19' 22.0" (RT)  
 $\Delta$  = 34° 40' 22.6" (RT)  
Rc = 285.000  
Lc = 172.470  
Tc = 88.967  
 $\Theta$ s = 4° 49' 29.7"  
Ls = 48.000  
L.T. = 32.012  
S.T. = 16.011  
S.E. = 0.06  
D.S. = 80 kph

**TRAFFIC DATA**

ADT 2003	890
2023	1,610
11,210	6,560
18,490	12,720
	-L-
	6,970
	10,890

MATCH TO SHEET 25 -L- STA. 174+60.000

MATCH TO SHEET 27 -L- STA. 178+00.000



MATCH TO SHEET 32 Y-10 REV. STA. 16+20.000

**NOTES**

- FOR PROFILE OF: SEE SHEET NO:  
-L- 53, 54  
-Y10- REV. 57, 58
- FOR CROSS SECTIONS OF: SEE SHEET NO:  
-L- X-1 THRU X-X  
-Y10- REV. X-1 THRU X-X