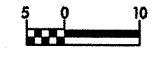
	PROJECT REFERENCE NO.	SHEET NO.
	R-2206B	28
R/W SHEET NO.		
ROADWAY DESIGN ENGINEER	HYDRAULICS ENGINEER	
<b>PRELIMINARY PLANS</b> DO NOT USE FOR CONSTRUCTION		
<b>INCOMPLETE PLANS</b> DO NOT USE FOR R/W ACQUISITION		
CONST.REV.	WILBUR SMITH ASSOCIATES P.O. BOX 2478 RALEIGH, N. C. 27602-2478	
R/W REV.	TRANSITE CONSULTING 1900 PADDOCK DRIVE, SUITE 8-10 RALEIGH, N. C. 27609	

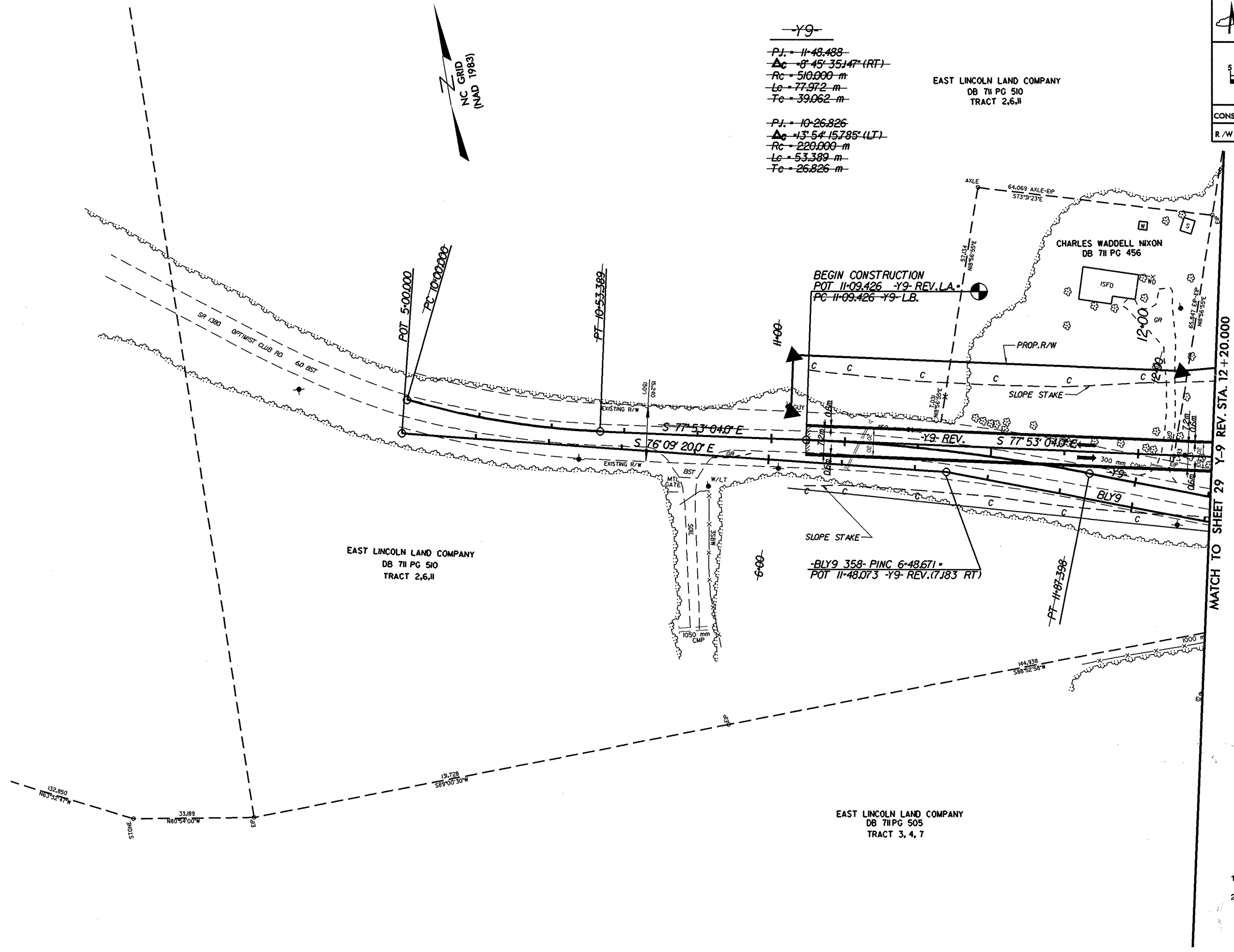


**-Y9-**  
 P.I. = 11-48.488  
 Δc = 8-45-35.147 (RT)  
 Rc = 510.000 m  
 Lc = 77.972 m  
 Tc = 39.062 m

P.I. = 10-26.826  
 Δc = 13-54-15.785 (LT)  
 Rc = 220.000 m  
 Lc = 53.389 m  
 Tc = 26.826 m

EAST LINCOLN LAND COMPANY  
 DB 711 PG 510  
 TRACT 2,6,11

NC GRID  
 (MAD 1983)



MATCH TO SHEET 29 Y-9 REV. STA. 12+20.000

- NOTES**
- FOR PROFILE OF: **-Y9- REV.** SEE SHEET NO: 55
  - FOR CROSS SECTIONS OF: **-Y9- REV.** SEE SHEET NO: X-1 THRU X-X