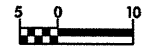
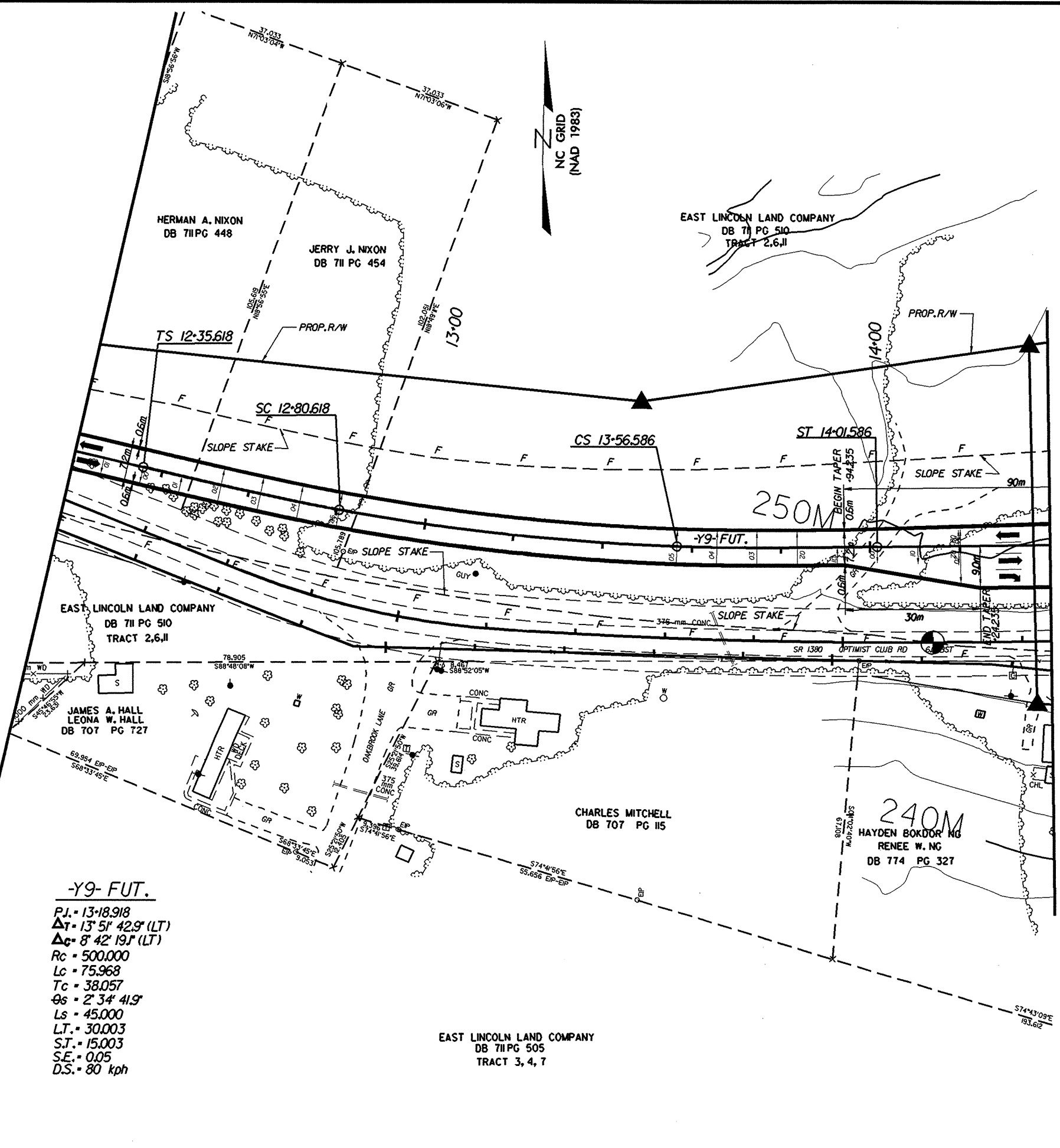
	PROJECT REFERENCE NO.	SHEET NO.
	R-2206B	37
	R / W SHEET NO.	
	ROADWAY DESIGN ENGINEER	HYDRAULICS ENGINEER
CONST. REV.	PRELIMINARY PLANS DO NOT USE FOR CONSTRUCTION	
	INCOMPLETE PLANS DO NOT USE FOR R/W ACQUISITION	
R / W REV.	WILBUR SMITH ASSOCIATES P.O. BOX 2478 RALEIGH, N. C. 27602-2478	TRANSITE CONSULTING 1900 PARKWOOD DRIVE, SUITE 9-10 RALEIGH, N. C. 27609



-Y9- FUT.
 P.I. = 13+18.918
 $\Delta T = 13^\circ 51' 42.9''$ (LT)
 $\Delta C = 8^\circ 42' 19.1''$ (LT)
 R_c = 500.000
 L_c = 75.968
 T_c = 38.057
 $\theta_s = 2^\circ 34' 41.9''$
 L_s = 45.000
 L_T = 30.003
 S.T. = 15.003
 S.E. = 0.05
 D.S. = 80 kph

EAST LINCOLN LAND COMPANY
 DB 71 PG 505
 TRACT 3, 4, 7