	PROJECT REFERENCE NO. R-2206B	SHEET NO. 40
	R/W SHEET NO.	
ROADWAY DESIGN ENGINEER	HYDRAULICS ENGINEER	
PRELIMINARY PLANS DO NOT USE FOR CONSTRUCTION		
INCOMPLETE PLANS DO NOT USE FOR R/W ACQUISITION		
CONST.REV.	WILBUR SMITH ASSOCIATES P.O. BOX 2478 RALEIGH, N. C. 27602-2478	
R/W REV.	TRANSITE CONSULTING 1300 PARKWOOD DRIVE, SUITE 9-10 RALEIGH, N. C. 27608	

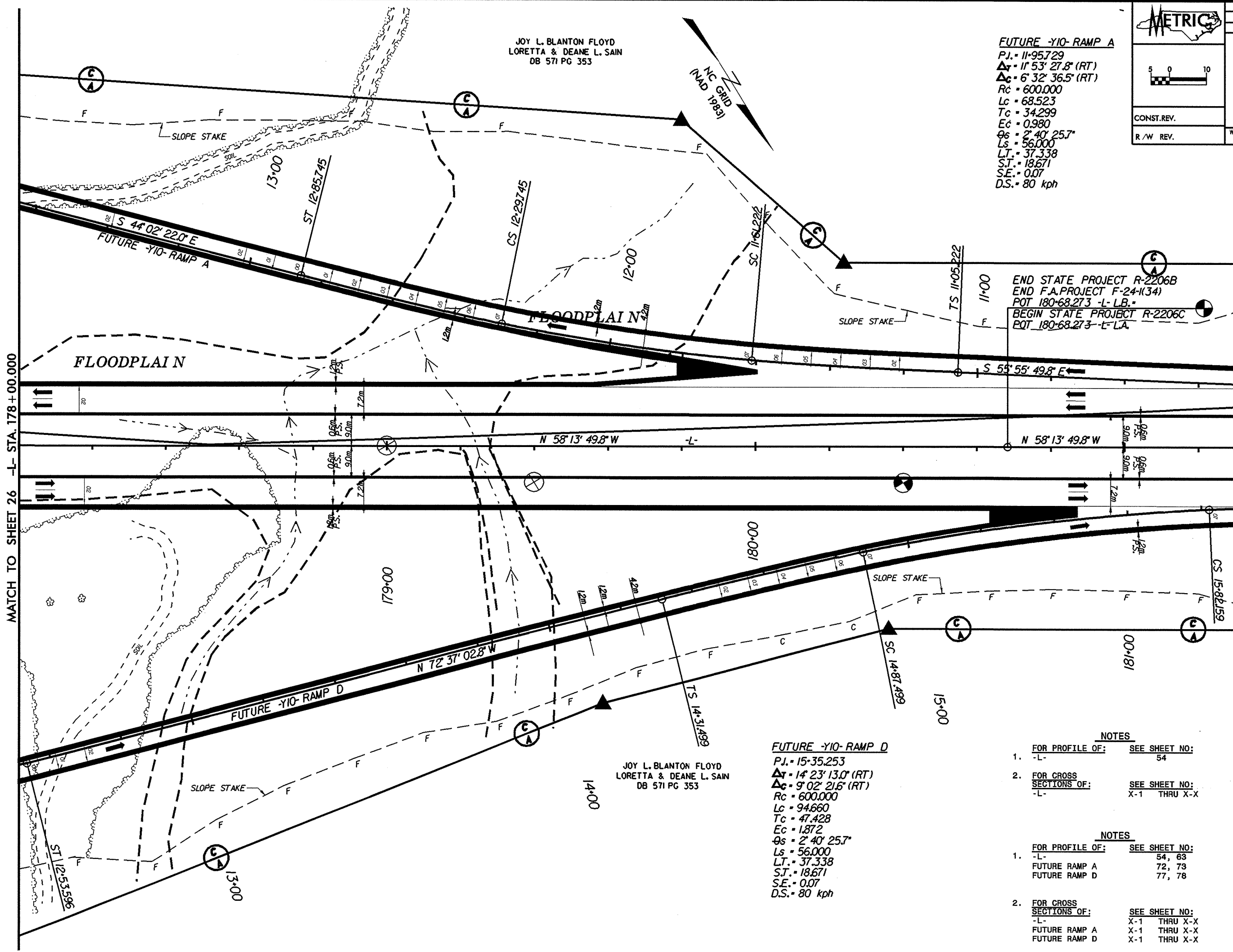
FUTURE -Y10- RAMP A
 P.I. = 11+957.29
 $\Delta T = 11' 53' 27.8''$ (RT)
 $\Delta C = 6' 32' 36.5''$ (RT)
 $R_c = 600.000$
 $L_c = 68.523$
 $T_c = 34.299$
 $E_c = 0.980$
 $\theta_s = 2' 40' 25.7''$
 $L_s = 56.000$
 $L.T. = 37.338$
 $S.T. = 18.671$
 $S.E. = 0.07$
 $D.S. = 80$ kph

END STATE PROJECT R-2206B
 END F.A. PROJECT F-24-I(34)
 POT 180+68.273 -L-LB.
 BEGIN STATE PROJECT R-2206C
 POT 180+68.273 -L-LA.

FUTURE -Y10- RAMP D
 P.I. = 15+35.253
 $\Delta T = 14' 23' 13.0''$ (RT)
 $\Delta C = 9' 02' 21.6''$ (RT)
 $R_c = 600.000$
 $L_c = 94.660$
 $T_c = 47.428$
 $E_c = 1.872$
 $\theta_s = 2' 40' 25.7''$
 $L_s = 56.000$
 $L.T. = 37.338$
 $S.T. = 18.671$
 $S.E. = 0.07$
 $D.S. = 80$ kph

- NOTES**
- FOR PROFILE OF: SEE SHEET NO:
-L- 54
 - FOR CROSS SECTIONS OF: SEE SHEET NO:
-L- X-1 THRU X-X

- NOTES**
- FOR PROFILE OF: SEE SHEET NO:
-L- 54, 63
FUTURE RAMP A 72, 73
FUTURE RAMP D 77, 78
 - FOR CROSS SECTIONS OF: SEE SHEET NO:
-L- X-1 THRU X-X
FUTURE RAMP A X-1 THRU X-X
FUTURE RAMP D X-1 THRU X-X



MATCH TO SHEET 26 -L- STA. 178+00.000

JOY L. BLANTON FLOYD
 LORETTA & DEANE L. SAIN
 DB 571 PG 353

JOY L. BLANTON FLOYD
 LORETTA & DEANE L. SAIN
 DB 571 PG 353