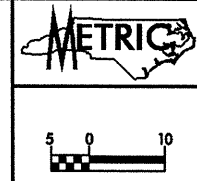
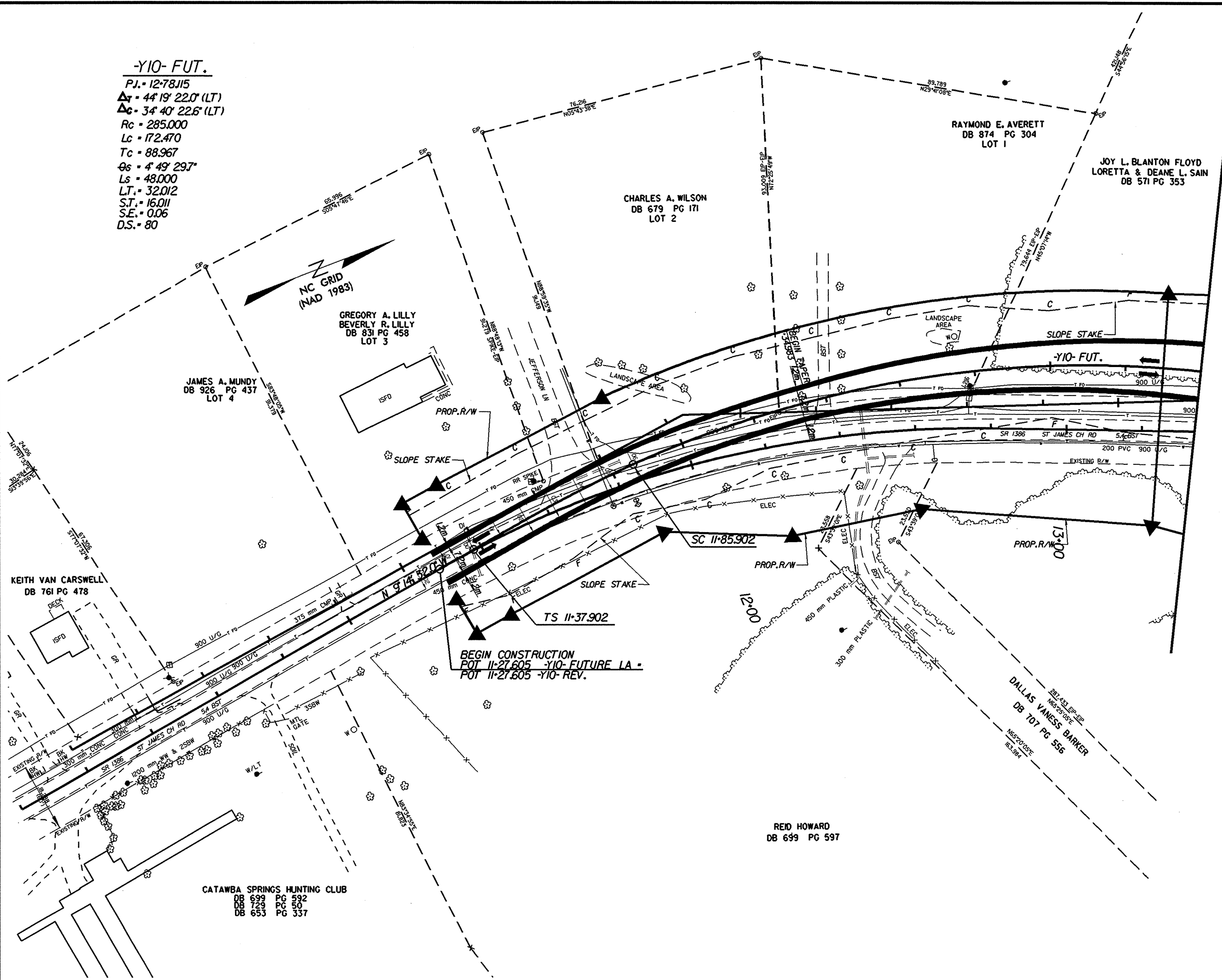


-Y10- FUT.
 P.I. = 12+78.115
 $\Delta T = 44' 19" 22.0"$ (LT)
 $\Delta C = 34' 40" 22.6"$ (LT)
 R_c = 285.000
 L_c = 172.470
 T_c = 88.967
 $\theta_s = 4' 49" 29.7"$
 L_s = 48.000
 L.T. = 32.012
 S.T. = 16.011
 S.E. = 0.06
 D.S. = 80



PROJECT REFERENCE NO. R-2206B	SHEET NO. 42
R/W SHEET NO.	
ROADWAY DESIGN ENGINEER	HYDRAULICS ENGINEER
PRELIMINARY PLANS DO NOT USE FOR CONSTRUCTION	
INCOMPLETE PLANS DO NOT USE FOR R/W ACQUISITION	
CONST. REV.	
R/W REV.	



- NOTES**
- FOR PROFILE OF: -Y10- FUT. SEE SHEET NO: 66
 - FOR CROSS SECTIONS OF: -Y10- FUT. SEE SHEET NO: X-1 THRU X-X